

NVR-B3613.37.55.230828 Release Notes

Zhejiang Uniview Technologies Co., Ltd.

NVR-B3613.37.55.230828 Release Notes

Keywords: Version information, usage notes, precautions.

Abstract: This document provides information about the **NVR-B3613.37.55.230828** board software, including version information, usage notes, precautions, and features.

Acronym

Acronym	Full Name
NVR	Network Video Recorder

Contents

- 1 Version Information..... 3**
 - 1.1 Version Number3
 - 1.2 Applied Product Models3
 - 1.3 Release History4
- 2 Usage Notes 4**
- 3 Software Features 4**
- 4 Version Change Description 5**
 - 4.1 Feature Change Description5
 - 4.2 Operation Change Description 13
- 5 Related Documents and Delivery Method..... 13**
- 6 Version Upgrade Guidance 13**
 - 6.1 Precautions..... 13
 - 6.2 Upgrade Procedure 13
 - 6.3 Upgrade Through the System Interface..... 13
 - 6.4 Upgrade Through the Web Interface..... 14

1 Version Information

1.1 Version Number

NVR-B3613.37.55.230828

1.2 Applied Product Models

Table 1 Applied Product Models

Product Models	Description
NVR502-08B-P8	2 slot, 8-ch, 8PoE interfaces , H.264/H.265 and 4K ultra HD.
NVR502-16B-P16	2slot, 16-ch, 16 PoE interfaces , H.264/H.265 and 4K ultra HD.
NVR502-32B-P16	2 slot, 32-ch, 16 PoE interfaces , H.264/H.265 and 4K ultra HD.
NVR504-16B-P16	4 slot, 16-ch, 16 PoE interfaces , H.264/H.265 and 4K ultra HD
NVR504-32B-P16	4 slot, 32-ch, 16 PoE interfaces , H.264/H.265 and 4K ultra HD,,4Alarm In/1 Alarm Out
NVR501-04B-P4	1 slot, 4-ch, 4 PoE interfaces , H.264/H.265 and 4K ultra HD.
NVR501-04B-LP4	1 slot, 4-ch, 4 PoE interfaces plastic shell NVR, H.264/H.265 and 4K ultra HD.
NVR501-08B-P8	1 slot, 8-ch, 8 PoE interfaces , H.264/H.265 and 4K ultra HD.
NVR501-08B-LP8	1 slot, 8-ch, 8 PoE interfaces plastic shell NVR , H.264/H.265 and 4K ultra HD
NVR501-04B-P4-A	1 slot, 4-ch, 4 PoE interfaces , H.264/H.265 and 4K ultra HD,,4Alarm In/1 Alarm Out
NVR501-04B	1 slot, 4-ch, H.264 and H.265, 4K ultra HD.
NVR501-08B	1 slot, 8-ch, H.264 and H.265, 4K ultra HD.
NVR501-16B	1 slot, 16-ch, H.264 and H.265, 4K ultra HD.
NVR508-16B	8 slot, 16-ch, H.264 and H.265, 4K ultra HD.
NVR508-32B	8 slot, 32-ch, H.264 and H.265, 4K ultra HD.
NVR508-64B	8 slot, 64-ch, H.264 and H.265, 4K ultra HD.
NVR504-32B	4 slot, 32-ch, H.264 and H.265, 4K ultra HD.
NVR504-16B	4 slot, 16-ch, H.264 and H.265, 4K ultra HD.
NVR502-32B	2 slot, 32-ch, H.264 and H.265, 4K ultra HD.
NVR502-16B	2 slot, 16-ch, H.264 and H.265, 4K ultra HD.
NVR502-09B	2 slot, 9-ch, H.264 and H.265, 4K ultra HD.

1.3 Release History

Table 2 Released Versions

Version No.	Basic Version No.	Released On
NVR-B3613.37.55.230828	NVR-B3613.37.54.230803	2023-08-28
NVR-B3613.37.54.230803	NVR-B3613.37.53.230712	2023-08-03
NVR-B3613.37.53.230712	NVR-B3613.37.31.230516	2023-07-12
NVR-B3613.37.31.230516	NVR-B3613.36.38.230411	2023-05-18
NVR-B3613.36.38.230411	NVR-B3613.36.33.230322	2023-04-20
NVR-B3613.36.33.230322	NVR-B3613.36.31.230214	2023-03-22
NVR-B3613.36.31.230214	NVR-B3613.36.29.230206	2023-02-14
NVR-B3613.36.29.230206	NVR-B3613.36.28.230112	2023-02-06
NVR-B3613.36.28.230112	NVR-B3613.36.26.221227	2023-01-12
NVR-B3613.36.26.221227	NVR-B3613.2.22.221209	2022-12-27
NVR-B3613.2.22.221209	NVR-B3613.2.19.221108	2022-12-09
NVR-B3613.2.19.221108	NVR-B3613.2.14.221011	2022-11-08
NVR-B3613.2.14.221011	NVR-B3613.2.13.220923	2022-10-11
NVR-B3613.2.13.220923	NVR-B3613.2.12.220823	2022-09-23
NVR-B3613.2.12.220823	NVR-B3613.1.18.220714	2022-08-23
NVR-B3613.1.18.220714	Initial release	2022-07-14

2 Usage Notes

None.

3 Software Features

Table 3 Software Features




Service	Feature
Audio and video decoding	H.264 and H.265, 4K resolution display, up to 16Mbps bit rate.
Data storage	Local storage of recordings in hard disk(s).
Web-based management	Web-based user interface for device configuration and management.

4 Version Change Description


4.1 Feature Change Description

Table 4 NVR-B3613.37.31.230516 Feature Changes

Item	Feature	Description
Newly added features	Camera-side mixed traffic detection	<p>When the connected camera is capable of mixed traffic detection, the following functions are available on the NVR: enabling/disabling detection, parameter configuration, receiving/storing images from IPC, smart preview, smart search by motor vehicle/non-motor vehicle/human body, or searching mixed traffic events, attributes/results display, uploading image with attribute information to the upper platform</p> <p>Remarks: This feature is not available for NVRs with 1 HDD slot</p>
	Camera-side traffic monitoring	<p>When the connected camera is capable of traffic monitoring, the following functions are available on the NVR: enabling/disabling monitoring, parameter configuration, receiving/storing images from IPC, smart preview, smart search by motor vehicle/non-motor vehicle/human body, or searching traffic monitoring events, attributes/results display, uploading image with attribute information to the upper platform.</p> <p>The traffic monitoring can only be enabled/disabled on the NVR but cannot be configured on the NVR. Compared with mixed-traffic detection, traffic monitoring can capture vehicles passing a tripwire in real time. Besides, lane detection and motorcycle detection are added.</p> <p>Remarks: This feature is not available for NVRs with 1 HDD slot</p>
	Improved layout of VCA search	<p>Face snapshot search and face comparison search tabs are moved to the Face Search menu (only for the local interface).</p> <p>Allows user to search images by object types on the page of motor vehicle search, non-motor vehicle search, and human body search, and search by events on the general search page.</p> <p>Deleted behavior search, and user can search behavior images on the page of motor vehicle search, non-motor vehicle search, human body search or general search.</p> <p>Deleted vehicle search, and user can search vehicle images on the page of motor vehicle search and general search.</p> <p>The improved layout enables user to search images by objects and by events.</p>
	Improved layout of smart display configuration	<p>On the local interface, the smart preview page of the local interface, event types of face, vehicle, perimeter are deleted, and user now can select object types to display their real-time snapshots based on motor vehicle, non-motor vehicle, face and human body. The smart display configuration on Smart Preview page now displays two tabs: Alarm Subscription and ShowTime Attr Config.</p> <p>The Alarm Subscription tab includes face recognition, perimeter protection, vehicle recognition, object detection, temperature detection, and behavior analysis. User can set to display images of the specified alarm types.</p> <p>The ShowTime Attr Config tab includes human body attributes, non-motor vehicle attributes and motor vehicle attributes, and user can set to display detailed attributes (only mixed-traffic detection and traffic monitoring support attribute configuration, and up to 3 items can be selected for each type of attribute).</p> <p>Remarks: The ShowTime Attr Config is not available for NVRs with 1 HDD slot</p>
	NVR supports sending an email with alarm information to the specified email address(es) when an	<p>NVR can send an email with alarm information to the specified recipient(s), avoiding frequent alarm information push to all email addresses.</p>

Item	Feature	Description
	alarm occurs.	The alarm configuration page added the Send Email item with a list showing the configured recipients' addresses. Up to 6 recipients are allowed and the chosen recipients will receive an alarm email when an alarm occurs.
	The local interface supports overlay multi-line characters on the preview page.	The OSD Content tab is added at Camera > OSD , which allows to configure custom OSD for the IPC. Up to 5 OSDs are allowed and each OSD can be enabled/disabled and named separately.
	Allows to configure arming schedule and day/night mode for IPC that supports alarm sound/light for human body detection.	For cameras that support human body detection and sound/light alarm schedules: user can configure an arming schedule for sound and light alarms. For cameras that support human body detection and sound/light day/night mode: user can select day/night mode or custom mode to configure parameters for sound and light alarms. This function requires camera support.
	NVR supports configuring alarm sound/light for auto-tracking dome cameras.	Connecting the auto-tracking dome cameras that support sound and light, user can configure alarm sound/light for auto tracking, including day/night mode, arming schedule and audio of sound, and day/night mode and blink time of light.
	Supports rapidly disarming IPC actions on NVR	On the local interface,  appears on the preview window when the NVR receives an alarm from a camera ( if it is a tampering detection alarm).  is added on the window toolbar to disarm IPC actions. This function requires camera support and is currently applicable to elevator detection alarms.
	The Web interface adds streaming management function.	Streaming management function is added on the Maintenance menu of the Web interface, including Live View and Playback tabs. User can view detailed information about live and playback streams on these tabs and stop streaming manually.
	The local interface supports displaying passwords of online IPCs.	The local interface can display camera passwords on the Camera page. The admin user can click a button (Show IPC Password) to view the passwords of online IPCs after authentication.
	A small eye icon is added on the password input pages of the local interface, and the password can be displayed in clear text by clicking the icon.	On the local interface, a small eye icon is added on all the password input pages (except on the login page). User can click this icon to view the password in clear text. The password is not displayed in clear text by default.
	Supports 16MP IPCs	NVR can connect 16MP IPCs via the Uniview protocol and realize functions including live view, playback, two-way audio, alarm and VCA. On the local interface, NVR can decode the 16MP main stream
	Supports 16K sampling rate in G.711 audio format	NVR can connect IPCs that support G.711U/G.711A audio compression and 8K/16K sampling rate. The local&Web interfaces support the configuration and audio decoding at 16K sampling rate in G.711 format.
	Optimized policy of hard disk access to the NVR	<ul style="list-style-type: none"> ● For NVR with no hard disk: If there is no hard disk, the local&Web interfaces will prompt user to add a hard disk for the NVR. User can click the setting button to view hard disk information on the local interface. ● For NVR with unformatted hard disk: If there is hard disk unformatted, a message will alert user there is unformatted disk and show its slot. User can format hard disk by clicking the setting button on the local interface and configuration button on the Web interface. <p>To close the prompt, user can click Exit on the local interface and Close</p>

Item	Feature	Description
		<p>on the Web interface, otherwise the prompt is always flashing. This event will not recorded in logs or alarms.</p>
	<p>Optimized prompt of abnormal device time</p>	<p>If there is abnormal device time, the local&Web interfaces will prompt user to replace the button battery and reset the time. User can click the setting button to reset the time on the local interface.</p>
<p>Optimized features</p>	<p>Supports magnifying the video of VCA search on the local interface</p>	<p>On the local interface, user can magnify the video of VCA search in tile mode by double-clicking the video or clicking the full-screen button on the right window. The magnified window plays the video on the left, and displays the event details and object properties on the right.</p> <p>The video cannot be magnified if the search results are shown in list mode.</p>
	<p>Optimized default alarm policy of NVR after access IPC</p>	<p>For detection switch:</p> <ul style="list-style-type: none"> ● For face detection, cross line detection, intrusion detection, enter area, leave area, ultra motion detection (UMD), elevator entrance detection and high-rise littering, their enabled/disabled status is based on IPC configuration if the IPC is connected for the first time, otherwise it is based on NVR. A prompt will be displayed if their enabled/disabled status is different on IPC and NVR. ● Motion detection is enabled/disabled based on IPC configuration if the IPC is connected via the private protocol, otherwise it is disabled by default if the IPC is connected via other protocols. ● Human body detection and people counting are enabled/disabled based on IPC configuration. ● Based on NVR configuration, video loss, audio detection and tempering detection are disabled by default. <p>For detection rules:</p> <ul style="list-style-type: none"> ● The detection rules of certain functions are based on IPC configuration, including face detection, cross line detection, intrusion detection, enter area, leave area, elevator entrance detection, high-rise littering, motion detection, audio detection, tempering detection and people counting. ● The detection rules of UMD are based on NVR configuration if the connected IPC supports motion detection, and based on IPC configuration if the connected IPC supports UMD. ● Video loss does not support detection rule configuration. <p>For arming schedule:</p> <p>Based on NVR configuration, all detection functions adopt 24/7 arming schedule by default for the first configuration. The arming schedule of perimeter protection, UMD, motion detection, human body detection, elevator entrance detection and people counting will be synced to the IPC.</p> <p>For trigger actions:</p> <p>For cross line detection, intrusion detection, enter area, leave area, UMD, elevator entrance detection, and alarm sound/light of human body detection, the trigger actions are based on IPC configuration. The trigger actions of other functions are based on NVR configuration.</p>
	<p>Improved layout of setup on the Web interface</p>	<p>The Disk menu is changed to Storage.</p> <p>Deleted the Schedule tab, and Recording Schedule and Snapshot Schedule tabs are moved to the Storage menu.</p> <p>Motion Detection, Tampering Detection, Human Body Detection, Video Loss and Audio Detection tabs are moved from the Camera menu to Alarm.</p> <p>The order of the Network Info tab on the Maintenance menu is adjusted to the first.</p>

Item	Feature	Description
	Supports copying capture mode to other camera(s)	<p>On the Encoding page, the capture mode is added on the copy page and can be copied to other camera(s).</p> <p>The cameras that connect to the NVR via the Onvif, GB28181 and custom protocol do not support this feature.</p>
	Optimized the usability of VCA functions	<ul style="list-style-type: none"> ● Optimized the prompt when the face functions are enabled/disabled. ● On the Web interface, the avatar placeholder is added to replace a blank face image on the Add Face Info page. ● When a face image is imported, the file name of the image is used as the name of the face list by default. ● Supports batch importing face images by folder, and the name of image file will be the person's name in the library by default. ● The face library supports uploading JPG/JPEG images with case-insensitive filename extensions. ● User can select one or multiple face images to copy to other face libraries. ● The Face List page displays the total number of faces in the face library and the VCA search page shows the total number of search results at the bottom. <p>Remarks: This feature is not available for NVRs with 1 HDD slot</p>
	Supports setting the validity period for license plates in the plate library	<p>NVR supports setting a validity period for license plates in the plate library.</p> <p>On the Plate List page (VCA > VCA Search > Vehicle Control > Plate List), the validity period can be configured when a plate is added or modified. The plate will be permanently valid if the validity period is not configured.</p> <p>The validity period of the plate can be only set manually on the interface, and does not support import and export.</p> <p>Remarks: This feature is only available for NVRs that support vehicle control.</p>
	Supports NVR local upgrade via EZCloud	<p>After the NVR is connected to EZCloud, user can access the Web interface of NVR from EZCloud and upgrade the NVR and the connected IPCs by uploading an upgrade package.</p> <p>Make sure that at least one hard disk is available on the NVR for local upgrade.</p>
	Optimized the showing policy of PoE cameras status	<p>If the PoE camera is unplugged or no PoE camera is connected to the NVR with PoE ports:</p> <p>The offline status of PoE cameras will not be displayed on the live view window. User can view the PoE cameras status by clicking Camera > Camera or Maintenance > System Info > Camera on the local&Web interfaces, or clicking  on the local interface.</p>
	The camera name is added in the exported people counting report	<p>The camera name is added in the exported report from the People Counting Report page of VCA search.</p>
	Adds the alarm type in the body of the alarm email	<p>The alarm type is added in the alarm-triggered email from the NVR.</p>
	The Web interface can load service without plug-in installed	<p>Supports V3.0 plug-in. The Web interface can load service even if the plug-in is not installed. User can drag the scroll bar of image parameters on the live view window to adjust the image splicing distance of binocular wide angle camera.</p> <p>Except for the multi-video live view and playback that require the plug-in, the rest functions can be used normally.</p> <p>User can normally import and export after the plug-in is installed.</p>
	An editing button overlays	<p>If the username or password input for an IPC is incorrect, the live view</p>



Item	Feature	Description
	on the preview window when the password of the camera is wrong	window will show the cause and a button, and user can click the button to modify the username or password.
	An editing button overlays on the preview window when no resource is provided for preview	If there is no resource for preview on the local interface, the live view will display a message to prompt user to adjust video parameters, and an editing button. User can click the button to decrease the resolution on the Encoding page.
	Optimized the prompt when cameras are sorted	After the cameras are sorted, a message will alert user that the recordings corresponding to the channel ID will be changed.
Deleted features	Deleted Vehicle Search and Behavior Search tabs of the VCA Search menu	See “Improved layout of VCA search” for details.
	Deleted Face Recognition , Vehicle Recognition and Perimeter tabs of Smart Display Configuration page	Face Recognition , Vehicle Recognition and Perimeter tabs are moved to the Alarm Subscription tab. See “Improved layout of smart display configuration” for details.
	Deleted Send Email under conventional actions of the Trigger Actions page	See “NVR supports sending an email with alarm information to the specified email address(es) when an alarm occurs” for details.
	Deleted the motion detection alarm icon  that overlays on the preview window of the local interface	On the local interface,  appears on the preview window when the NVR receives an alarm from a camera
	Deleted the Schedule tab of the Camera menu	Deleted the Schedule tab, please see “Improved layout of setup on the Web interface” for details.

Table 5 NVR-B3613.36.38.230411 Feature Changes

Item	Feature	Description
Newly added features		
Improved features	Optimized UMD configuration	<p>Moved UMD configuration from <VCA Config> to<Motion> Interface, and the Motion and UMD configuration pages are combined</p> <p>There are Motion and Ultra Motion modes, and only one can be turned on at the same time.</p> <p>After the front-end UMD camera is connected, NVR supports drawing areas, configures sound and light alarm linkage, and configures targets (motor vehicles, non-motor vehicles, pedestrians) in NVR side</p> <p>UMD detection is divided into front-end analysis and back-end analysis, if NVR supports back-end analysis such as (NVR302-E2-IQ), NVR Side Analysis highlighting, if the camera supports UMD analysis, Camera Side Analysis highlights after access</p> <p>UMD position in playback interface is moved from the VCA to Motion</p>
Deleted features	Deleted the UMD tab of the VCA Config menu	UMD and motion detection are merged, and can be selected as two motion detection modes. For details, please refer to “Optimized UMD configuration”.

Table 6 NVR-B3613.36.26.221227 Feature Changes

Item	Feature	Description
Newly added features	NVR508-64B-DT support switching between independent and simultaneous mode	The output mode configuration item is only displayed on 64-ch NVRs with 8 HDD slots. The default output mode is VGA and HDMI simultaneous output. When user switches to independent mode, the NVR will restart and then display different contents on different monitors, and up to 32 monitors are allowed. A message appears to prompt user for confirmation of device restart after user changes the output mode.
	Supports smart PT cameras	Supports connecting smart PT cameras, and supports functions including live view, patrol, recording storage, playback, configuration, alarm reception (motion detection, human body detection, abnormal audio detection, automatic tracking), alarm storage and searching.
	Supports monostable IPC alarm output	For camera alarm output (D>), user can set alarm duration to Custom or Maximum on the NVR. When the Custom option is enabled on the NVR, the relay mode on the camera is displayed as Monostable.
	Supports continuously track	NVR now allows user to configure continuously track for front-end IPCs. This feature is configurable only if the IPC supports auto tracking. If supported, user can select continuously track or customize tracking duration for the IPC.
	Work with IPC to lift barrier	Added the “let through” action on the Vehicle Monitoring page and can trigger the camera to lift the barrier automatically when a plate match alarm occurs. User can also lift the barrier manually on the Manual page. Remarks: This feature is only available for NVRs that support vehicle control.
	Adapted to multi-channel cameras	Supports connecting dual-channel cameras, and allows user to configure and receive alarms of motion detection, face detection and perimeter protection for multi-channel cameras, configure privacy mask, and search people counting statistics of multi-channel cameras.
	Optimized people present alarm UI	Supports counting people present for specified camera(s), reporting critical/major/minor alarms according to the number of people present, and triggering the corresponding actions if configured. (Configuration page: 1、 4 scenes are available. Allows user to set scene name, alarm thresholds, arming schedule, and alarm-triggered actions for each scene separately, and view the relevant rules while configuring channels. 2、 Allows user to choose to reset the number of people present automatically or manually. Both local and web clients support people present alarm configuration.) The people flow counting on Smart Preview page now displays real-time people flow statistics including the number of people coming in/out/more allowed/present; The normal/slightly/moderately/heavily crowded alarms are displayed with different colors. When user changes the scene on the preview page, the corresponding statistics will also be changed.
Improved features	Supports configuring alarm sound & light for IPCs that support perimeter protection. The configuration items are displayed only when the IPC supports	

	perimeter protection	alarm sound & light, including alarm sound (turn on/off, arming schedule, audio, play count), and alarm light (turn on/off, arming schedule, blink time).
	Configuring arming schedule of motion detection for IPCs	User can configure arming schedule of motion detection for IPCs on the NVR, and then IPCs report alarms according to the arming schedule.
	Optimized the display effects of smart preview and behavior search results	VCA search results: The face search results are not close-up images, but are displayed with surrounding scenes. The faces in the images are not stretched. Behavior search results: The search results for perimeter protection are not close-up images, but are displayed with surrounding scenes; user can double-click an image to maximize it. Smart preview: Face and perimeter images are not stretched; The images on the left are the same as the image details on the right. Remarks: The search results are still close-up images for NVRs with 1 HDD slot
	Improved the size limit of face library images	Allows user to upload face library images up to 4M. Remarks: This feature is only available for NVRs that support list management.
	Channel name is displayed when user selects channel on the VCA Search page	The VCA Search page on the Web client now allows user to view channel ID and channel name to quickly find the desired channel.
	Supports copying storage mode to other channels	The storage mode parameter is added on the Copy page of encoding settings, so user can copy storage mode to other channels.
	Relocated custom route configuration	Custom route configuration is moved to the Network tab on the web client.
Deleted features	Deleted the relay mode configuration item	Deleted relay mode on the Alarm Output page, so monostable and bistable cannot be selected. Custom alarm duration corresponds to monostable mode, and maximum alarm duration corresponds to bistable mode.

Table 7 NVR- B3613.2.19.221108 Feature Changes

Item	Feature	Description
Newly added features		
Improved features	SMD changed to UMD	SMD (smart motion detection) is changed to UMD(Ultra Motion Detection)
Deleted features		

Table 8 NVR-B3613.2.12.220823 Feature Changes

Item	Feature	Description
Newly added features	Adapted to IPCs that support box-dome linkage	Adapted to IPCs that support box-dome linkage. Allows user to select a linkage mode to view live videos in multi-sensor mode. <ul style="list-style-type: none"> ● Drag to zoom: The dome camera can rotate to and zoom in on the area that user specified on the image of the box camera.

		<ul style="list-style-type: none"> ● Click linkage: Click an object on the image of the box camera to rotate the dome camera to the specified object. ● Manual tracking: The dome camera can track the object that user specified on the image of the box camera. This function requires user to enable perimeter protection on the NVR side, and configure panoramic linkage on the IPC side.
	Splice distance for one-channel, dual-lens cameras	If the camera is a one-channel, dual-lens camera that supports image splicing, the Splice Distance parameter is displayed on the Live View page and the Image page on both the local and web interfaces, and user can use the slider bar to adjust the splice distance for the best splicing effects.
Improved features		
Deleted features		

Table 9 NVR-B3613.1.18.220714 Feature Changes

Item	Feature	Description
Newly added features	Supports front-end SMD	Adapted to IPCs that support SMD (smart motion detection), which can recognize object types, and distinguish motor vehicles, non-motor vehicles and pedestrians. NVR supports SMD configuration, VCA search, event playback, and storage of alarm information and snapshots.
	Supports dual-sensor IPCs	Supports connecting dual-sensor cameras and can display videos in proportional mode or wide mode (32:9 aspect ratio).
	Adapted to front-end alarm light and sound linkage of human body detection	Allows user to configure alarm sound and light for human body detection alarms, including turning on/off alarm light and sound and other configurations.
	Switching the maximum number of channels(only for non-poe)	4-channel devices can be extended to 6 channels. 8-channel devices can be extended to 10 channels.
Improved features	Supports downloading SD videos on the web and local interface	The web and local interface allow user to download videos in HD or SD mode.
	Displaying POS information on the local interface	All overseas models support POS function. POS control center can access NVR via network, and the NVR can store data and overlay transaction data on live view and playback images.
	Added detection area for front-end tripwire people counting	Supports drawing a detection area for tripwire people counting.
	Added day/night mode under alarm sound & light configuration in perimeter protection	Day/night mode is added under the alarm sound & light configuration of perimeter protection. The configuration item is displayed if it is supported by the IPC.
	Optimized alarm sound and light linkage	Allows users to configure alarm sound and light of IPCs on the NVR, including arming schedule and action mechanisms. It meets the needs of users for alarm sound and light linkage in different

		time periods. (Users can configure alarm sound & light in the Trigger Actions page. The configurable parameters include start time, end time, audio, repeat, alarm light, blink time, brightness, etc.)
	Configurable audio storage	Allows users to enable/disable audio storage of each camera separately.
Deleted features		

4.2 Operation Change Description

None

5 Related Documents and Delivery Method

Table 10 Related Document List

Manual Name	Manual Version	Delivery
Network Video Recorders Quick Guide	V1.00	Deliver with device.

6 Version Upgrade Guidance

6.1 Precautions

- This software system includes a software program mirror (Program.bin). Before you start upgrade, please back up configuration data through the system or Web interface in case the upgrade fails.
- Maintain proper network connection and power supply during the upgrade.

6.2 Upgrade Procedure

The version can be upgraded through the system interface and the Web interface, both support cloud upgrade.

6.3 Upgrade Through the System Interface

The system interface provides two options for upgrading the system software: local upgrade using a USB drive and cloud upgrade.

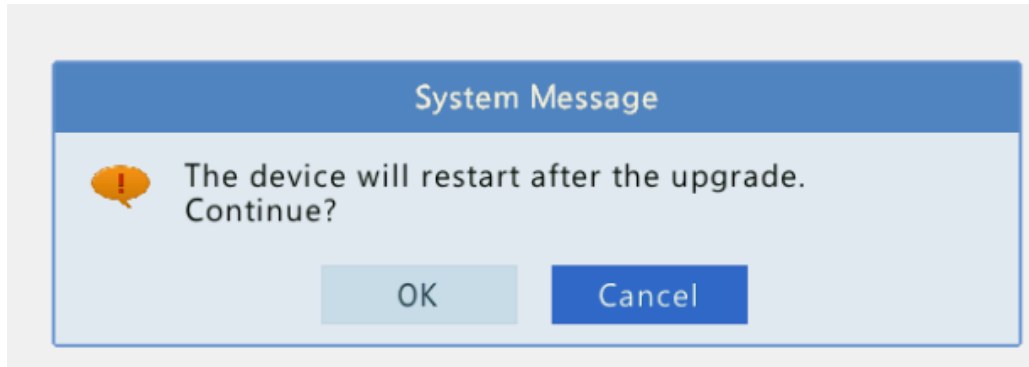
1. Local upgrade

Before you start, copy the correct upgrade file to the root directory of the USB drive.

- (1) Plug the USB drive into the USB interface on the NVR.
- (2) Log in to the system interface as "admin".

- (3) Click **Maintain > Upgrade**.
- (4) Click **Upgrade**, select the upgrade file from the drop-down list, and then click **Upgrade**. A prompt message appears.
- (5) Click **OK**.

Figure 1 Prompt Message



- (6) The NVR will restart automatically when the upgrade is completed.

2. Cloud upgrade

Before you start, check that the NVR is correctly connected to the public network.

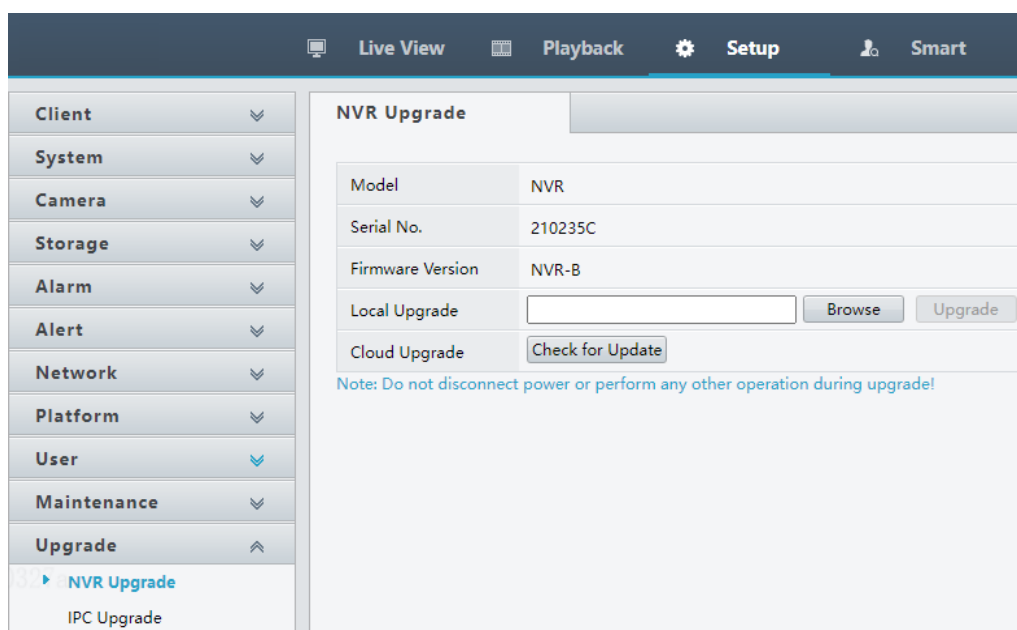
- (1) Click **Maintain > Upgrade**, and then click **Check** to check for the latest version.
- (2) Click **Upgrade** after a newer version is detected.

6.4 Upgrade Through the Web Interface

Perform the following steps to upgrade through the Web interface:

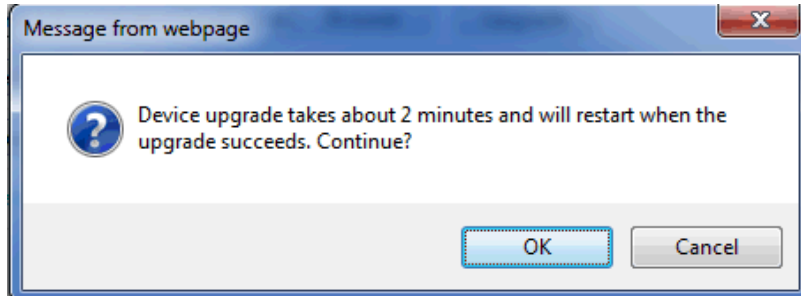
- (1) Log in to the Web interface as “admin”.
- (2) Click **Upgrade > NVR Upgrade**

Figure 2 NVR Update



- (3) Click **Browse** right to the **Upgrade** field, select the **Program.bin** file to upgrade, and then click **Upgrade**.
- (4) If the NVR is connected to the public network, you may also click **Check** to perform a cloud upgrade. If a newer version is detected, a prompt message will appear. Click **OK** to start upgrade.

Figure 3 Prompt Message



- (5) The NVR will restart automatically when the upgrade is completed.

Version Upgrade Disclaimer

1. By setting or installing this program in any way you agree to all of the following terms and conditions. Your downloading or using the program means you acknowledge your full understanding and acceptance of the following terms and conditions. If you do not agree to any of the following terms, you shall not use the program and you must cease installing and delete the program immediately.
2. The upgrade program is only applicable to the intended regions and product models. Before upgrade or update, please read the release notes carefully to make sure the program is applicable to your region and product model. You will be fully liable and responsible for all the consequences of device abnormality and related maintenance costs caused by your improper operations.
3. Uniview owns or is legally authorized to own all rights and IPRs (Intellectual Property Rights) of the program and the supplied release notes.
4. Software upgrades are for the optimization of product functions and do not mean there is defect.

5. You must strictly follow instructions in the release notes during the upgrade process, otherwise you are responsible for the possible consequences and related maintenance costs.
6. You shall not engage in any of the following activities, otherwise you would be liable for infringement and responsible for any adverse consequences arising therefrom.
 - 6.1 Copy the program (exclude the reasonable and necessary copies for internal backups);
 - 6.2 Exclude this statement when using the program or transfer the program to any third party;
 - 6.3 Modify the program or its derivatives;
 - 6.4 Reverse engineer, decompile or disassemble this program.
7. The program is only intended for authorized users. Its architecture, organization and source code are valuable trade secrets and confidential information owned by Uniview and its authorized parties. You agree not to provide or disclose any confidential information contained in or derived from the software to any third party. No part of this document may be excerpted, reproduced, or distributed in any form by any entity or individual without written consent from our company.