

Smart Management Box

SMBOX01 Series



Features

- Integrated design, combining the SMSERVER, smart power management module, power supply switch, heater, fan, and warning light into one. Most IPC and IP Speaker models can be installed on the smart management box.
- Users can remotely monitor the working status of the smart management box and its loaded devices and receive alarm notifications via mobile app and EZCloud.
- Supports automatic restart of output port. When the smart management box detects a network disconnection, it will automatically power down the network devices and restart them.
- Supports manual restart of output port. If devices such as IPC or IP Speaker are faulty, users can manually restart the power supply output port via mobile app and EZCloud.
- Equipped with surge protector, circuit breaker, and software protection function, forming a three-layer protection mechanism to effectively resist risks such as lightning, short circuit, overvoltage, and overcurrent.
- Integrated design eliminates the need for manual wiring, simplifying installation for users.

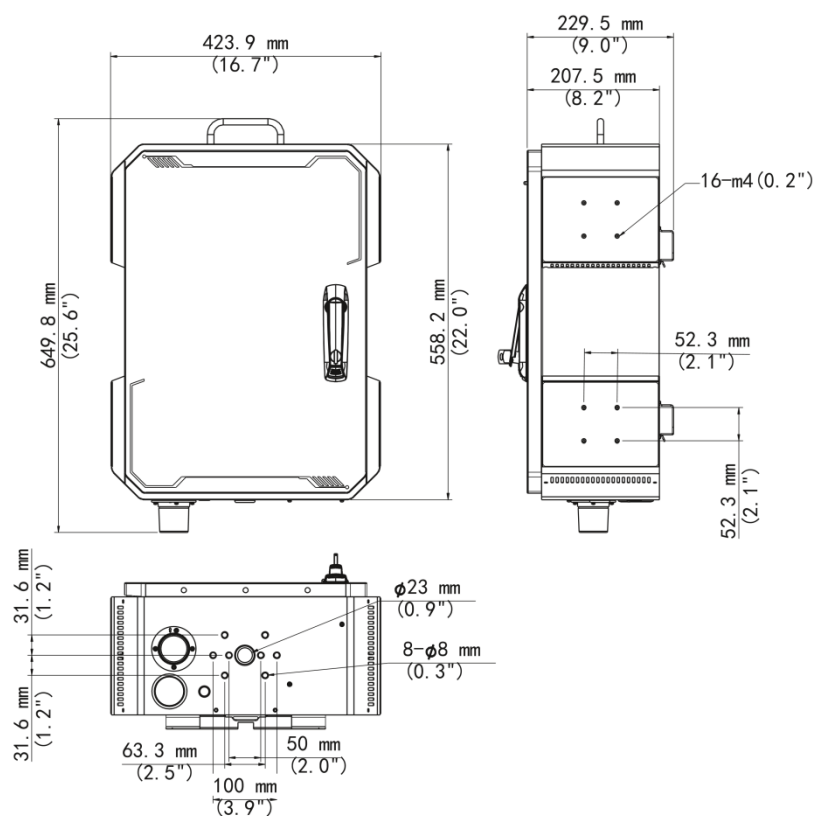
Specifications

| Model | SMBOX01-R-US | SMBOX01-R-EU |
|--------------|--|--------------------|
| Power Input | | |
| Input Type | AC 100 V to 240 V | |
| Input Port | 3-pin Connector, For the final installation, a UL 489-certified, 20-ampere circuit breaker must be installed at the front end. | |
| Power Output | | |
| Socket | 1-ch 5A, US socket | 1-ch 5A, EU socket |
| DC 12V | 1-ch 2.5A, DC5521, Used for powering the router | |
| PoE | 8 RJ45 10M/100M self adaptive Ethernet Interface | |

| | |
|--|---|
| PoE Power | Max 30 W for single port, Max 75 W in total |
| PoE Standard | IEEE 802.3at, IEEE 802.3af |
| Dedicated Power Interface (Pre-Wired Internal Cabling) | |
| Fan Power Interface | DC12V, 2.5A |
| Heater Power Interface | AC 100 ~ 240V to DC 12V, 8A |
| NVR Power Interface | AC 100 ~ 240V to DC 48V, 2.3A |
| Router Power Interface | DC12V, 2.5A |
| Warning Light Power Interface | DC12V, 2.5A |
| Function | |
| System Functional Description | Overvoltage and Overload Protection,Power Information Collection,Power Switch Detection,Power Switch Control,Thermostatic Fan,Thermostatic Heater,Automatic Network Restart,Door Open Detection,Warning Light,Fault Reporting and Analysis |
| SMSERVER | |
| Decoding Format | Ultra 265, H.265, H.264 |
| Decoding Capability | Smart Off: 2 x 16MP@30, 2 x 12MP@30, 4 x 4K@30, 8 x 4MP@30 Smart On: 2 x 12MP@30, 2 x 4K@30, 6 x 4MP@30, 8 x 3MP@30 |
| Audio Compression | G.711A, G.711U |
| Bandwidth | 80 Mbps |
| Protocols | TCP/IP, P2P, NTP, DHCP, PPPoE, HTTP, HTTPS, DNS, DDNS, SNMP, SMTP, RTSP, IPv6, IPv4 |
| IP Video Input | 8-ch |
| FTP/Schedule/Event Snapshot | 4-ch snapshot (max. 8 MP (3840 × 2160) video resolution, with 1080P snapshot resolution) |
| Recording Resolution | 16 MP/12 MP/8 MP/6 MP/5 MP/4 MP/3 MP/1080P/960P/720P/D1/2CIF/CIF |
| Smart by IPC | Face Detection,Face Comparison,Vehicle Detection,SIP (Intrusion Detection, Cross Line Detection, Enter Area, Leave Area),Ultra Motion Detection (UMD),Temperature Detection (Fire Detection, Smoking Detection, Temperature Measurement, Smoke and Fire Detection),People Counting (People Flow Counting, Crowd Density Monitoring),Video Metadata,Traffic Monitoring |
| Smart by SMBOX | Face Detection,Face Comparison,Ultra Motion Detection (UMD),Smart Intrusion Prevention (SIP) |
| VCA Search | Face Snapshot Search, Face Comparison Search, Motor Vehicle Search, Non-Motor Vehicle Search, Human Body Search, General Search, People Counting Report, Heat Map, SmartSearch+, AcuSearch |
| by SMBOX with face detection cameras | 8-ch |
| by SMBOX with normal cameras | 2-ch |
| Vehicle Picture Library | Up to 5 vehicle picture libraries, with up to 25,000 vehicle pictures in total |
| SIP by SMBOX | 4-ch |
| UMD by SMBOX | 8-ch |
| Capacity of Snapshot Records | 500 thousand records for face snapshot, One and a half millions records for SIP and vehicle |
| General Alarm | Defocus Detection, Scene Change Detection, Object Left Behind, Object Removed, Auto Tracking, Motion Detection, Tampering, Human Body Detection, Video Loss, Alarm Input, Audio Detection |

| | |
|-----------------------------------|---|
| Alert Alarm | IP Conflict, Network Disconnected, Disk Offline, Disk Abnormal, Illegal Access, Hard Disk Space Low, Hard Disk Full, Recording/Snapshot Abnormal, Array Damaged, Array Degraded |
| Network Interface | 1 RJ45 10 M/100 M/1000 M self-adaptive Ethernet Interface |
| USB | 1 × USB2.0, 1 × USB3.0 |
| ONVIF | Support |
| Hard Disk | |
| Hard Disk | 1 x SATA interface, up to 16TB HDD (2.5" or 3.5"), or up to 4TB SSD (2.5") |
| Power Lightning Protector | |
| Maximum discharge current | 40 kA |
| Rated discharge current | 20 kA |
| Response time | L-PE ≤ 25 ns, N-PE ≤ 25 ns |
| General | |
| Surge Protection | 6 kV |
| Working Temperature | When using HDDs: -40 °C to 60 °C (-40 °F to 140 °F); When using SSDs: -40 °C to 70 °C (-40 °F to 158 °F) |
| Working Humidity | ≤ 90% RH (non condensing) |
| Weight (Without Camera) | ≤ 16 kg (35.27 lb) |
| Dimensions | 650 (H) × 424 (W) × 230 (D) mm |
| Slot dimensions | The space has a depth of 55mm and a width of 190mm for installing a 4G router, Select a 4G router with DC 12V round plug power supply, total power consumption not exceeding 30W, and at least 3 LAN ports. |
| Rating | IP56 |
| Certification | CE-EMC, FCC |
| Consumption | |
| No-load power consumption | At ambient temperature of 25°C: 13.7 W (No HDD, No HDD heating, No Heater, No Fan, No Alarm Light) |
| Full-load power consumption | At ambient temperature of 25°C: 247.2 W (16T HDD, HDD Heating, Heater, Full POE Output (75W), Fan, Alarm Light) |
| SMSERVER power consumption | At ambient temperature of 25°C: ≤8W (No HDD+ No POE Output) 96.5W (Full POE Output + 16T HDD) 122.2W (Full POE Output + 16T HDD + Heating Film) |
| Adaptable Mounting Bracket | |
| Left side | Up to 2 units can be installed, supporting TR-JB07/WM03-F-IN-V2, TR-JB07/WM03-G-IN-V2, TR-JB07/WM03-H-IN-V2, TR-JB07/WM04-B-IN-V2, TR-JB05-B-IN or TR-JB07-D-IN-V2 |
| Right side | Up to 2 units can be installed, supporting TR-JB07/WM03-F-IN-V2, TR-JB07/WM03-G-IN-V2, TR-JB07/WM03-H-IN-V2, TR-JB07/WM04-B-IN-V2, TR-JB05-B-IN or TR-JB07-D-IN-V2 |
| Bottom | Up to 1 unit can be installed, which cannot be installed simultaneously with the IP Speaker and supports TR-UF45-A-IN (Only 4-inch PTZ) |
| Top | Support the installation of an IP speaker, no mounting bracket required. |

Dimensions



Zhejiang Uniview Technologies Co., Ltd.



<http://www.uniview.com>



overseasbusiness@uniview.com; globalsupport@uniview.com



No. 369, Xietong Road, Xixing Sub-district, Binjiang District, Hangzhou City, 310051, Zhejiang Province, China
(Zhejiang) Pilot Free Trade Zone, China



©2023-2025 Zhejiang Uniview Technologies Co., Ltd. All rights reserved.

*Product specifications and availability are subject to change without notice.

*Despite our best efforts, technical or typographical errors may exist in this document.