

# UNV VMS-B800-A Datasheet\_V1.3-EN

## VMS-B800-A



## Overview

VMS-B800-A is a powerful and highly reliable video surveillance management platform that offers a comprehensive solution with other Uniview products including IPC, NVR, decoder, network keyboard, IP SAN, etc. It is compatible with Onvif-compliant IP cameras and open to integration with other systems. VMS-B800-A is one of the ideal video management servers specialized for large-scale surveillance, and it has been widely used in various scenarios such as , finance, transportation, electric power, energy, education, and healthcare, and in diverse scenarios including large parks and buildings.

## Features

- Stability: Linux OS, 1+1 hot standby for master server, and N+M protection for storage server
- Flexible deployment: support distributed and hierarchical network structure
- Compatible and open: connection of third-party IP cameras with standard ONVIF and RTSP, integration with alarm control and access control; SDK for integration with other systems
- Powerful connection: up to 2,000 devices or 10,000 channels by single server, up to 30,000 channels in distributed or hierarchical network structure
- Unified management: IPC, NVR, decoder, network keyboard, cloud device, alarm control panel and door access controller
- Reliable and cost-effective storage with IP SAN
- Multiple ways to access: Web client for configuration and management, Software client for daily monitoring, mobile client (iOS and Android) for access anytime, anywhere
- Rich functionality: live view, playback, sequence, video wall, GIS map, two-way audio and broadcast, people counting, real-time alarm and alarm management, user and permission management
- VCA support: receive VCA alarms, configure alarm-triggered actions, and real-time people counting and statistics report
- Secure protection: HTTPS, 802.1x authentication, ARP protection, secure password policy, and IP address filtering
- Reliability: network fault tolerance, multi-IP configuration, load balancing, Automatic Network Replenishment (ANR)
- Operation and maintenance: Provide a comprehensive management dashboard, server status, device/channel online/offline

status, HDD status, online users, bandwidth usage, packet loss rate, log query

## Specifications

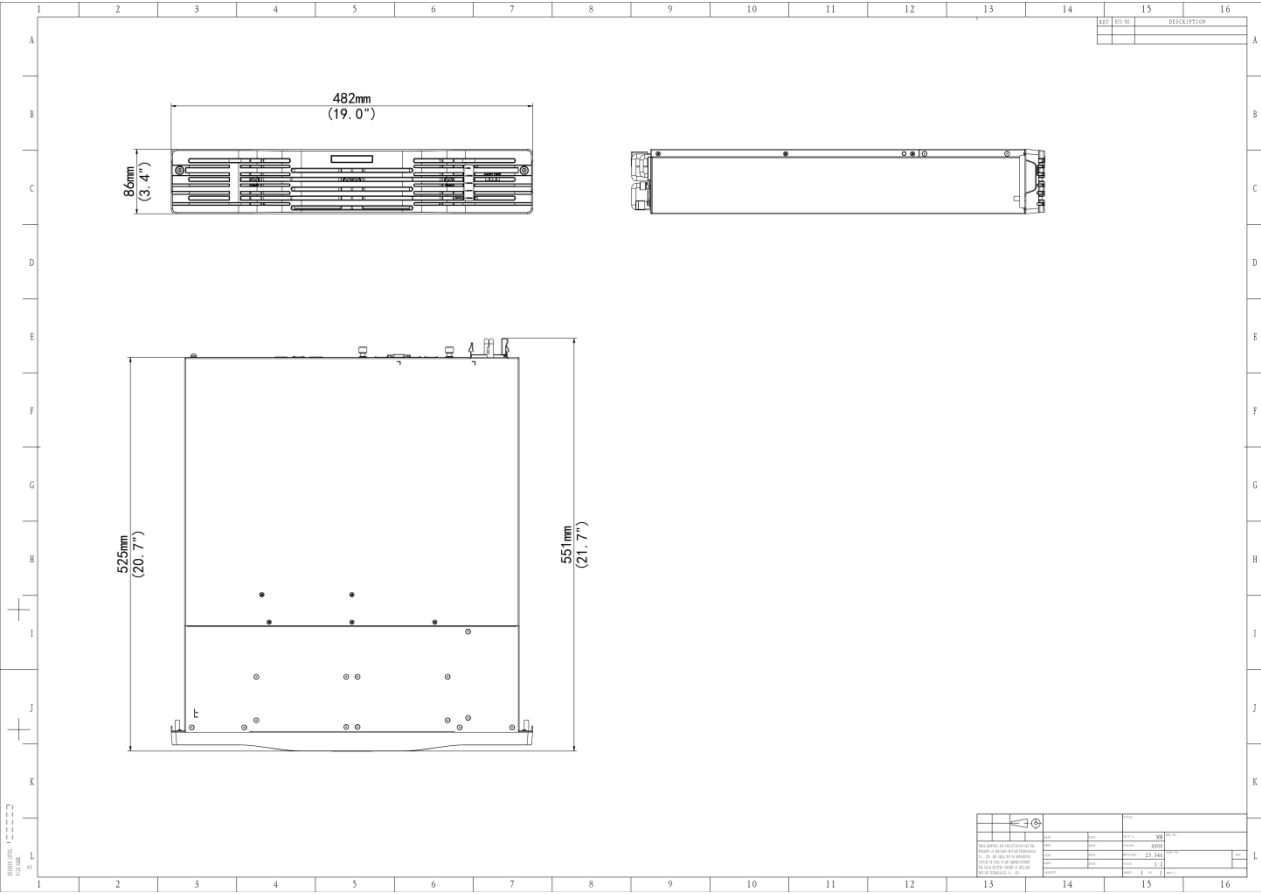
Model	VMS-B800-A
Live view	
Live view	<p>Play live video by channel or view.</p> <p>1/3/4/5/6/7/8/9/10/13/16/17/25/32/36/64 image display on single screen.</p> <p>Custom window layout.</p> <p>3/7 window layout in corridor mode.</p> <p>Max 3 auxiliary screens.</p> <p>Save settings as a view for quick restoration.</p>
Playback	
Playback	<p>Play recordings saved on VMS or NVR.</p> <p>Playback types: normal recording, tagged recording, locked recording, smart recording playback, event recording, VCA recording.</p> <p>Normal recording playback supports 1/3/4/5/6/7/8/9/10/13/16 window layout.</p> <p>Max 16-channel synchronous playback on a single client (depending on NVR's stream output performance).</p> <p>Playback speeds: -256x, -128x, -64x, -32x, -16x, -8x, -4x, -2x, -1x, 1/4x, 1/2x, 1x, 2x, 4x, 8x, 16x, 32x, 64x, 128x, 256x (depending on NVR's stream output performance)</p> <p>Supports snapshot, digital zoom, clip, audio control, lock, tag, rewind/forward 30s, zoom in/out on timeline, playback by frame, synchronous playback, image preview on timeline.</p> <p>Recording download: download recording by file, time, download tagged recording and locked recording.</p>
E-map	
E-map	<p>Supports local and online GIS (Google) maps; map files support jpg, png, and bmp formats.</p> <p>Add, delete, edit, and search maps, hot spots (video channel, alarm input, access control) and hot zones.</p> <p>Allows user to choose or customize hot spot icons.</p> <p>Live view (max 4 channels) and playback (max 16 channels) on map.</p> <p>Blinking alarm on map; view/clear alarms.</p> <p>800MB storage space for map resources, max 7 layers of maps.</p>
Video wall	
Video wall	<p>Supports multiple models of decoding devices to create video wall.</p> <p>Allows user to add, delete, edit, search video wall; editable information includes video wall name, size, resolution, bind/unbind decoding channels.</p> <p>Live view, playback, and sequence display on video wall.</p> <p>Save settings as a scene for quick restoration of settings when needed.</p> <p>Play signal source on video wall, virtual LED configuration, screen on/off control.</p>
Alarm configuration	
Alarm management	<p>Alarm subscription, alarm level customization, alarm time template, email contacts management (BS client).</p> <p>Alarm plan configuration: add/delete/edit/search/enable/disable alarm plan; configure alarm</p>

	<p>linkage actions: live view, goto preset, alarm output, alarm to video wall (BS client also supports email and buzzer).</p> <p>Alarm records search: realtime alarm records, history alarm records; history alarm records support search by alarm source, time, alarm status, alarm time, alarm level.</p>
<b>Audio</b>	
Two-way audio	<p>Choose a device for two-way audio.</p> <p>The live video from the device is displayed.</p> <p>User can start/stop two-way audio, adjust sound volume of MIC and speaker.</p> <p>The status bar shows two-way audio status.</p> <p>(Not available on the local client)</p>
Broadcast	<p>Add, delete broadcast group members, start/stop broadcast.</p> <p>Choose one audio channel from the broadcast group to play audio.</p> <p>Adjust local input and output sound volume.</p> <p>(Not available on the local client)</p>
<b>O and M statistics</b>	
Log search	View, acknowledge alarm logs, view operation logs
<b>Storage performance</b>	
Storage performance	Not support
<b>Management performance</b>	
Total device management capability	2000
Total channel management capability	10000
Cloud device management capability	500
GB/T28181 device management capability	100
Onvif device management capability	2000
Smart encoding device management capability	Not support
Access control device management capability	Not support
Decoding device management capability	50
EZAgent management capability	32
Network keyboard management capability	50
Security gateway device management capability	Not support
User management capability	1000
Concurrent online user	500

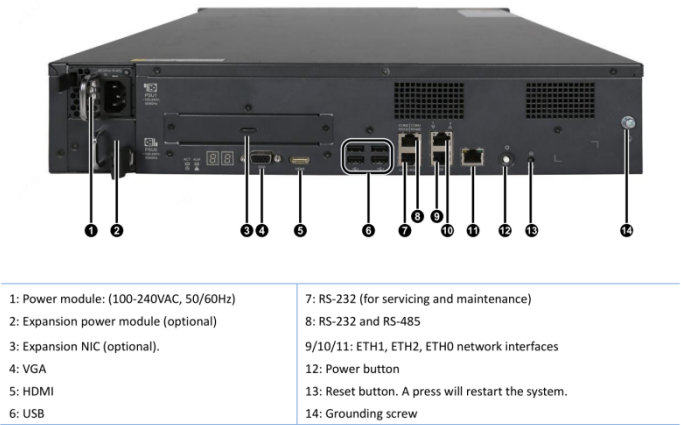
management capability	(max 64 remote online users (connected via P2P, including but not limited to online users on mobile clients))
Replica server management capability	20 (if replica servers $\geq$ 4, the primary server only engages in management).
Stream performance	
Incoming bandwidth	1024Mbps
Outgoing bandwidth	1024Mbps
Storage stream bandwidth	Not support
Alarm performance	
Alarm receiving and forwarding performance	300 alarms per second
Central decoding capability	
Decoding resolution	12 MP/8 MP/6 MP/5 MP/4 MP/3 MP/1080P/960P/720P/960H/D1/2CIF/CIF/QCIF
Built-in decoding output	Not support
Data storage performance	
Max storage for alarm logs	20W
Max storage for operation logs	20W
Operating temperature	
Operating environment temperature	0°C to 40°C (recommended: 10°C to 35°C)
Operating humidity	
Operating environment humidity	20RH% to 80RH% (noncondensing)
Operating system	
Operating system	CentOS 7.3, 64-bit
RAM	
RAM	8GB*2
HDD	
HDD	1x4TB HDD is included at delivery
Interface	
USB	4*USB3.0
VGA interface	1
HDMI interface	1
RS485	1
RS232	1
Alarm	None
Storage expansion interface	None
Network interface	
Network interface	GE × 3
Power	
12V DC output	None
Primary power input	Standard: 1 power module, optional: dual power modules, hot-pluggable
Power	100V to 240V AC input, 50Hz/60Hz

Expansion power module slot (PSU1)	Standard: 1 x 300W power module, expansion: 1+1 redundancy
Total power consumption	
Total power consumption	Max. 150W
Physical size	
Dimensions (with front panel) (H x D x W)	86.1mm×547.5mm×481.6mm/2U (remove front panel for HDD installation)
Weight	
Weight	Standard: ≤12kg; max: ≤14kg
Client computer requirements	
Client computer requirements	<p>64-bit version:</p> <p>OS: Microsoft Windows 7/Windows 8/Windows 10, 64-bit</p> <p>CPU: Intel Core i5 3.1 GHz or higher</p> <p>RAM: 4GB or higher</p> <p>32-bit version:</p> <p>OS: Microsoft Windows 7/Windows 8/Windows10, 32/64-bit</p> <p>CPU: Intel Pentium IV 3.0 GHz or higher, 4 Cores, 3.0GHz is recommended</p> <p>RAM: 2GB or higher</p> <p>Note: 64-bit operating system needs to be compatible with the 32-bit version software</p> <p>Mac version:</p> <p>OS: Mac OS 10.11 or higher</p> <p>CPU: Intel Core i5 3.1 GHz or higher</p> <p>RAM: 4GB or higher</p>

# Dimensions



# Rear Panel



# Unlimited New View

## Zhejiang Uniview Technologies Co., Ltd.



<http://www.uniview.com>



[overseasbusiness@uniview.com](mailto:overseasbusiness@uniview.com); [globalsupport@uniview.com](mailto:globalsupport@uniview.com)



No. 369, Xietong Road, Xixing Sub-district, Binjiang District, Hangzhou City, 310051, Zhejiang Province, China



©2023-2025 Zhejiang Uniview Technologies Co., Ltd. All rights reserved.

\*Product specifications and availability are subject to change without notice.

\*Despite our best efforts, technical or typographical errors may exist in this document.

Uniview cannot be held responsible for any such errors and reserves the right to change the contents of this document without prior notice.