

Outdoor High-performance Bridge WLN-EB5N-IN



Features

- Supports 802.11a/n standard
- The highest transmission rate is 90Mbps
- Outdoor transmission distance: 0~1.5km
- Integrated antenna, quick installation
- Shipped in pairs, no configuration required
- Built-in VTrans technology, including
 - 1) TDMA: eliminate the performance degradation caused by hidden terminals and maximize the wireless transmission efficiency
 - 2) Frequency (channel) expansion function: eliminate interference caused by the same frequency and adjacent frequency through more frequency selection
 - 3) Band width selection: by adjusting the channel width, the overlapping parts of spectrum can be avoided and the influence of interference by other channels can be reduced
 - 4) AutoAck function: intelligently calculate the ACK value required for long-distance transmission to achieve the optimal performance at this distance
- Supports bridge and router modes. Network architecture can be flexibly deployed by adjusting the network mode of devices
- Intelligent QoS wireless multimedia optimization technology, providing high priority transmission levels for voice and video
- Supports web page management, making installation and maintenance of equipment more convenient
- IP65

Specifications

| Model | WLN-EB5N-IN |
|----------|---------------|
| Hardware | Specification |

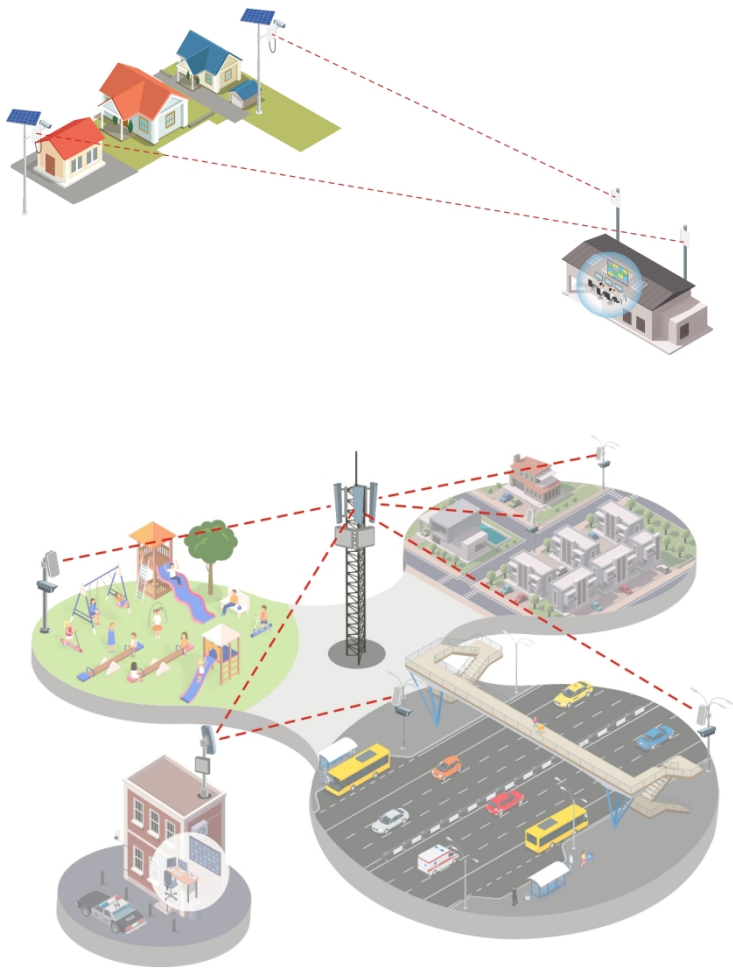
| | |
|------------------------------|--|
| Dimensions(mm) | 140x93x43mm |
| Weight(kg) | 0.19kg |
| Installation | Pole mounting, Diameter≤55mm |
| Protection Level | IP65 |
| Antenna Gain | 12dBi |
| Beam Width | H: 35°, V: 35° |
| Max Power Consumption(W) | 6W |
| Average Power Consumption(W) | 4W |
| CPU | AR9344 |
| DDR \ Memory | 64MB DDR2, 8MB Flash |
| Physical Interface | 2*10/100Mbps |
| Indicator Light | 1*Power Indicator, 1*WLAN Indicator,1*LAN Indicator,3* Signal strength indicator |
| Maximum Transmitted Power | 24dBm |
| Working Temperature | -40°C~65°C |
| Working Humidity | 5%~95%RH Non-condensing |
| Surge | POE/GE: CM 2KV , DM 1KV |
| ESD Protection | Contact 6KV , Air 8KV |
| Wind Survivability | 134km/h |
| Hardware Specification | |
| Power Supply | 12V Passive POE |
| Storage Temperature | -40°C~85°C |
| Software Specification | |
| Protocol | 802.11a/n |
| Frequency | 5180~5320MHz, 5745~5825MHz (China), 5180~5320MHz, 5500~5720MHz, 5745~5825MHz (United States),5160~5340MHz, 5480~5720MHz, 5745~5865MHz (India),5160~5340MHz, 5480~5720MHz, 5745~5825MHz (United Arab Emirates),5745~5805MHz (Indonesia),Supported frequency range: 4920~6100MHz (should depend on the local regulation),* The above frequencies need specific version support |
| Operating Mode | Station, WDS Station |
| Network Mode | Bridge/ Router |
| Management | Support Web/AC/SNMP |
| Other | Timed restart, Support VLAN, QoS, Watchdog |
| Software Specification | |
| Security | WPA2-PSK, Hidden SSID, IP/MAC Filtering |

RF Specification

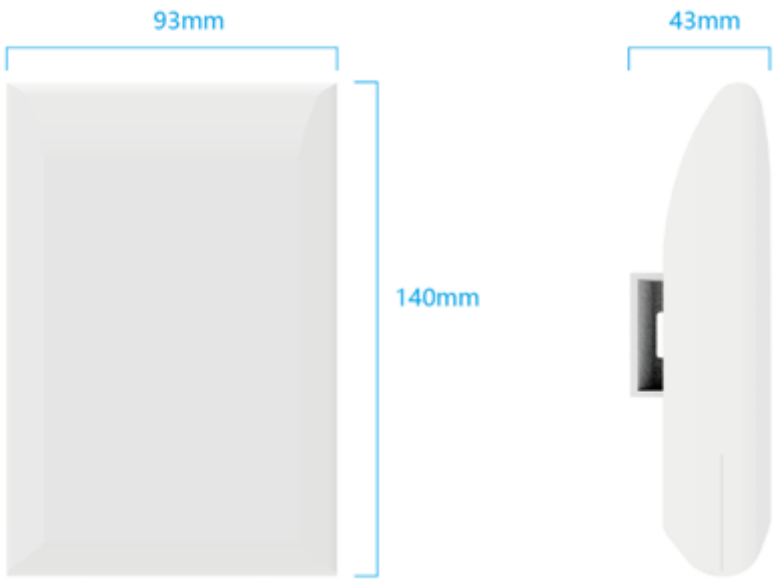
| TX Power ¹⁾ | | | | Sensitivity ²⁾ | | |
|------------------------|---------------------------------------|-----------------------|-------------------------|---------------------------|---------------------------|-------------------------|
| ³⁾ | Date Rate ⁴⁾ | Avg. TX ⁵⁾ | Tolerance ⁶⁾ | Date Rate ⁷⁾ | Sensitivity ⁸⁾ | Tolerance ⁹⁾ |
| 11a/n ¹⁰⁾ | 6 Mbps ¹¹⁾ | 21dBm ¹²⁾ | +/- 2dBm ¹³⁾ | 6 Mbps ¹⁴⁾ | -93dBm ¹⁵⁾ | +/- 2dBm ¹⁶⁾ |
| | 54 Mbps ¹⁷⁾ | 19dBm ¹⁸⁾ | +/- 2dBm ¹⁹⁾ | 54 Mbps ²⁰⁾ | -74dBm ²¹⁾ | +/- 2dBm ²²⁾ |
| | HT20 MCS0(combination) ²³⁾ | 24dBm ²⁴⁾ | +/- 2dBm ²⁵⁾ | HT20 MCS0 ²⁶⁾ | -93dBm ²⁷⁾ | +/- 2dBm ²⁸⁾ |
| | HT20 MCS7(combination) ²⁹⁾ | 21dBm ³⁰⁾ | +/- 2dBm ³¹⁾ | HT20 MCS7 ³²⁾ | -73dBm ³³⁾ | +/- 2dBm ³⁴⁾ |
| | HT40 MCS0(combination) ³⁵⁾ | 24dBm ³⁶⁾ | +/- 2dBm ³⁷⁾ | HT40 MCS0 ³⁸⁾ | -90dBm ³⁹⁾ | +/- 2dBm ⁴⁰⁾ |
| | HT40 MCS7(combination) ⁴¹⁾ | 21dBm ⁴²⁾ | +/- 2dBm ⁴³⁾ | HT40 MCS7 ⁴⁴⁾ | -70dBm ⁴⁵⁾ | +/- 2dBm ⁴⁶⁾ |

¹⁰⁾ * The combined power in the chart above is the result of tested single power plus 3dB

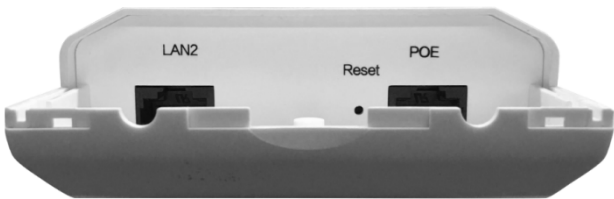
Networking



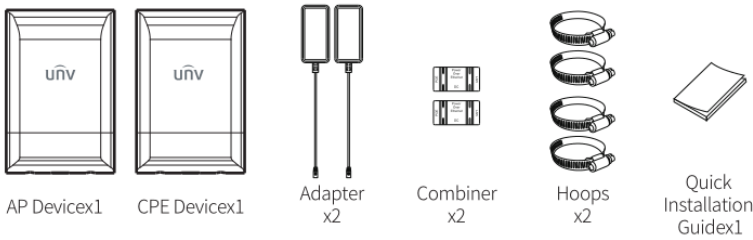
Dimensions



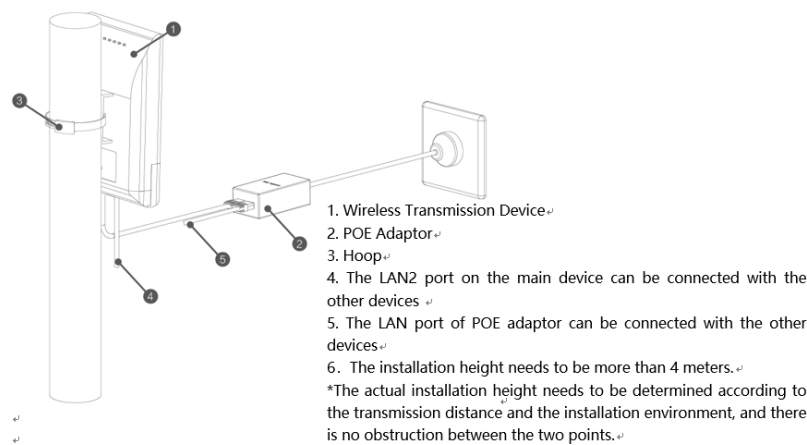
Interface



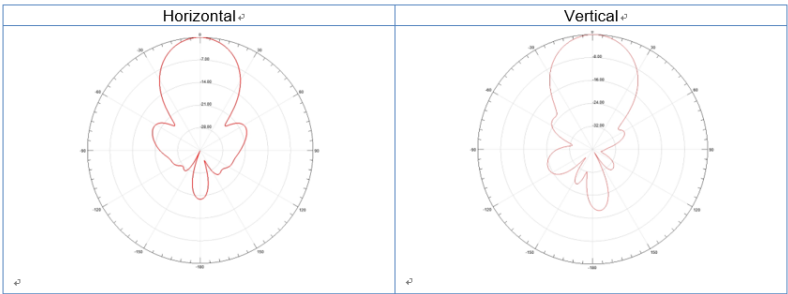
Packing List



Installation



Antenna Polar Plots



Zhejiang Uniview Technologies Co., Ltd.

<http://www.uniview.com>
 overseasbusiness@uniview.com; globalsupport@uniview.com
 No. 369, Xietong Road, Xixing Sub-district, Binjiang District, Hangzhou City, 310051, Zhejiang Province, China
(Zhejiang) Pilot Free Trade Zone, China



©2023-2025 Zhejiang Uniview Technologies Co., Ltd. All rights reserved.
*Product specifications and availability are subject to change without notice.
*Despite our best efforts, technical or typographical errors may exist in this document.
Uniview cannot be held responsible for any such errors and reserves the right to change the contents of this document without prior notice.