

# Network Video Recorder

## NVR301-S3-P Series



### Features

- Support Ultra 265/H.265/H.264 video formats
- 4/8/16-channel input
- Plug & Play with 4/8 independent PoE network interfaces
- Support mainstream cameras of ONVIF conformance (Profile S, Profile G, Profile T ) and RTSP protocols
- Support 1-ch HDMI, 1-ch VGA, HDMI up to 4K (3840x2160) resolution
- HDMI and VGA simultaneous output
- Up to 4K resolution recording
- Support cloud upgrade

### Specifications

| Model               | NVR301-04S3-P4                                | NVR301-08S3-P8   | NVR301-16S3-P8   |
|---------------------|---|--|--|
| Decoding            |   |  |  |
| Decoding Format     | Ultra 265, H.265, H.264                       |  |  |
| Decoding Capability | 1 x 4K@30, 4 x 5MP@25, 4 x 4MP@25, 4 x 3MP@25 | 1 x 4K@30, 4 x 5MP@25, 4 x 4MP@25, 4 x 3MP@25, 6 x 1080P@30, 8 x 720P@30 | 1 x 4K@30, 4 x 5MP@25, 4 x 4MP@25, 4 x 3MP@25, 4 x 1080P@30, 8 x 720P@30, 16 x D1@25 |

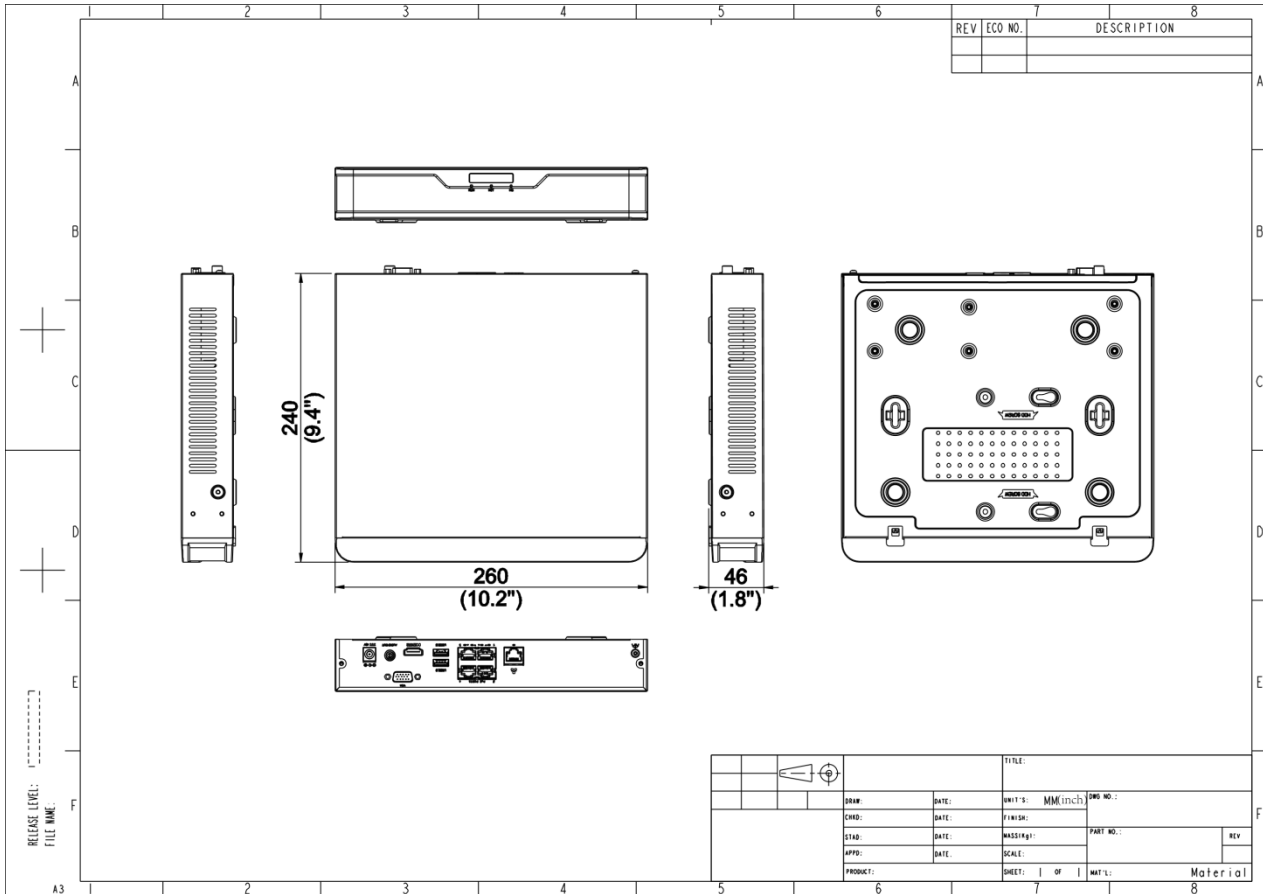
|                                 |  |  |   |
|---------------------------------|--|--|---|
| Decoding Capability Description | The resolution of each channel cannot exceed 4000 pixels in length and 3000 pixels in width  | The resolution of each channel cannot exceed 4000 pixels in length and 3000 pixels in width  |   |
| Audio Compression               | G.711A, G.711U   |  |   |
| <b>Network</b>                  |  |  |   |
| Incoming Bandwidth              | 64 Mbps  |  |   |
| Outgoing Bandwidth              | 48 Mbps  |  |   |
| Remote Users                    | 128  |  |   |
| Protocols                       | TCP/IP P2P UPnP NTP DHCP PPPoE HTTP HTTPS DNS DDNS SMTP RTSP IPv4  | TCP/IP P2P UPnP NTP DHCP PPPoE HTTP HTTPS DNS DDNS SMTP RTSP IPv4  | TCP/IP P2P UPnP NTP DHCP PPPoE HTTP HTTPS DNS DDNS SMTP RTSP  |
| Browser(Plugin)                 | IE10, IE11, Chrome 45+, Edge 79+, Firefox 52+  | IE10, IE11, Chrome 45+, Edge 79+, Firefox 52+  | Windows:IE(IE10/11), Firefox (version 52.0 and above), Chrome(version 45 and above), Edge(version 79 and above)       |
| <b>Video/Audio Input</b>        |  |  |   |
| IP Video Input                  | 4-ch   | 8-ch   | 16-ch   |
| <b>Video/Audio Output</b>       |  |  |   |
| HDMI Output                     | 4K (3840 × 2160)/30 Hz, 1920 × 1080/60 Hz, 1920 × 1080/50 Hz, 1600 × 1200/60 Hz, 1280 × 1024/60 Hz, 1280 × 720/60 Hz, 1024 × 768/60 Hz | 4K (3840 × 2160)/30 Hz, 1920 × 1080/60 Hz, 1920 × 1080/50 Hz, 1600 × 1200/60 Hz, 1280 × 1024/60 Hz, 1280 × 720/60 Hz, 1024 × 768/60 Hz | HDMI:4K(3840x2160)/30Hz, 1920x1080/60Hz, 1920x1080/50Hz, 1600x1200/60Hz, 1280x1024/60Hz, 1280x720/60Hz, 1024x768/60Hz |
| VGA Output                      | 1920 × 1080/60 Hz, 1920 × 1080/50 Hz, 1600 × 1200/60 Hz, 1280 × 1024/60 Hz, 1280 × 720/60 Hz, 1024 × 768/60 Hz                         | 1920 × 1080/60 Hz, 1920 × 1080/50 Hz, 1600 × 1200/60 Hz, 1280 × 1024/60 Hz, 1280 × 720/60 Hz, 1024 × 768/60 Hz                         | VGA:1920x1080/60Hz, 1920x1080/50Hz, 1600x1200/60Hz, 1280x1024/60Hz, 1280x720/60Hz, 1024x768/60Hz                      |
| RCA Audio Output                | 1-ch   |  |   |
| Liveview Display                | 1/4  | 1/4/6/8/9  | 1/4/6/8/9/16  |
| Corridor Mode Screen            | 3/4  | 3/4/5/7/9  | 3/4/5/7/9/10/12/16  |
| <b>Snapshot</b>                 |  |  |   |

|                               |  |  |   |
|-------------------------------|--|--|---|
| FTP/Schedule/Event Snapshot   | 1-ch snapshot (max. D1 (720 × 576) video resolution, with D1 snapshot resolution)  | 1-ch snapshot (max. D1 (720 × 576) video resolution, with D1 snapshot resolution)  | 1-ch snapshot, up to D1 resolution  |
| <b>Recording</b>              |  |  |   |
| Recording Resolution          | 8 MP/6 MP/5 MP/4 MP/3 MP/1080P/960P/720P/D1/2CIF/CIF   |  |   |
| Synchronous Playback in Local | 4-ch   | 8-ch   | 16-ch   |
| <b>Smart</b>                  |  |  |   |
| VCA Detection by IPC          | Face Detection, SIP (Intrusion Detection, Cross Line Detection, Enter Area, Leave Area), Ultra Motion Detection (UMD)  |  |   |
| VCA Search                    | Face Snapshot Search, Behavior Search  |  |   |
| Smart by IPC                  | Total 4-ch(Face Detection, SIP, UMD)   |  |   |
| <b>Alarm</b>                  |  |  |   |
| General Alarm                 | Auto Tracking, Motion Detection, Tampering, Human Body Detection, Video Loss, Alarm Input, Audio Detection   |  |   |
| Alert Alarm                   | IP Conflict, Network Disconnected, Disk Offline, Disk Abnormal, Illegal Access, Hard Disk Space Low, Hard Disk Full, Recording/Snapshot Abnormal   |  |   |
| <b>GUI Language</b>           |  |  |   |
| GUI Language                  | 21 languages: Chinese, English, Vietnamese, Thai, Turkish, Spanish (Latin America), Portuguese (Brazil), Spanish, Portuguese, French, German, Italian, Dutch, Polish, Czech, Hungarian, Slovak, Russian, Hebrew, Arabic, Ukrainian | 21 languages: Chinese, English, Vietnamese, Thai, Turkish, Spanish (Latin America), Portuguese (Brazil), Spanish, Portuguese, French, German, Italian, Dutch, Polish, Czech, Hungarian, Slovak, Russian, Hebrew, Arabic, Ukrainian |   |
| <b>Hard Disk</b>              |  |  |   |
| SATA                          | 1 SATA Interface   |  |   |
| Capacity                      | Up to 10 TB for each HDD (The maximum HDD capacity varies with environment temperature and hard disk size)   | Up to 10 TB for each HDD (The maximum HDD capacity varies with environment temperature and hard disk size)   | Up to 10 TB for each HDD (The maximum HDD capacity varies with environment temperature) |
| <b>External Interface</b>     |  |  |   |
| Network Interface             | 1 RJ45 10 M/100 M self-adaptive Ethernet Interface   |  |   |
| USB                           | Rear panel: 2 × USB2.0   |  |   |
| RS485                         | N/A  |  |   |

|                                 |  |  |  |
|---------------------------------|--|--|--|
| RS232                           | N/A  |  |  |
| Alarm In                        | N/A  |  |  |
| Alarm Out                       | N/A  |  |  |
| Power Supply                    | DC 48 V/1.35 A                                     | DC 52 V/1.8 A                                      | DC 52 V/1.8 A                                      |
| <b>PoE</b>                      |  |  |  |
| PoE Interface                   | 4 RJ45 10 M/100 M self-adaptive Ethernet Interface | 8 RJ45 10 M/100 M self-adaptive Ethernet Interface | 8 RJ45 10 M/100 M self-adaptive Ethernet Interface |
| Max Power                       | Max 30 W for single port, Max 54 W in total        | Max 30 W for single port, Max 75 W in total        | Max 30 W for single port, Max 75 W in total        |
| Supported Standard              | IEEE 802.3at, IEEE 802.3af                         |  |  |
| <b>Working Environment</b>      |  |  |  |
| Working Temperature             | -10 °C to 55 °C (14 °F to 131 °F)                  |  |  |
| Working Humidity                | ≤ 90% RH (non-condensing)                          |  |  |
| Power Consumption (without HDD) | ≤ 9W   |  |  |
| <b>Dimensions</b>               |  |  |  |
| Weight (without HDD)            | ≤ 1.1Kg (2.43lb)                                   |  |  |
| Dimensions                      | 260mm × 240mm × 46mm (10.2"×9.4"×1.8")             |  |  |
| <b>Certification</b>            |  |  |  |
| Certification                   | CE; FCC; UL; RoHS; WEEE                            |  |  |
| CE                              | EN 55032, EN 61000-3-3, EN IEC 61000-3-2, EN 55035 |  |  |
| FCC                             | Part15 Subpart B                                   |  |  |

## Dimensions

Aggregate product size diagram using "main model" as an example



## Accessories

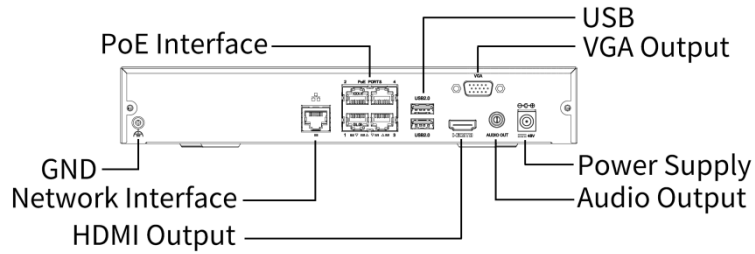
RM-1U-260

1 HDD 1U NVR Rack Mount

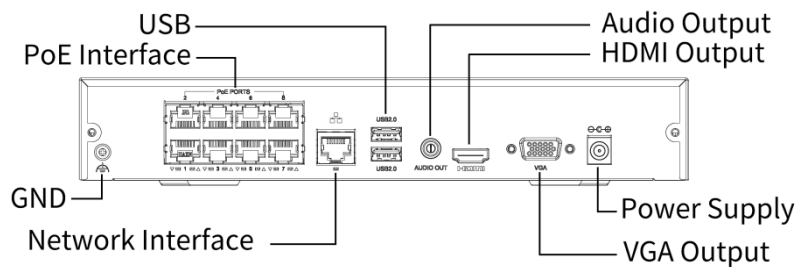


## Rear Panel

[NVR301-04S3-P4]



[NVR301-08/16S3-P8]



**Zhejiang Uniview Technologies Co., Ltd.**

No. 369, Xietong Road, Xixing Sub-district, Binjiang District, Hangzhou City, 310051, Zhejiang Province, China (Zhejiang) Pilot Free Trade Zone, China

Email: [overseasbusiness@uniview.com](mailto:overseasbusiness@uniview.com); [globalsupport@uniview.com](mailto:globalsupport@uniview.com)

<http://www.uniview.com>

©2023-2025 Zhejiang Uniview Technologies Co., Ltd. All rights reserved.

\*Product specifications and availability are subject to change without notice.

\*Despite our best efforts, technical or typographical errors may exist in this document. Uniview cannot be held responsible for any such errors and reserves the right to change the contents of this document without prior notice.