

# 【Datasheet】 UNV LAMP-S16@A10-T30-OS 10° Warm Light Strobe Illuminator 20231228 (Public)

## LAMP-S16@A10-T30-OS



## Features

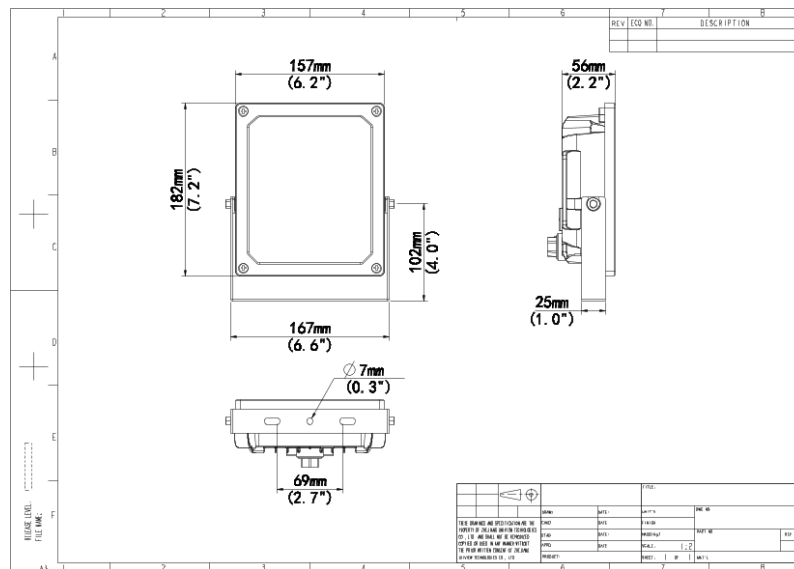
- Elegant appearance, integrated structure design, safety and convenient.
- Uses high-power LED warm light chip, warm and soft light source, glare-free, avoiding light pollution.
- Supports synchronous video illumination.
- Uniform illumination delivers clear image, no smearing or overexposure.
- Pulse signal self-test, no need for setup, automatic high-frequency illumination based on the digital pulse signal of the camera unit.
- Wide voltage allows AC 176V to 264V mains power supply.
- All-weather operation, applicable to harsh environments.
- IP67 protection level, waterproof and dustproof.

## Specifications

| 硬件参数              | Description                        |
|-------------------|------------------------------------|
| LEDs              | 16                                 |
| Light source      | Original high-power warm light LED |
| Color temperature | 3000K                              |

|                               |  |
|-------------------------------|--|
| Strobe luminous flux          | 1400lm@20% duty cycle                              |
| Illumination angle            | 10°  |
| Optimal illumination distance | 16m to 26m   |
| Trigger mode                  | TTL level/switch                                   |
| Trigger level                 | 4V to 6V (active high)                             |
| Trigger frequency             | 40Hz to 200Hz                                      |
| Trigger duty ratio            | 1% to 40%  |
| Response time                 | ≤370 μs  |
| Bracket rotation angle        | -90° to +90°                                       |
| Interface                     | 1 power input, 1 strobe trigger input              |
| Power supply                  | AC176V to 264V, 50/60Hz                            |
| Power consumption             | 30W  |
| Weight                        | 1.4kg  |
| Dimensions (L×W×H)            | 182mm x 157mm x 71.4mm (without universal bracket) |
| Operating environment         | -40° C to +70° C, 10% to 95%RH                     |
| Ingress protection            | IP65   |
| Lifetime                      | >50000h@25° C                                      |

## Dimensions



## Ordering Info

| Product Model | Config     | Description                       |
|---------------|------------|-----------------------------------|
| LAMP-S16      | A10-T30-OS | 10° Warm Light Strobe Illuminator |

**Zhejiang Uniview Technologies Co., Ltd.**

No. 369, Xietong Road, Xixing Sub-district, Binjiang District, Hangzhou City, 310051, Zhejiang Province, China

Email: [overseasbusiness@uniview.com](mailto:overseasbusiness@uniview.com); [globalsupport@uniview.com](mailto:globalsupport@uniview.com)

<http://www.uniview.com>

©2023-2024 Zhejiang Uniview Technologies Co., Ltd. All rights reserved.

\*Product specifications and availability are subject to change without notice.

\*Despite our best efforts, technical or typographical errors may exist in this document. Uniview cannot be held responsible for any such errors and reserves the right to change the contents of this document without prior notice.