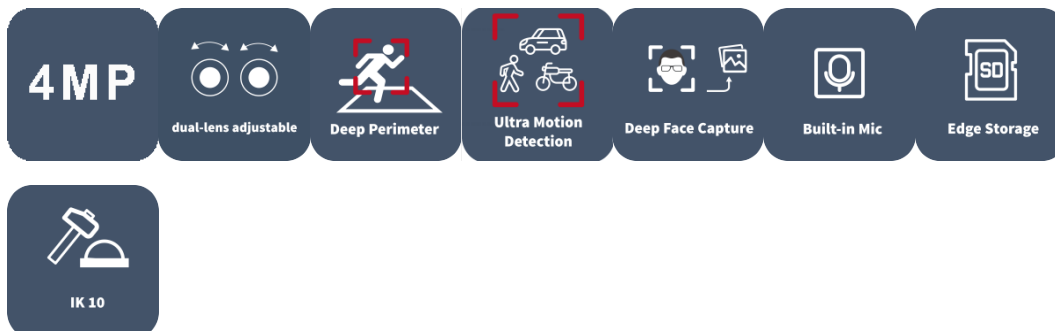


2*4MP Dual-channel Non-Splicing Multiview Series IR Fixed Intelligent Network Camera

IPC3224SS-ADF28(40)K-I1



Features

- High quality image with 2*4MP resolution, 1/3.0"CMOS sensor
- Single IP with dual channels
- 4MP (2688*1520)@25/20fps; 4MP(2560*1440)@25/20fps; 3MP(2304*1296) @30/25fps;2MP(1920*1080)@30/25fps
- Ultra 265, H.264,H.265, MJPEG
- Both channels support intelligent perimeter protection, include cross line, intrusion, enter area, leave area detection
- Based on target classification, smart intrusion prevention significantly reduce false alarm caused by leaves, birds and lights etc., accurately focus on human and motor vehicle and non-motor vehicle
- Intelligent (Only Channel 1)
- Intelligent People Flow Counting and Crowd Density Monitoring (Only Channel 1)

- 130dB true WDR technology enables clear image in strong light scene
- Built-in two Mics
- Supports 512 GB Micro SD card
- DC12V or PoE(IEEE 802.3af) power supply
- IP67 protection and IK10 vandal resistant
- 3-Axis

Specifications

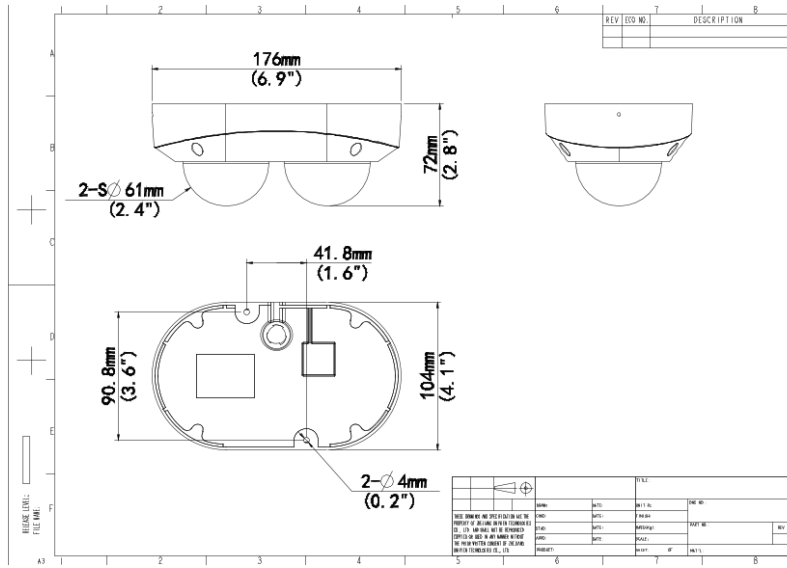
| Camera | Description |
|------------------------|---|
| Max Resolution | 4MP |
| Sensor | 1/3.0" CMOS |
| Min. Illumination | Colour: 0.002 lux (F1.6, AGC ON) 0 lux with IR on |
| Day/Night | IR-cut filter with auto switch (ICR) |
| Shutter | Auto/Manual, 1 ~ 1/100000s |
| Adjustment Angle | Pan: 0° ~ 180° , Tilt: 0° ~ 66° , Rotate: 0° ~ 346° |
| S/N | >52dB |
| WDR | 130dB |
| Lens | Description |
| Focal Length | 2.8 mm |
| Iris Type | Fixed |
| Iris | F1.6 |
| Field of View (H) | 97.68° |
| Field of View (V) | 52.67° |
| Field of View (D) | 102.52° |
| Lens Type | Fixed |
| DORI | Description |
| DORI Distance(Lens) | 2.8mm |
| DORI Distance(Detect) | 63.0m(206.7ft) |
| DORI Distance(Observe) | 25.2m(82.7ft) |

| | |
|---------------------------|---|
| DORI Distance(Recognize) | 12.6m(41.3ft) |
| DORI Distance(Identify) | 6.3m(20.7ft) |
| Illuminator | Description |
| Supplemental Light | IR |
| Illumination Distance(IR) | 30 m (98.4 ft) |
| IR On/Off Control | Auto/Manual |
| Wavelength | 850 nm |
| Video | Description |
| Video Compression | Ultra 265 H.265 H.264 MJPEG |
| H.264 Code Profile | Baseline profile, Main profile, High profile |
| Frame Rate | Main Stream:4MP(2688*1520) ,Max 25fps; 4MP(2560*1440), Max 25fps; 3MP(2304*1296), Max 30fps; 1080P (1920*1080), Max 30fps; 720P(1280*720) Max 30fps Sub Stream: 720P (1280*720), Max 30fps; D1 (720*576), Max 30fps; 640*360,Max 30fps; 2CIF(704*288), Max 30fps; CIF(352*288), Max 30fps; Third Stream: D1 (720*576), Max 30fps; 640*360,Max 30fps; 2CIF(704*288), Max 30fps; CIF(352*288), Max 30fps; |
| Video Bit Rate | 128 Kbps ~ 16 Mbps |
| U-code | Support |
| OSD | Up to 8 OSDs |
| Privacy Mask | Up to 4 areas |
| ROI | Up to 8 areas |
| Video Stream | Triple Streams |
| Image | Description |
| White Balance | Auto Outdoor Fine Tune Sodium Lamp Locked Auto2 |
| Digital Noise Reduction | 2D/3D DNR |
| Smart IR | Support |
| Flip | Normal Flip Vertical Flip Horizontal 180° 90° Clockwise 90° Anti-clockwise |
| Dewarping | N/A |
| HLC | Support |

| | | |
|----------------------------|---|-----|
| BLC | Support | |
| Defog | Digital Defog | |
| Image Stabilization | N/A | |
| Intelligent | Description | |
| Smart Intrusion Prevention | Support False Alarm Filtering: Cross Line Detection, Intrusion Detection, Enter Area Detection, Leave Area Detection | |
| Recognition | Face capture | N/A |
| Statistical Analysis | People counting, support people flow counting and crowd density monitoring | N/A |
| Events | Description | |
| Basic Detection | Motion Detection Ultra Motion Detection Tampering Alarm Audio Detection | |
| General Function | Watermark IP Address Filtering Access Policy ARP Protection RTSP Authentication User Authentication HTTP Authentication Alarm Input Alarm Output | |
| Audio | Description | |
| Audio Compression | G.711U G.711A | |
| Audio Bitrate | 64 Kbps | |
| Two-way Audio | Support | |
| Suppression | Support | |
| Sampling Rate | 8 KHz | |
| Storage | Description | |
| Edge Storage | Micro SD, up to 512 GB | |
| Network Storage | ANR NAS (NFS) | |
| Network | Description | |
| Protocols | IPv4 IPv6 IGMP ICMP ARP TCP UDP DHCP PPPoE RTP RTSP RTCP RTMP DNS DDNS NTP FTP UPnP HTTP HTTPS SMTP 802.1x SNMP QoS SSL/TLS SSH | |
| Compatible Integration | ONVIF (Profile S, Profile G, Profile T) API SDK | |
| User/Host | Up to 32 users. 3 user levels: administrator, common user and operator | |
| Security | Password Protection Strong Password HTTPS Encryption Export Operation Logs Basic and Digest Authentication for RTSP Digest Authentication for HTTP TLS 1.2 WSSE and Digest Authentication for ONVIF | |
| Client | UNV-Link UNV-Link Pro EZStation | |

| | |
|----------------------|--|
| Web Browser | Plug-in required live view: IE 10 and above, Chrome 45 and above, Firefox 52 and above, Edge 79 and above Plug-in free live view: Chrome 57.0 and above, Firefox 58.0 and above, Edge 16 and above |
| Interface | Description |
| Audio I/O | 1 Input: impedance 35k Ω ; amplitude 2V [p-p] 1 Output: impedance 600 Ω ; amplitude 2V [p-p] |
| Alarm I/O | 1/1 |
| Serial Port | N/A |
| Built-in Mic | Built-in two mics |
| Built-in Speaker | N/A |
| WIFI | N/A |
| Network | 1 x RJ45 10M/100M Base-TX Ethernet |
| Video Output | N/A |
| Certification | Description |
| EMC | CE-EMC (EN 55032, EN 61000-3-3, EN IEC 61000-3-2, EN 50130) FCC (FCC 47 CFR part15 B) |
| Safety | CE-LVD (EN 62368-1) UL/CUL (UL 62368-1, CAN/CSA C22.2 No. 62368-1) |
| Environment | CE-RoHS (2011/65/EU;(EU)2015/863); WEEE (2012/19/EU) |
| Protection | IP67 (IEC 60529) IK10 (IEC 62262) |
| General | Description |
| Power | DC 12V \pm 25%, PoE (IEEE 802.3af) Power consumption: Max 9.1W |
| Power Interface | \varnothing 5.5 mm coaxial power plug |
| Dimensions | 176 \times 104 \times 72mm (6.9" \times 4.1" \times 2.8") |
| Weight | 0.62kg(1.37lb) |
| Material | Metal |
| Working Environment | -30 $^{\circ}$ C \sim 60 $^{\circ}$ C (-22 $^{\circ}$ F \sim 140 $^{\circ}$ F), Humidity: \leq 95% RH (non-condensing) |
| Storage Environment | -30 $^{\circ}$ C \sim 60 $^{\circ}$ C (-22 $^{\circ}$ F \sim 140 $^{\circ}$ F), Humidity: \leq 95% RH (non-condensing) |
| Surge Protection | 4KV |
| Reset Button | Support |
| Web Client Language | 20 Languages Traditional Chinese, English, Simplified Chinese, Polish, German, Russian, French, Korean, Dutch, Czech, Portuguese (Europe), Portuguese (Brazil), Japanese, Thai, Turkish, Spanish (Latin America), Spanish (Europe), Hungarian, Italian, Vietnamese |

Dimensions



Zhejiang Uniview Technologies Co., Ltd.

No. 369, Xietong Road, Xixing Sub-district, Binjiang District, Hangzhou City, 310051, Zhejiang Province, China (Zhejiang) Pilot Free Trade Zone, China

Email: overseasbusiness@uniview.com; globalsupport@uniview.com

<http://www.uniview.com>

©2023-2024 Zhejiang Uniview Technologies Co., Ltd. All rights reserved.

*Product specifications and availability are subject to change without notice.

*Despite our best efforts, technical or typographical errors may exist in this document. Uniview cannot be held responsible for any such errors and reserves the right to change the contents of this document without prior notice.