

# Network Video Recorder

## NVR824-R-IX2 Series



### Features

- Support Ultra 265/H.265/H.264 video formats
- 128/256-channel input
- Third-party IP cameras supported with ONVIF conformance: Profile S, Profile G, Profile C, Profile Q, Profile A, Profile T
- Support 2-ch HDMI, 1-ch VGA, HDMI at up to 4K (3840x2160) resolution
- HDMI1, HDMI2 and VGA independent outputs provided
- Up to 8 Megapixels resolution recording
- Redundant power supply optional
- Support HDD hot swap with RAID 0, 1, 5, 6, 10, 50, 60 storage scheme configurable
- Support 2 miniSAS Interfaces
- Support 12V power output
- ANR technology to enhance the storage reliability when the network is disconnected
- Support cloud upgrade
- Support N+1 Hot spare

### Specifications

Model	NVR824-128-R-IX2-8G	NVR824-256-R-IX2-16G
Decoding		

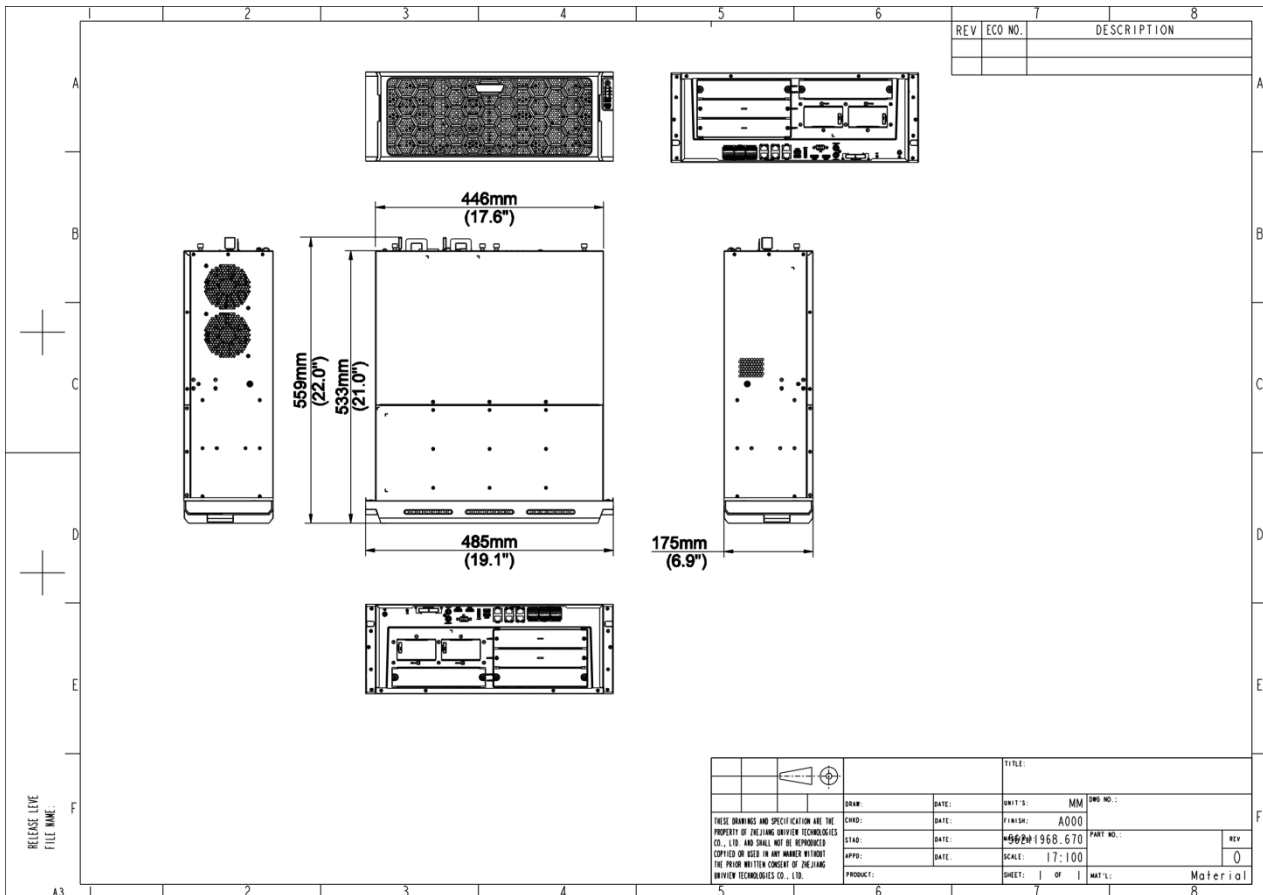
Decoding Format	Ultra 265, H.265, H.264	
Decoding Capability	3 x 12MP@30, 5 x 4K@30, 8 x 5MP@30, 15 x 4MP@20, 20 x 3MP@20, 20 x 1080P@30, 24 x 1080P@25, 45 x 720P@30, 54 x 720P@25, 96 x D1	
Decoding Capability Description	The resolution of each channel cannot exceed 4096 pixels in length or width, For VGA/HDMI independent output, the VGA live video is output by default. To output the highest resolution video from the HDMI port, please clear the VGA video on the preview page.	
Audio Compression	G.711A, G.711U	
<b>Network</b>		
Incoming Bandwidth	768 Mbps	
Outgoing Bandwidth	768 Mbps	
Remote Users	128	
Protocols	TCP/IP, P2P, UPnP, NTP, DHCP, PPPoE, HTTP, HTTPS, DNS, DDNS, SNMP, SMTP, NFS, 802.1x, IPv6, IPv4	
Browser(Plugin)	IE10, IE11, Chrome 45+, Edge 79+, Firefox 52+	
<b>Video/Audio Input</b>		
IP Video Input	128-ch	256-ch
RCA Audio Input	1-ch	
<b>Video/Audio Output</b>		
Video Output	Support 2-ch HDMI, 1-ch VGA, HDMI1 and HDMI2 and VGA independent output	
HDMI Output	4K (3840 × 2160)/30 Hz, 1920 × 1080/60 Hz, 1920 × 1080/50 Hz, 1600 × 1200/60 Hz, 1280 × 1024/60 Hz, 1280 × 720/60 Hz, 1024 × 768/60 Hz	
RCA Audio Output	1-ch	
Liveview Display	VGA: 1/4/6/8/9/16/25/36; HDMI: 1/4/6/8/9/16/25/36/64	
Corridor Mode Screen	3/4/5/7/9/10/12/16/32	
<b>Two-way Audio</b>		
Two-way Audio	1-ch, RCA (Using the audio input and output)	
<b>Snapshot</b>		
FTP/Schedule/Event Snapshot	Full-ch snapshot (max. 4000 × 3000 video resolution, with snapshot resolution same as the video resolution)	
<b>Recording</b>		
Recording Resolution	12 MP/8 MP/6 MP/5 MP/4 MP/3 MP/1080P/960P/720P/D1/2CIF/CIF	

Synchronous Playback in Local	16-ch	
<b>Smart</b>		
VCA Detection by IPC	Face Detection, Face Comparison, Vehicle Detection, SIP (Intrusion Detection, Cross Line Detection, Enter Area, Leave Area), Ultra Motion Detection (UMD), Temperature Detection (Fire Detection, Smoking Detection, Temperature Measurement, Smoke and Fire Detection), People Counting (People Flow Counting, Crowd Density Monitoring), Video Metadata, Traffic Monitoring	
Smart by NVR	Face Detection, Face Comparison, Smart Intrusion Prevention (SIP), Behavior Analysis, (At same channel, only one smart function by NVR can be enabled simultaneously.)	
VCA Search	Face Snapshot Search, Face Comparison Search, Motor Vehicle Search, Non-Motor Vehicle Search, Human Body Search, General Search, People Counting Report	
Smart by IPC	All channels (up to 64 images/s in total) Face Detection, Face Comparison, Vehicle Detection, Temperature Detection, SIP, UMD, Video Metadata, Traffic Monitoring	
Search by Image	Support	
Vehicle Picture Library	Up to 5 vehicle picture libraries, with up to 25,000 vehicle pictures in total	
SIP by NVR	96-ch	192-ch
with normal cameras	96-ch	192-ch
Type	No Helmet Detection, No Chef Hat Detection, No Work Clothes Detection, Smoking Detection, Smoke and Fire Detection, Calling Detection, No Mask Detection, Rat Detection, Long Stay Detection, Fall Detection, Fight Detection, Absence Detection, Climbing Detection, Sleep on Duty Detection, People Counting, Using Mobile Phone Detection, People Gathering, People Dispersion	
<b>Alarm</b>		
General Alarm	Defocus Detection, Scene Change Detection, Object Left Behind, Object Removed, Auto Tracking, Motion Detection, Tampering, Human Body Detection, Video Loss, Audio Detection, Alarm Input	
Alert Alarm	IP Conflict, Network Disconnected, Disk Offline, Disk Abnormal, Illegal Access, Hard Disk Space Low, Hard Disk Full, Recording/Snapshot Abnormal, High CPU Temperature, High Motherboard Temperature, Array Damaged, Array Degraded	
<b>GUI Language</b>		

GUI Language	38 languages: Simplified Chinese, Traditional Chinese, English, Vietnamese, Thai, Turkish, Spanish (Latin America), Portuguese (Brazil), Spanish, Portuguese, French, German, Italian, Dutch, Polish, Czech, Hungarian, Slovak, Russian, Hebrew, Arabic, Ukrainian, Estonian, Bulgarian, Greek, Romanian, Danish, Swedish, Norwegian, Finnish, Croatian, Slovenia, Serbia, Korean, Japanese, Latvian, Lithuanian, Persian
<b>Hard Disk</b>	
SATA	24 SATA Interfaces
Capacity	Up to 16 TB for each HDD (The maximum HDD capacity varies with environment temperature)
Disk Group	Support
Redundant Storage	Support
Disk Array Type	RAID 0, 1, 5, 6, 10, 50, 60
Hot Swap	Support
<b>External Interface</b>	
Network Interface	4 RJ45 10 M/100 M/1000 M self-adaptive Ethernet Interface
USB	Front panel: 2 × USB2.0, Rear panel: 2 × USB3.0
RS485	1
RS232	1
Alarm In	24-ch
Alarm Out	8-ch
eSATA	1
miniSAS	2
Extension Board	4
Power Output	12 V
Power Supply	AC 100 to 240 V
Power Switch	Support
Redundant Power Supply	Support
<b>Working Environment</b>	
Working Temperature	-10 °C to 50 °C (14 °F to 122 °F)
Working Humidity	≤ 90% RH (non-condensing)
Power Consumption (without HDD)	≤350W
<b>Dimensions</b>	

Weight (without HDD)	15KG
Height	4U
Dimensions	482mm × 559mm × 175mm (19.0" × 22.0" × 6.9" )
<b>Certification</b>	
Certification	CE; FCC; UL; RoHS; WEEE
CE	EN 55032, EN 61000-3-3, EN IEC 61000-3-2, EN 55035
FCC	Part15 Subpart B

## Dimensions



## Accessories

FB-HD04-B-NB

4-ch HDMI Output Decoding Card



FB-HD07-B-NB

7-ch HDMI Output Decoding Card



DEU1016-B

16 HDDs 3U Disk Enclosure



SL-A

Slide Rail

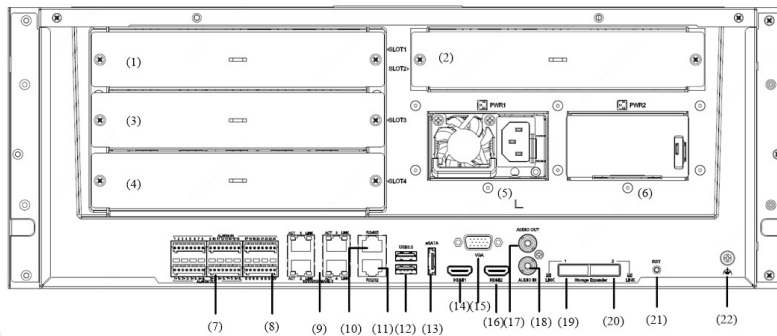


PWR-DC12-550A-IN

550W Power Accessories Module



## Rear Panel



(1) Slot1	(2) Slot2	(3) Slot3
(4) Slot4	(5) Power Supply 1	(6) Power Supply 2(optional)
(7) Alarm in/out	(8) 12V DC Output	(9) Network Interface
(10) RS485	(11) RS232	(12) USB3.0
(13) eSATA	(14) HDMI1 Output	(15) VGA Output
(16) HDMI2 Output	(17) Audio Output	(18) Audio Input
(19) miniSAS	(20) miniSAS	(21) RST
(22) GND		

**Zhejiang Uniview Technologies Co., Ltd.**

No. 369, Xietong Road, Xixing Sub-district, Binjiang District, Hangzhou City, 310051, Zhejiang Province, China (Zhejiang) Pilot Free Trade Zone, China

Email: [overseasbusiness@uniview.com](mailto:overseasbusiness@uniview.com); [globalsupport@uniview.com](mailto:globalsupport@uniview.com)

<http://www.uniview.com>

©2024 Zhejiang Uniview Technologies Co., Ltd. All rights reserved.

\*Product specifications and availability are subject to change without notice.

\*Despite our best efforts, technical or typographical errors may exist in this document. Uniview cannot be held responsible for any such errors and reserves the right to change the contents of this document without prior notice.