

Digital Video Recorder

XVR301-F Series



Features

- Support H.265/H.264 video formats
- Support audio over coaxial cable (only for TVI cameras)
- Control the dual-light of UNV analog cameras under TVI
- Support analog camera upgrade over coaxial cable
- Support TVI, AHD, CVI, CVBS, IP cameras with adaptive access
- 4/8/16-channel BNC input
- Support 1-ch HDMI output, 1-ch VGA output at up to 1920*1080
- HDMI and VGA simultaneous output
- Long transmission distance over coaxial cable
- Support mainstream cameras of ONVIF and RTSP protocols

Specifications

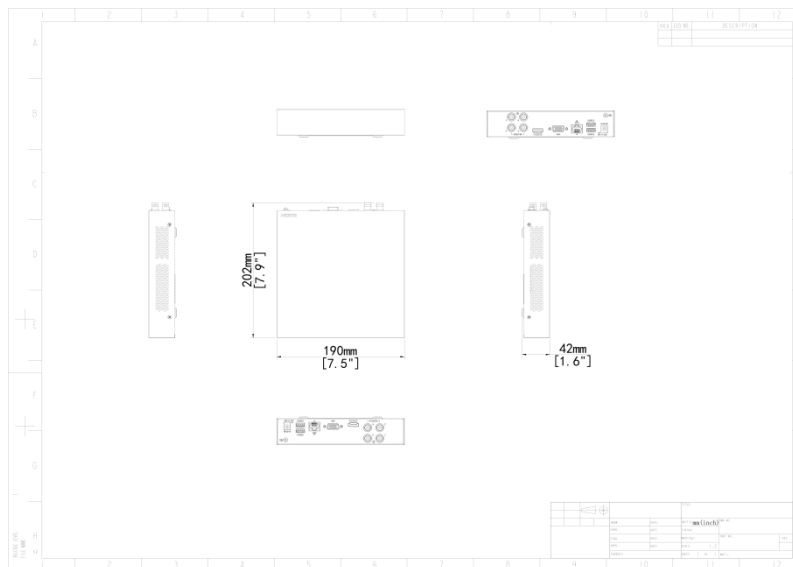
| Video/Audio Input | Description |
|--------------------|---|
| IP Video Input | XVR301-04F/XVR301-16F:2-ch |
| Analog Video Input | XVR301-04F:4-ch, BNC XVR301-16F:16-ch, BNC |
| Max IP Video Input | XVR301-04F:6-ch |

| | |
|-------------------------------|---|
| | XVR301-16F:18-ch |
| Supported Analog Camera Types | <p>XVR301-04F/XVR301-16F:Support AHD input: 1080P@30fps 720P@30fps</p> <p>Support TVI input: 1080P@30fps 720P@30fps</p> <p>Support CVI input: 1080P@30fps 720P@30fps</p> <p>Support CVBS input</p> |
| Video/Audio Output | Description |
| HDMI Output | XVR301-04F/XVR301-16F:HDMI:1920x1080/60Hz, 1920x1080/50Hz, 1600x1200/60Hz, 1280x1024/60Hz, 1280x720/60Hz, 1024x768/60Hz |
| VGA Output | XVR301-04F/XVR301-16F:VGA:1920x1080/60Hz, 1920x1080/50Hz, 1600x1200/60Hz, 1280x1024/60Hz, 1280x720/60Hz, 1024x768/60Hz |
| Live View Display | <p>XVR301-04F:HDMI/VGA: 1/4/6/8/9</p> <p>XVR301-16F:HDMI/VGA: 1/4/6/8/9/25</p> |
| Encoding/Decoding | Description |
| Recording Resolution | XVR301-04F/XVR301-16F:1080P Lite/720P/D1 |
| Recording Frame Rate | <p>XVR301-04F:Main stream: 1080P Lite@25fps Sub stream: D1@25fps Main stream: 720P@30fps Sub stream: D1@30fps</p> <p>XVR301-16F:Main stream: 1080P Lite@12fps Sub stream: D1@12fps Main stream: 720P@15fps Sub stream: D1@15fps</p> |
| Audio Sample Rate | XVR301-04F/XVR301-16F:8 KHz, 16 bit per channel |
| Audio Bit Rate | XVR301-04F/XVR301-16F:64Kbps per channel |
| Decoding Capability | <p>XVR301-04F:Analog:4 x 1080P Lite@25, 4 x 720P@30 IP: 1 x 6MP@20, 2 x 1080P@30</p> <p>XVR301-16F:Analog:16x 1080P Lite@12, 16x 720P@15 IP: 1 x 8MP@30, 2 x 4MP@30, 4 x 1080P@30, 8 x 720P@30,16 x D1@30</p> |
| Two-way Audio | Description |
| Two-way Audio | XVR301-04F/XVR301-16F:N/A |
| Analog Snapshot | Description |
| FTP/Schedule/Event Snapshot | <p>XVR301-04F:FTP/Event snapshot:4-ch snapshot, up to 704*576 resolution, Schedule snapshot:not supported</p> <p>XVR301-16F:FTP/Event snapshot:16-ch snapshot, up to 704*576 resolution,</p> |

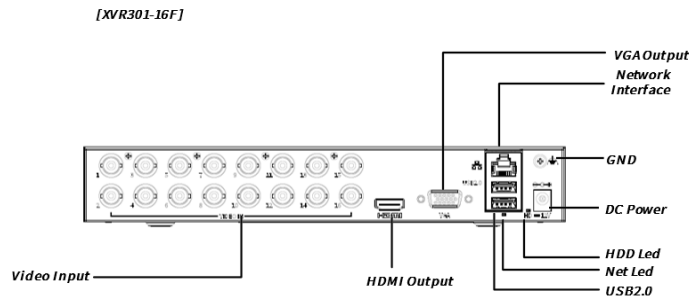
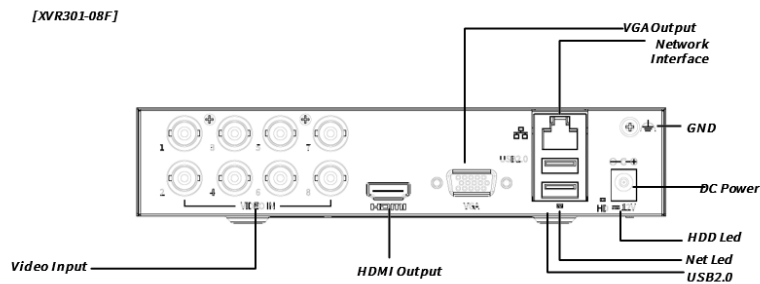
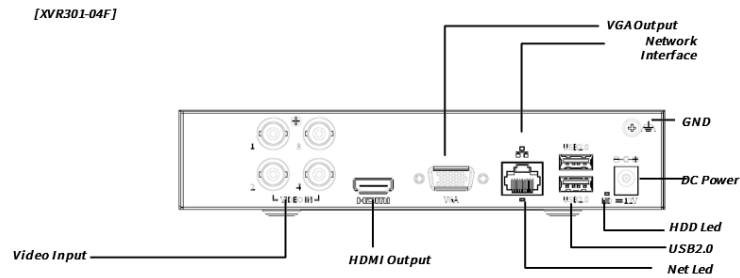
| | |
|----------------------------|--|
| | Schedule snapshot: not supported |
| Network | Description |
| Incoming Bandwidth | XVR301-04F: 24Mbps (Up to 32Mbps after all analog channel conversion) XVR301-16F: 24Mbps (Up to 56Mbps after all analog channel conversion) |
| Outgoing Bandwidth | XVR301-04F: 48Mbps XVR301-16F: 64Mbps |
| Remote Users | XVR301-04F/XVR301-16F: 128 |
| Protocols | XVR301-04F/XVR301-16F: TCP/IP; P2P; UPnP; NTP; DHCP; HTTP; HTTPS; DNS; DDNS; SMTP |
| Browser(Plugin) | XVR301-04F/XVR301-16F: Windows: IE (IE10/ 11), Firefox (version 52.0 and above), Chrome (version 45 and above), Edge (version 79 and above) |
| Smart | Description |
| Analog Smart by XVR | XVR301-04F/XVR301-16F: Ultra Motion Detection(UMD) |
| VCA Search | XVR301-04F/XVR301-16F: Behavior Search |
| Smart Functions by XVR | XVR301-04F: 4-ch(UMD) XVR301-16F: 8-ch(UMD) |
| Alarm | Description |
| General Alarm | XVR301-04F/XVR301-16F: Motion |
| Alert Alarm | XVR301-04F/XVR301-16F: IP Conflict; Network Disconnected; Disk offline; Disk Abnormal; Illegal Access; Hard Disk Space Low; Hard Disk Full; Recording/Snapshot Abnormal |
| GUI Language | Description |
| GUI Language | XVR301-04F/XVR301-16F: 20 languages: English, Vietnamese, Thai, Turkish, Spanish (Latin America), Portuguese (Brazil), Spanish, Portuguese, French, German, Italian, Dutch, Polish, Czech, Hungarian, Slovak, Russian, Hebrew, Arabic, Ukrainian |
| Hard Disk | Description |
| SATA | XVR301-04F/XVR301-16F: 1 SATA interface |
| Capacity | XVR301-04F/XVR301-16F: Up to 6TB for each HDD |
| External Interface | Description |
| Network Interface | XVR301-04F/XVR301-16F: 1 RJ45 10M/100M self-adaptive Ethernet Interface |
| USB | XVR301-04F/XVR301-16F: Rear panel: 2 x USB2.0 |
| Power Supply | XVR301-04F/XVR301-16F: DC 12V/1.5A |
| Working Environment | Description |
| Working Temperature | XVR301-04F/XVR301-16F: -10 °C ~ 55 °C (14 °F ~ 131 °F) |

| | |
|----------------------------------|---|
| Working Humidity | XVR301-04F/XVR301-16F: ≤ 90% RH(non-condensing) |
| Power Consumption (without HD D) | XVR301-04F/XVR301-16F: ≤ 10W |
| Dimensions | Description |
| Weight (without HDD) | XVR301-04F: ≤ 0.6 Kg (1.32lb) XVR301-16F: ≤ 0.85 Kg (1.87lb) |
| Dimensions | XVR301-04F: 190mm × 202mm × 42mm (7.5" × 7.9" × 1.6") XVR301-16F: 253mm × 212mm × 42mm (10.0" × 8.4" × 1.7") |
| Certification | Description |
| Certification | XVR301-04F/XVR301-16F: CE, FCC, UL, RoHS, WEEE |
| CE | XVR301-04F/XVR301-16F: EN 55032, EN 61000-3-3, EN IEC 61000-3-2, EN 55035 |
| FCC | XVR301-04F/XVR301-16F: Part15 Subpart B |

Dimensions



Rear Panel



Zhejiang Uniview Technologies Co., Ltd.

No. 369, Xietong Road, Xixing Sub-district, Binjiang District, Hangzhou City, 310051, Zhejiang Province, China

Email: overseasbusiness@uniview.com; globalsupport@uniview.com

<http://www.uniview.com>

©2023-2024 Zhejiang Uniview Technologies Co., Ltd. All rights reserved.

*Product specifications and availability are subject to change without notice.

*Despite our best efforts, technical or typographical errors may exist in this document. Uniview cannot be held responsible for any such errors and reserves the right to change the contents of this document without prior notice.