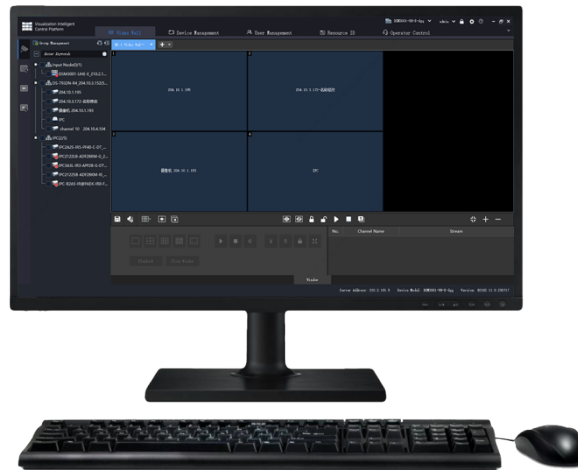


# EZWall Video Wall Client Software

## SWP-EZWall



## Features

- Supports multiple device models including DC5504/06/10-E-V2, ADU8706/09/12-E-V3, DMC9000-2U-V3 and DMC9000-3U
- Supports Uniview and other manufacturers' IPC and NVR.
- Live view, sequence display, and play signal source on video wall, open windows by one click, split window, window roaming, virtual
- LED, scenes and scene plans.
- Supports small pixel pitch LED, turn on/off Uniview screens automatically at a set time, turn on/off manually or with a delay.

## Specifications


Model	SWP-EZWall
BOM	
BOM	0501C1KH
Function	
Device Management	<p>Add, edit, and delete devices on LAN</p> <p>Supports automatic search, and allows user to add devices manually</p> <p>Open device's Web interface from the client</p> <p>View device status, including status of NVR-connected IPCs</p> <p>Supports Onvif</p>
Video Wall	<p>Add, edit, and delete video walls; supports small pixel pitch LED</p> <p>Bind decoding channels automatically, bind decoding channels by one-click, splice screens, custom screen layout</p> <p>Scene and scene plan (execute by set time interval or 24-hour schedule)</p> <p>Multiple ways to open windows: one click (1/3/4/5/6/7/8/9/10/13/16/17/25/32/36/64 and M*N custom layout), right mouse button, or coordinates</p> <p>Window roaming and overlay, double-click window to view in full screen mode, renumber windows, window lock/unlock, display on top/bottom, and view window/split window info</p> <p>Start videos in batches on one or multiple screens</p> <p>Sequence display videos in one or multiple windows</p> <p>Play PC's video signals through server's DVI or VGA interface to the video wall</p> <p>Device group, including default group and custom group</p> <p>Virtual LED: LED coordinates, custom LED content, font style, font size, font color, character spacing and alignment, background color and transparency, moving speed and mode; enable/disable virtual LEDs</p> <p>Supports audio output and volume adjustment</p>
Sequence Resource	Add, edit, and delete sequence resource
Screen Control	<p>Turn on/off screen automatically at a set time</p> <p>Turn on/off screen manually</p> <p>Turn on/off screen with delay</p>
Client Configuration	<p>Automatic login to EZWall</p> <p>Automatic login to Windows</p> <p>Automatically display selected window on top</p> <p>Play video with set or adaptive stream type</p>
Help	User manual
Language	Chinese、 English
Environment	
OS and Min. Requirements	<p>OS: 32-bit or 64-bit Microsoft Windows 7, 8, 10</p> <p>CPU: Intel Core i5 2.3GHz or higher</p> <p>RAM: 4GB or higher</p>

# Unlimited New View

**Zhejiang Uniview Technologies Co., Ltd.**

 <http://www.uniview.com>

 [overseasbusiness@uniview.com](mailto:overseasbusiness@uniview.com); [globalsupport@uniview.com](mailto:globalsupport@uniview.com)

 No. 369, Xietong Road, Xixing Sub-district, Binjiang District, Hangzhou City, 310051, Zhejiang Province, China



©2023-2025 Zhejiang Uniview Technologies Co., Ltd. All rights reserved.

\*Product specifications and availability are subject to change without notice.

Despite our best efforts, technical or typographical errors may exist in this document. Uniview cannot be held responsible for any such errors and reserves the right to change the contents of this document without prior notice.