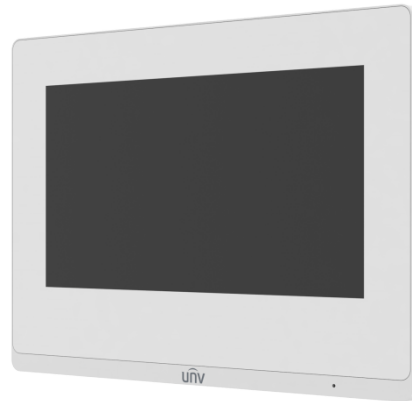


Indoor Station

OEI-372S-H-W-Z



Overview

OEI-372S-H-W-Z indoor station is one of the terminals in the digital building intercom system, with functions of video intercom, security alarm, network camera monitoring, etc., providing a safe and comfortable living environment for residents. It can be widely used in building systems such as smart communities, , and parks.

Features

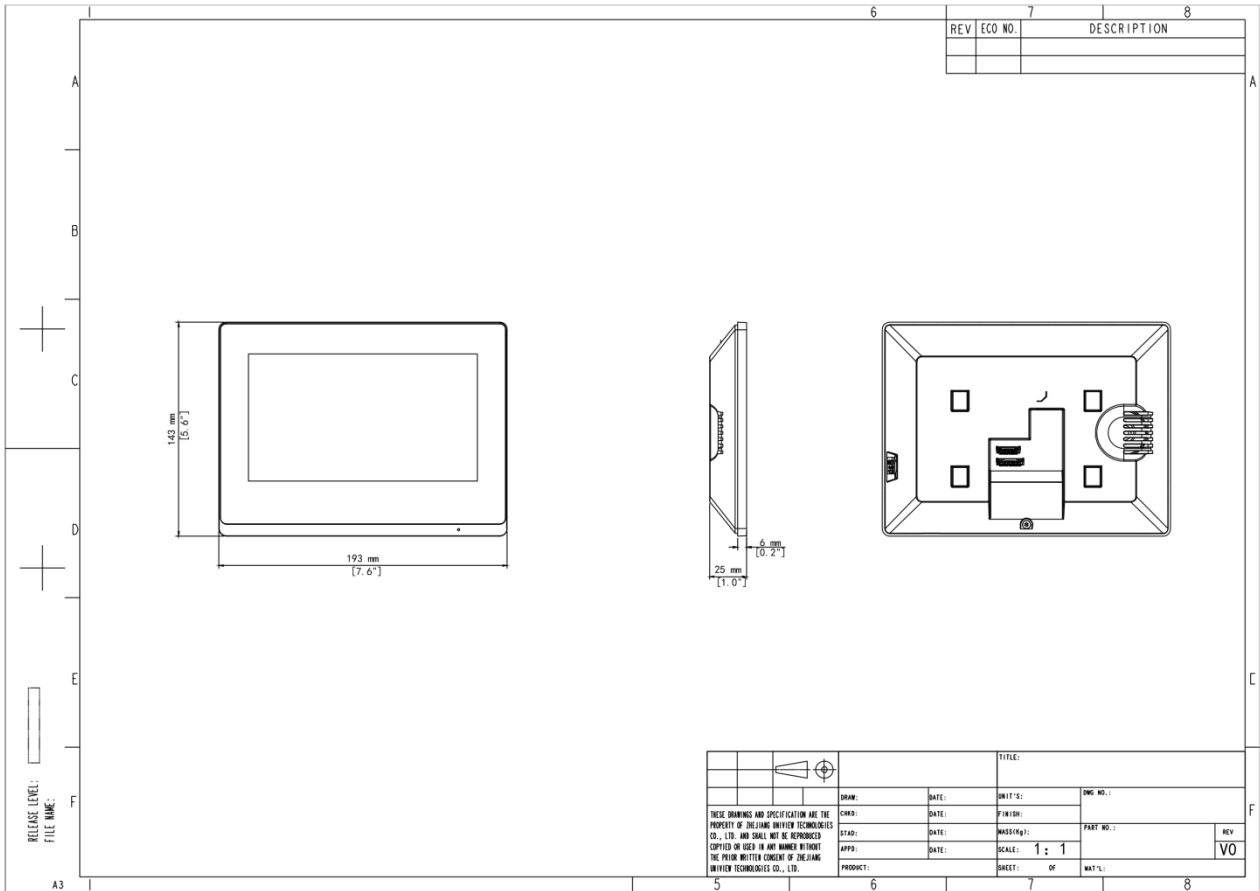
- Rugged ABS casing and glass panel.
- 1024*600 HD touch screen.
- Batch configuration transfer.
- Remote opening of linked door stations, one-key opening.
- Network camera monitoring, security alarm.

Specifications

Model	OEI-372S-H-W-Z
Hardware Specification	
Power Supply	DC12V±25%,IEEE802.3af, Standard PoE
Power Consumption	<10W

Screen	7-inch ultra-thin TFT LCD screen
Screen Resolution	1024×600
Operation System	Linux
Audio Quality	Noise suppression,echo cancellation and AGC
Audio Input	1 built-in omnidirectional microphone
Audio Output	1 built-in speaker
Audio Compression Standard	MP3 G711
Audio Compression Bitrate	128Kbps
Interface	Power*1, network*1, RS485*1, IO output*2, IO input*8, TF card slot*1
Network	100Mbps network port, supports IEEE802.3af PoE power supply,WIFI
Weight	360g
Dimensions (L x W x H)	193mm×143mm×25mm
Operating Environment	-10°C to +55°C, 10% to 90%, non-condensing, indoor
Basic Business	
Protocol	UNV private protocol

Dimensions



Zhejiang Uniview Technologies Co., Ltd.

No. 369, Xietong Road, Xixing Sub-district, Binjiang District, Hangzhou City, 310051, Zhejiang Province, China

Email: overseasbusiness@uniview.com; globalsupport@uniview.com

<http://www.uniview.com>

©2024-2025 Zhejiang Uniview Technologies Co., Ltd. All rights reserved.

*Product specifications and availability are subject to change without notice.

*Despite our best efforts, technical or typographical errors may exist in this document. Uniview cannot be held responsible for any such errors and reserves the right to change the contents of this document without prior notice.