

# UNV VMS-B180-A Datasheet\_V2.2-EN

## VMS-B180-A



## Overview

VMS-B180-A is a video management server intended for small and medium-sized projects. It can connect and manage various devices including IPC, NVR, smart device, smart recognition access control device, entrance & exit device, cloud device, decoder, network keyboard, access control, and alarm control. VMS-B180-A is easy to deploy, scalable and stable, and it is widely applicable in LAN-based applications such as communities, buildings, campuses, hotels, venues, and WAN-based applications such as networked supermarkets.

## Features

- Powerful connection: 250 devices, 500 channels
- Unified management: IPC, NVR, smart device, smart recognition access control device, entrance & exit device, cloud device, decoder, network keyboard, access control, alarm control, etc.
- High bandwidths: 512Mbps incoming bandwidth, 384Mbps forwarding bandwidth
- Strong compatibility: Standard ONVIF, VSS, VIID, and RTSP
- Rich functionality: Basic functions including live view, playback, sequence, view, video wall, e-map, two-way audio, broadcast, alarm linkage; smart functions including perimeter protection, person detection, person recognition, LPR, entrance & exit management, access control, basic attendance management, mixed-traffic detection, people counting, and data search
- Flexible access: Local client (C/S and B/S), PC client (C/S and B/S), and mobile client (iOS and Android)
- Stability and reliability: Embedded Linux OS, 802.1x authentication, ARP protection, HTTPS, SSH enabling/disabling, network fault tolerance, load balancing, multi-IP configuration, secure password, and IP address filtering
- Operation and maintenance: Provide a comprehensive management dashboard, server status, device/channel online status, HDD status, online users, bandwidth usage, packet loss rate, log search, etc.
- Abundant Interfaces: 4 Gigabit Ethernet interfaces, 24 alarm inputs, 8 alarm outputs, 4 USB3.0 interfaces, 1 HDMI interface, and 1 VGA interface

# Specifications

Model	VMS-B180-A
Live view	
Live view	<p>Play live video by channel or view.</p> <p>1/3/4/5/6/7/8/9/10/13/16/17/25/32/36/64 image display on single screen (64-image display is not available on the local client).</p> <p>Custom window layout.</p> <p>3/7 window layout in corridor mode;</p> <p>Up to 3 auxiliary monitors (not support on local client);</p> <p>Supports view, sequence, snapshot, digital zoom, PTZ control, patrol, fisheye, 5ePTZ, panoramic linkage, multi-sensor mode, instant playback, recording, watermark, etc.</p>
Playback	
Playback	<p>Play recordings saved on VMS or NVR.</p> <p>Playback types: normal recording, tagged recording, locked recording, smart recording playback, event recording, VCA recording.</p> <p>Normal recording playback supports 1/3/4/5/6/7/8/9/10/13/16 window layout.</p> <p>Max 16-channel synchronous playback on a single client (depending on NVR's stream output performance).</p> <p>Playback speeds: -256x, -128x, -64x, -32x, -16x, -8x, -4x, -2x, -1x, 1/4x, 1/2x, 1x, 2x, 4x, 8x, 16x, 32x, 64x, 128x, 256x (depending on NVR's stream output performance)</p> <p>Supports snapshot, digital zoom, clipping, locking, tagging, rewinding/forwarding 30 seconds, zooming in/out on the timeline, synchronous playback, recording preview on timeline, watermark, etc.</p> <p>Download recordings by file, time, etc.</p>
E-map	
E-map	<p>Supports local and online (AMAP) maps; map files support jpg, png, and bmp formats.</p> <p>Add, delete, edit, and search maps, hot spots (video channel, alarm input, access control) and hot zones.</p> <p>Allows user to choose or customize hot spot icons.</p> <p>Live view (max 4 channels) and playback (max 16 channels) on map.</p> <p>Blinking alarm on map; view/clear alarms.</p> <p>800MB storage space for map resources, max 7 layers of maps.</p>
Video wall	
Video wall	<p>Supports multiple models of decoding devices to create video wall.</p> <p>Allows user to add, delete, edit, search video wall; editable information includes video wall name, size, resolution, bind/unbind decoding channels.</p> <p>Live view, playback, and sequence display on video wall.</p> <p>Save settings as a scene for quick restoration of settings when needed.</p> <p>Play signal source on video wall, virtual LED configuration, screen on/off control.</p>
Alarm configuration	
Alarm management	<p>Alarm subscription, alarm level customization, alarm time template, email contacts management (BS client).</p>

	<p>Alarm plan configuration: add/delete/edit/search/enable/disable alarm plan; configure alarm linkage actions: live view, goto preset, alarm output, alarm to video wall (BS client also supports email and buzzer).</p> <p>Alarm records search: realtime alarm records, history alarm records; history alarm records support search by alarm source, time, alarm status, alarm time, alarm level.</p>
<b>Audio</b>	
Two-way audio	<p>Choose a device for two-way audio.</p> <p>The live video from the device is displayed.</p> <p>User can start/stop two-way audio, adjust sound volume of MIC and speaker.</p> <p>The status bar shows two-way audio status.</p> <p>(Not available on the local client)</p>
Broadcast	<p>Add, delete broadcast group members, start/stop broadcast.</p> <p>Choose one audio channel from the broadcast group to play audio.</p> <p>Adjust local input and output sound volume.</p> <p>(Not available on the local client)</p>
<b>Access control management</b>	
Manual access control	Search doors, view status, open/close doors.
Door entry/exit records	Search entry/exit records, view status, reset/export.
Visitor info management	<p>Sign in/out visitors, configure permission group/blocklist.</p> <p>Edit visitor information, view visitor status.</p>
Access control monitoring	Manage the blocklist library and use it for monitoring.
Blocklist alarm records	Search, view status, reset/export.
Attendance management	Search attendance statistics by time range, department, name, person ID; export search results.
<b>Face detection</b>	
Face library management	<p>Add, delete, edit, and search face libraries; max. 128 face libraries.</p> <p>Add, delete, assign, remove, import, export faces in batches, search faces by name, ID card number, gender, etc.</p>
Face monitoring management	<p>Monitoring type: match alarm, not match alarm.</p> <p>(Alarm records can be searched in the data search module)</p>
Face realtime monitoring	<p>View live video of monitoring cameras, snapshots and comparison records.</p> <p>(Passing people records can be searched in the data search module).</p>
<b>Checkpoint monitoring</b>	
Vehicle library management for checkpoint	<p>Add, delete, edit, search vehicle library information, max 16 vehicle libraries.</p> <p>Add, delete, assign, remove, import, and export vehicles in batches, search vehicles by plate number, plate type, vehicle color, plate color, etc.</p>
Vehicle monitoring	<p>Cause of monitoring: robbed vehicle, stolen vehicle, suspect vehicle, traffic violation, emergency control.</p> <p>(Alarm records can be searched in the data search module)</p>
Checkpoint realtime monitoring	<p>View live video of monitoring cameras.</p> <p>(Passing vehicle records can be searched in data search module).</p>
<b>People counting</b>	
Statistical resource management	Supports filtering areas and channels by keyword.

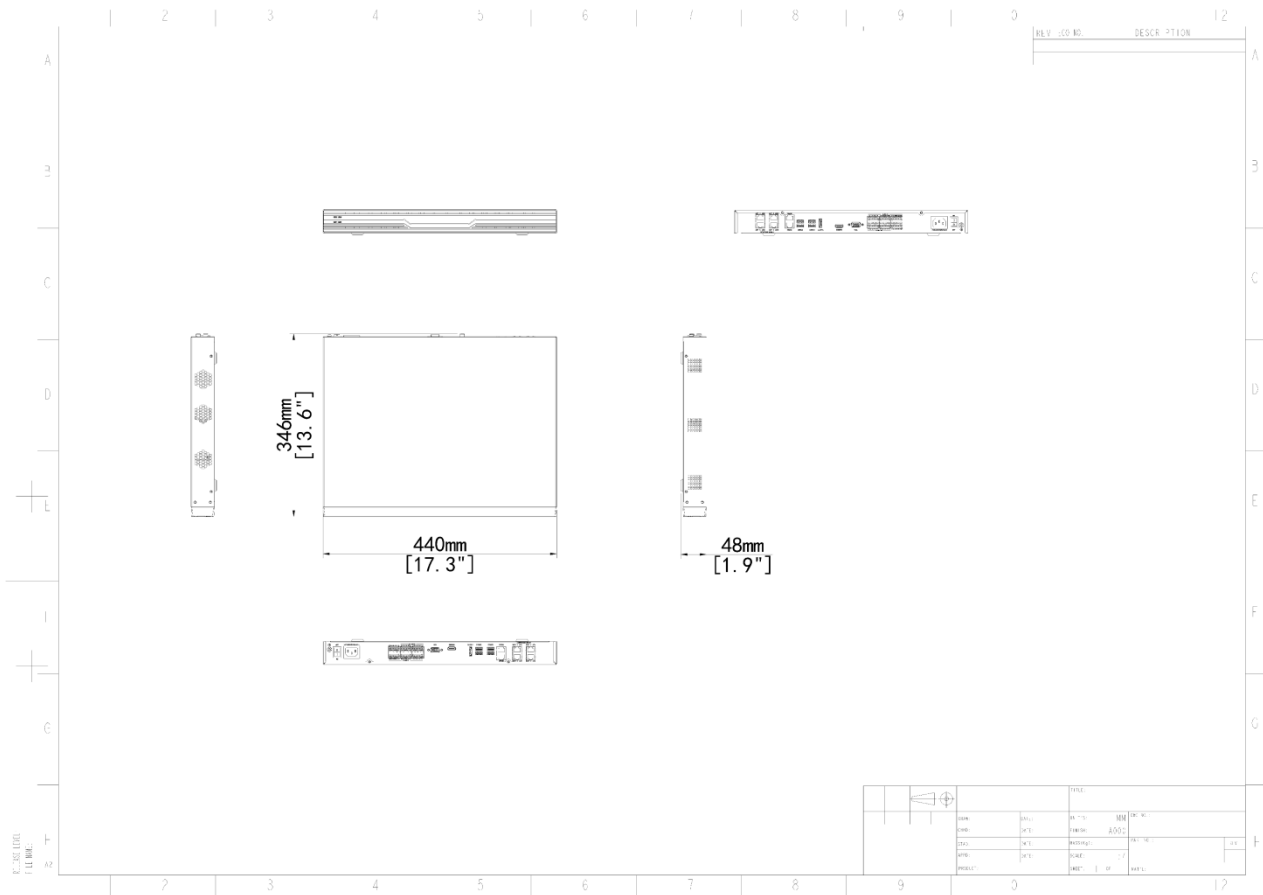
People counting area	<p>Add, edit, delete people counting areas; max 8 detection areas, each area includes up to 32 channels.</p> <p>Configure alarms, area name, push cycle, people present alarm thresholds (critical/major/minor), and channels.</p>
Crowd density detection area	<p>Add, edit, delete crowd density monitoring areas, max 16 areas, each area allows one video channel.</p> <p>Configure alarms, area name, push cycle, crowd density alarm thresholds (critical/major/minor), and channels.</p>
Area preview	<p>Double-click a channel in the people counting area to view the live video in the 4-window area.</p>
Realtime statistics	<p>Displays counting results (people in/out/staying/how many more allowed) and access status on the right side and updates in real time.</p> <p>Crowd density (current number of people, how many more allowed), area status.</p>
Reports and statistics	<p>Count by minute/hour/day/month.</p> <p>Support line chart and column chart display, and display entering/leaving/staying statistics separately or in combination.</p> <p>Display entering/leaving/staying statistics of a certain time period or of a channel, export counting statistics.</p>
<b>Mixed-traffic detection</b>	
Mixed-traffic detection	<p>Real-time monitoring and snapshot record display for motor vehicle/non-motor vehicle/pedestrian.</p> <p>Face detection records: search by channel, time, gender, age, etc.</p> <p>Pedestrian detection records: search by channel, time, gender, age, upper garment style/color, lower garment style/color, shoes, and backpack style.</p> <p>Non-motor vehicle detection records: search by channel, time, vehicle type, driving direction, speed; associated facial feature information.</p> <p>Motor vehicle detection records: search by channel, time, plate number, vehicle type, plate color, plate type, color logo, driving direction, speed, and vehicle color.</p>
<b>Behavior search</b>	
Device data search	<p>Search VCA alarm snapshots and recordings by criteria including time range and alarm type (cross line detection, intrusion detection)</p>
VMS data search	<p>Search alarm snapshots and recordings by all/pedestrians/non-motor vehicles/motor vehicles, time range, and alarm type (cross line detection, intrusion detection, enter area, leave area).</p>
<b>Data search</b>	
Face search	<p>Search by attribute, event, and by image:</p> <ol style="list-style-type: none"> <li>Search by attribute:             <ol style="list-style-type: none"> <li>Search conditions: channel name, snapshot time, gender, age, etc; search records support search by image.</li> <li>View alarm image and recording, object features.</li> <li>Data export.</li> </ol> </li> <li>Search by event:             <ol style="list-style-type: none"> <li>Search conditions: monitoring type (match alarm, not match alarm), alarm source, alarm time, name, ID number, alarm source, gender, etc.</li> <li>View alarm image and recording, object features.</li> <li>Data export.</li> </ol> </li> </ol>

	3. Search by image: Search people pass-through records on NVR and search for an image in a face library on VMS using a face library image (VMS) or a local uploaded face image; view alarm image and recording.
Pedestrian search	1. Search conditions: channel name, snapshot time, gender, age, upper garment style/color, lower garment style/color, shoes, backpack style. View alarm images and object features. Data export.
Motor vehicle search	Search by attribute and event: 1. Search by attribute: (1) Search conditions: channel name, snapshot time, plate number, vehicle type, plate color, plate type, vehicle logo, driving direction, speed, vehicle color. (2) View alarm image and recording, object features. (3) Data export. 2. Search by event: (1) Search conditions: monitoring type (match alarm, not match alarm), alarm source, alarm time, plate number, plate color, monitoring cause, vehicle color. (2) View alarm image and recording, object features. (3) Data export.
Non-motor vehicle search	Search conditions: channel name, snapshot time, vehicle type, driving direction, speed. View alarm images and object features. Data export.
O and M statistics	
Log search	View, acknowledge alarm logs, view operation logs
Storage performance	
Storage performance	Network disk: Supports external network hard disk (IP SAN) storage; supports configuration of recording schedules for up to 100 channels; recording schedule only supports the Schedule type
Management performance	
Total device management capability	250
Total channel management capability	500
Cloud device management capability	250
GB/T28181 device management capability	100
Onvif device management capability	250
Smart encoding device management capability	100
Access control device management capability	128
Decoding device management capability	30

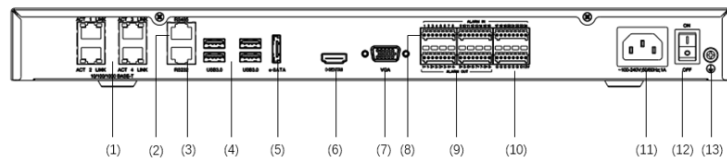
EZAgent management capability	20
Network keyboard management capability	50
Network disk	8
Security gateway device management capability	128
User management capability	500
Concurrent online user management capability	50
Replica server management capability	Not support
<b>Stream performance</b>	
Incoming bandwidth	512Mbps
Outgoing bandwidth	384Mbps
<b>Image performance</b>	
Number of smart image storage streams	256 channels
Image push performance	100 images per second
<b>Alarm performance</b>	
Alarm receiving and forwarding performance	100 alarms per second
<b>Data storage performance</b>	
Max storage for alarm logs	20W
Max storage for operation logs	20W
Max storage for face snapshot records	300W
Max storage for face alarm records	300W
Max storage for passing vehicles	300W
Max storage for structured vehicle/pedestrian records	300W
Max storage for access control records	300W
<b>Operating temperature</b>	
Operating environment temperature	-10°C to 55°C (recommended: 0°C to 50°C)
<b>Operating humidity</b>	
Operating environment humidity	10RH% to 90RH% (noncondensing)
<b>Operating system</b>	
Operating system	Linux

<b>RAM</b>	
RAM	4GB
<b>HDD</b>	
HDD	1 (No HDD is included at delivery)
<b>Interface</b>	
USB	4*USB3.0
VGA interface	1
HDMI interface	1
RS485	1
RS232	1
Alarm	24 in, 8 out
Storage expansion interface	/
<b>Network interface</b>	
Network interface	GE × 4
<b>Power</b>	
12V DC output	1
Primary power input	/
Power	100V to 240V AC input, 50Hz/60Hz
Expansion power module slot (PSU1)	/
<b>Total power consumption</b>	
Total power consumption	Max. 40W
<b>Physical size</b>	
Dimensions (with front panel) (H x D x W)	48mm×345.5mm×440mm/1U (front panel is not removable)
<b>Weight</b>	
Weight	≤4kg (without HDD)
<b>Client computer requirements</b>	
Client computer requirements	<p>64-bit version:                      OS: Microsoft Windows 7/Windows 8/Windows 10, 64-bit                      CPU: Intel Core i5 3.1 GHz or higher                      RAM: 4GB or higher</p> <p>32-bit version:                      OS: Microsoft Windows 7/Windows 8/Windows10, 32/64-bit                      CPU: Intel Pentium IV 3.0 GHz or higher, 4 Cores, 3.0GHz is recommended                      RAM: 2GB or higher</p> <p>Note: 64-bit operating system needs to be compatible with the 32-bit version software</p> <p>Mac version:                      OS: Mac OS 10.11 or higher                      CPU: Intel Core i5 3.1 GHz or higher                      RAM: 4GB or higher</p>

# Dimensions



# Rear Panel



(1) Gigabit Ethernet interface <sup>1)</sup>	(2) RS485 <sup>2)</sup>	(3) RS232 <sup>2)</sup>
(4) USB3.0 <sup>2)</sup>	(5) eSATA interface <sup>2)</sup>	(6) HDMI output <sup>2)</sup>
(7) VGA output <sup>2)</sup>	(8) Alarm input <sup>2)</sup>	(9) Alarm output <sup>2)</sup>
(10) 12V DC output <sup>2)</sup>	(11) Power interface <sup>2)</sup>	(12) Power button <sup>2)</sup>
(13) Grounding <sup>2)</sup>		

# Unlimited New View

**Zhejiang Uniview Technologies Co., Ltd.**



<http://www.uniview.com>



[overseasbusiness@uniview.com](mailto:overseasbusiness@uniview.com); [globalsupport@uniview.com](mailto:globalsupport@uniview.com)



No. 369, Xietong Road, Xixing Sub-district, Binjiang District, Hangzhou City, 310051, Zhejiang Province, China



©2023-2025 Zhejiang Uniview Technologies Co., Ltd. All rights reserved.

\*Product specifications and availability are subject to change without notice.

Despite our best efforts, technical or typographical errors may exist in this document. Uniview cannot be held responsible for any such errors and reserves the right to change the contents of this document without prior notice.