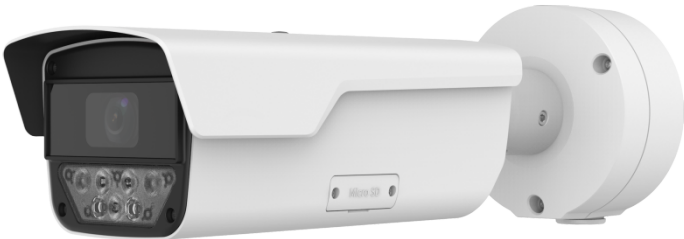


4MP LPR Bullet Camera (PoE, H.265, IR (warm light), NB)

PKC2641-Z28(Z80, Z100)-(IR)-P-NB



4 MP

Starlight

H.265

PoE

IP67

IK10

ONVIF

ANPR

Features

- 1/1.8" progressive scan CMOS.
- Up to 2688 × 1520 resolution with real-time video.
- Supports Wise-ISP for enhanced image quality.
- Automatic gain control, white balance, and WDR for various light conditions.
- Video frame rate upgraded to 60 fps.
- Built-in vehicle and license plate recognition algorithm can recognize standard license plates of multiple countries.
- Supports plate allowlist and blocklist configuration.
- Supports Micro SD cards of up to 512GB.
- IP67 and IK10 protection.

Specifications

Model	PKC2641-Z100-P-NB	PKC2641-Z28-P-NB	PKC2641-Z28-IR-P-NB	PKC2641-Z80-P-NB	PKC2641-Z80-IR-P-NB	PKC2641-Z100-IR-P-NB
Camera						
Sensor	1/1.8-inch 4MP CMOS					

Focal length	10 to 50mm	2.8 to 12mm	2.8 to 12mm	8 to 32mm	8 to 32mm	10 to 50mm
Shutter	Auto, range: 1/500 to 1/100000s	Auto, range: 1/200 to 1/100000s	Auto, range: 1/200 to 1/100000s	Auto, range: 1/500 to 1/100000s	Auto, range: 1/500 to 1/100000s	Auto, range: 1/500 to 1/100000s
Minimum illumination	0.002lux (F1.7)	0.0005lux (F1.4)	0.0005lux (F1.4)	0.002lux (F1.7)	0.002lux (F1.7)	0.002lux (F1.7)
FOV	Horizontal FOV: 34.3° to 8.7°, Vertical FOV: 19.9° to 4.8°, Diagonal FOV: 40.5° to 9.8°	Horizontal FOV: 106.4° to 50.3°, Vertical FOV: 57.1° to 27.8°, Diagonal FOV: 127.4° to 57.3°	Horizontal FOV: 106.4° to 50.3°, Vertical FOV: 57.1° to 27.8°, Diagonal FOV: 127.4° to 57.3°	Horizontal FOV: 42° to 15.5°, Vertical FOV: 23.1° to 8.8°, Diagonal FOV: 48.5° to 18.3°	Horizontal FOV: 42° to 15.5°, Vertical FOV: 23.1° to 8.8°, Diagonal FOV: 48.5° to 18.3°	Horizontal FOV: 34.3° to 8.7°, Vertical FOV: 19.9° to 4.8°, Diagonal FOV: 40.5° to 9.8°
WDR	120 dB					
S/N	> 50 dB					
Image						
Image collection format	2688*1520@60,2688*1520@50,2688*1520@30 (default),2688*1520@25					
Frame rate	60, 50, 30 (default), 25, 22, 20, 18, 16, 15, 12.5, 10, 8, 6, 5, 4, 3, 2, 1					
Video compression	H.264 (default), H.265					
ROI	Supports up to 8 regions					
HLC	Support					
BLC	Support					
Defog	Digital defog					
Digital Noise Reduction	3D DNR					
Video OSD	Supports 8 overlay areas and allows contents including date, time, date&time, zoom ratio, custom contents					
Image OSD	Supports 8 overlay areas and allows contents including time, license plate number, device ID, camera ID, allowlist, image authentication ID, custom contents (3 items), location					
Display Parameters						
Resolution	Main stream: 2688*1520, 1080P (default), 720P, D1; Sub stream: 720P (default), D1, 2CIF, CIF; Third stream: D1 (default), 2CIF, CIF					
Smart						

Application scenario	≤ 80km/h for regular roads; Camera with the focal length of 10 to 50mm can be used for regular roads	≤ 30km/h for entrances and exits, ≤ 80km/h for regular roads; Supports simultaneous application to road and entry/exit scenes without switching	≤ 30km/h for entrances and exits, ≤ 80km/h for regular roads; Supports simultaneous application to road and entry/exit scenes without switching	≤ 80km/h for regular roads; Camera with the focal length of 8 to 32mm can be used for regular roads	≤ 80km/h for regular roads; Camera with the focal length of 8 to 32mm can be used for regular roads	≤ 80km/h for regular roads; Camera with the focal length of 10 to 50mm can be used for regular roads
Vehicle detection mode	Supports video detection					
License plate number recognition	Supports recognition of license plates with numbers and letters by default					
List configuration	Supports allowlist and blocklist configuration, each list allows 20,000 items Supports import, export, add, and delete operations					
Barrier opening policy	Open barrier only for the recognized vehicles Open barrier for all vehicles Open barrier only for vehicles on the allowlist Open barrier for vehicles not on the blocklist Configurable Boolean output ID					
Storage						
Edge storage	Supports ANR with a Micro SD card, up to 512GB					
Structure						
Illumination	Built-in integrated illumination module, including 5 warm light LEDs, 50m illumination distance, automatic on/off control	Built-in integrated illumination module, including 4 warm light LEDs, 50m illumination distance, automatic on/off control	Built-in integrated illumination module, including 4 IR LEDs, 50m illumination distance, automatic on/off control	Built-in integrated illumination module, including 5 warm light LEDs, 50m illumination distance, automatic on/off control	Built-in integrated illumination module, including 5 IR LEDs, 50m illumination distance, automatic on/off control	Built-in integrated illumination module, including 5 IR LEDs, 50m illumination distance, automatic on/off control
Bracket	3-axis mounting bracket					
Junction box	The camera comes with a junction box for storing tail cable					

Network

Protocols	IGMP,IPv6,ICMP,ARP,TCP,UDP,DHCP,PPPoE,RTSP,DNS,DDNS,NTP,UPnP,HTTP,HTTPS,802.1x,SNMP,QoS,SSL/TLS,SSH,I Pv4
Compatibl e Integratio n	ONVIF (Profile S, Profile G, Profile T),SDK, API

Interface

Network interface	1×10M/100M RJ45					
Serial port	2 × RS485					
Boolean output	2 relay outputs, withstand voltage: AC 125V/0.3A, DC 30V/1A	2 relay output, withstand voltage: AC 125V/0.3A, DC 30V/1A	2 relay output, withstand voltage: AC 125V/0.3A, DC 30V/1A	2 relay outputs, withstand voltage: AC 125V/0.3A, DC 30V/1A	2 relay outputs, withstand voltage: AC 125V/0.3A, DC 30V/1A	2 relay outputs, withstand voltage: AC 125V/0.3A, DC 30V/1A
Boolean input	2 x input, supports level (up to DC 5V) and switch signal					
Audio interface	1 × audio input, 1 × audio output					
Storage interface	1 × Micro SD card slot					
Reset button	Support					

Hardware Specification

Wiegand Interface	Supports Wiegand output					
----------------------	-------------------------	--	--	--	--	--

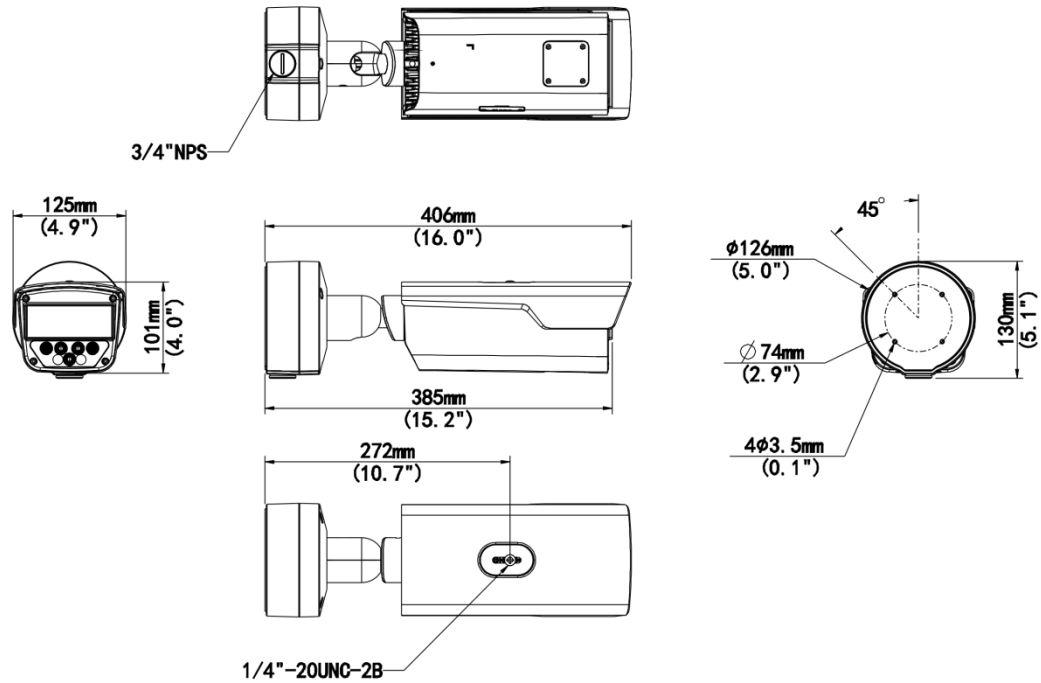
General

Power supply	DC12V + 25% - 25% Max. power consumption: 20W Supports PoE (802.3at, class 4)					
Dimension s (L×W×H)	406mm x 126mm x 130mm					
Weight	2.02kg	1.87kg	1.87kg	1.91kg	1.91kg	2.02kg
Operating environme nt	-40°C to 60°C, ≤90% RH					
Ingress protection	IP67, IK10					
Heater	N/A					

Compliance

NDAA Compliant	Support					
-------------------	---------	--	--	--	--	--

Dimensions



Accessories

TR-UP06-C-IN

Pole Mounting Bracket for Bullet
Junction Box Only



Ordering Info

Product Model	Description
PKC2641-Z28-P-NB	4MP LPR Bullet Camera (2.8 to 12mm, PoE, H.265, warm light, NB)
PKC2641-Z80-P-NB	4MP LPR Bullet Camera (8 to 32mm, PoE, H.265, warm light, NB)
PKC2641-Z100-P-NB	4MP LPR Bullet Camera (10 to 50mm, PoE, H.265, warm light, NB)

PKC2641-Z28-IR-P-NB	4MP LPR Bullet Camera (2.8 to 12mm, PoE, H.265, IR, NB)
PKC2641-Z80-IR-P-NB	4MP LPR Bullet Camera (8 to 32mm, PoE, H.265, IR, NB)
PKC2641-Z100-IR-P-NB	4MP LPR Bullet Camera (10 to 50mm, PoE, H.265, IR, NB)