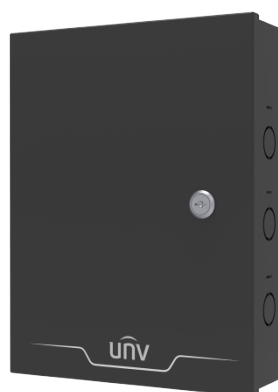


Single Door Recognition Access Control Controller

OER-SR12



Overview

OER-SR12 are high-performance and highly reliable access controllers. The products provide TCP/IP wired network communication interfaces and specialized access control and management functions to fit various complex access control scenarios.

Features

- TCP/IP communication with secure reliability.
- Large capacity: Supports up to 42,000 cards and 200,000 events.
- Different mounting holes for easy installation.
- Supports remote upgrade.
- Supports real-time monitoring configuration.
- Supports issuing cards using card readers.

Specifications

| | |
|---|----------------------|
| Model | OER-SR12 |
| Hardware Specification | |
| Dimensions (L x W x H) | 235mm x 305mm x 76mm |
| Weight | 2.2KG |
| Door Control | 1 door |
| Card Reader | 2 |
| Wiegand Input Interface (Max DC14V Withstand Voltage) | 2 |
| Wiegand Format | WG18/26/34/66 |

| | |
|----------------------------|-------------------------------|
| Relay Output | 1 set (7A) |
| Door Magnetic Port | 1 |
| Fire Module Expansion Port | 1 |
| Operating Environment | Indoor (-10°C to +65°C) |
| Power Supply | AC 100V to 240V(50Hz or 60Hz) |
| Mount | Wall mount |
| Basic Business | |
| Communication Mode | TCP/IP |
| Specification Index | |
| Card Capacity | 42000 |
| Event Capacity | 200000 |

Ordering Info

| Product Model | Description |
|---------------|---|
| OER-SR12 | Single Door Recognition Access Control Controller |

Accessories

OEC-R3H-M

Wall Mounted Mifare Card Reader



OEC-R3H-MK

Wall Mounted Mifare Keyboard Card Reader



OEA-ML12-280

Single Door Electromagnetic Lock 280KG



OEA-ML22-280

Double Door Electromagnetic Lock 280KG



OEP-GP2

Open Door Button



OEP-GM5

Open Door Button



OEP-GM6-R

Infrared Induction Switch Button



OEP-GP6

Emergency Exit Button

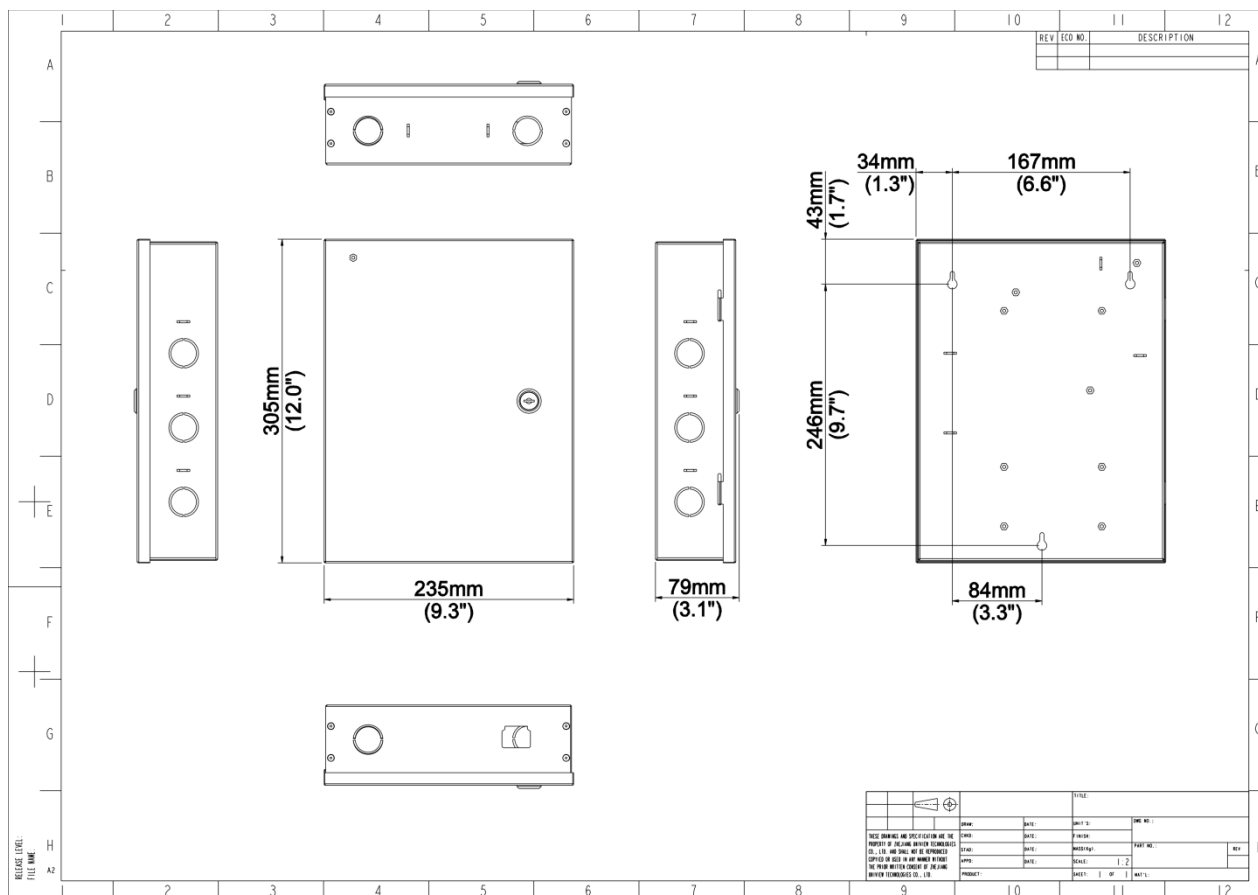


OEK-M11

Mifare 卡



Dimensions



Notes

- Supports 100 Mbps unmanaged switches only.

Zhejiang Uniview Technologies Co., Ltd.

No. 369, Xietong Road, Xixing Sub-district, Binjiang District, Hangzhou City, 310051, Zhejiang Province, China

Email: overseasbusiness@uniview.com; globalsupport@uniview.com

<http://www.uniview.com>

©2025 Zhejiang Uniview Technologies Co., Ltd. All rights reserved.

*Product specifications and availability are subject to change without notice.

*Despite our best efforts, technical or typographical errors may exist in this document. Uniview cannot be held responsible for any such errors and reserves the right to change the contents of this document without prior notice.