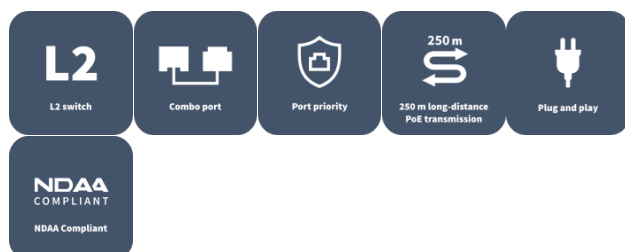


Ethernet Low Power PoE Switches

NSW2020-16T1GT1GC-LPOE-IN



Features

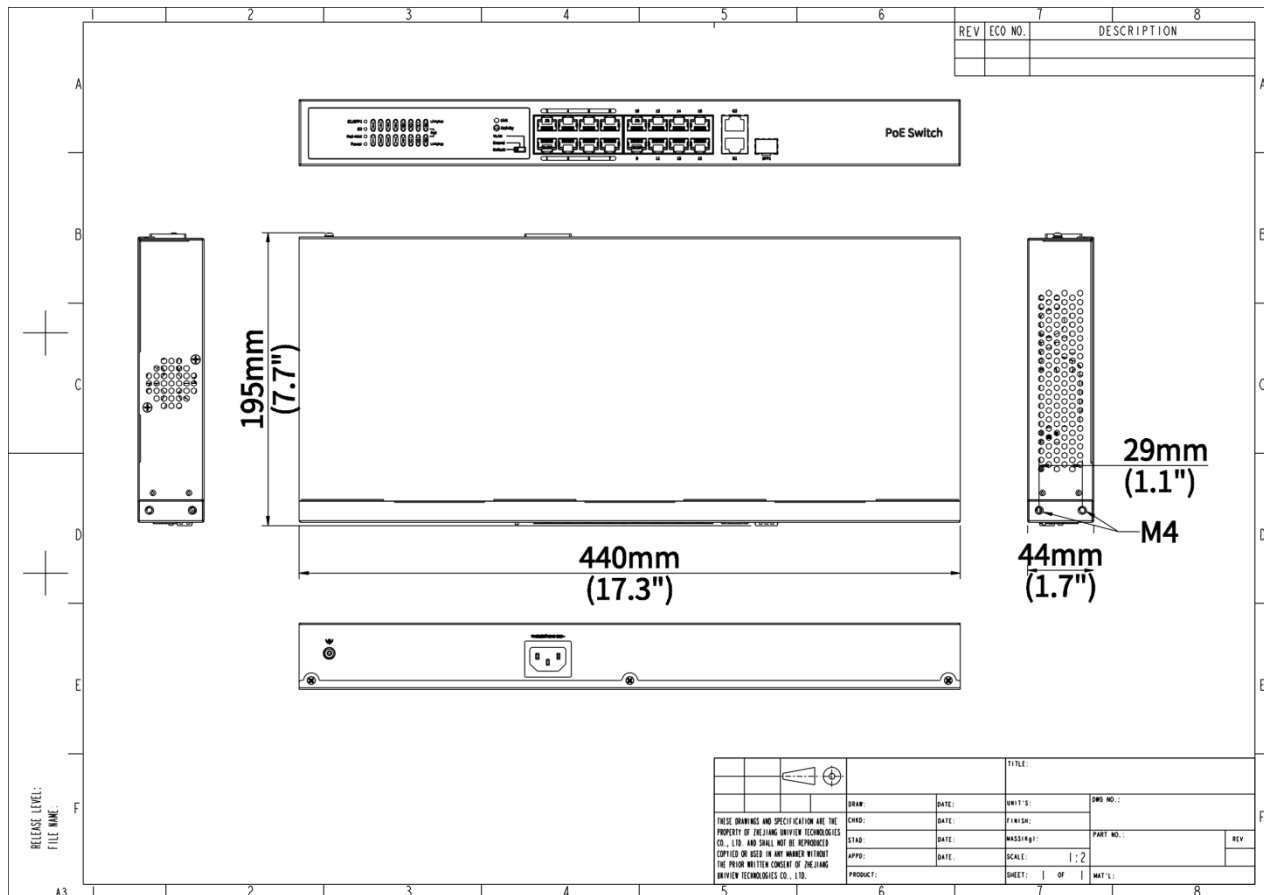
- Multiple working modes to address your business needs: Default(Normal mode), VLAN(Secure mode), EXTEND(Surveillance mode)
- Support port traffic control
- Support for secure mode, all downlink ports can communicate only with uplink ports
- Up to 250m transmission distance on surveillance mode
- Support buffer optimization
- All metal housing, safe and reliable

Specifications

Model	NSW2020-16T1GT1GC-LPOE-IN
Hardware Specification	
Ports Type	16×100Mbps PoE ports (RJ45)+ 1×1000Mbps Gigaethernet ports +1×1000Mbps Combo ports
Switching capacity	7.2 Gbps
Packet Buffer	4 M bit
Forwarding performance	5.36Mpps
Power Supply	AC: 100 to 240V, 50/60Hz
MAC	16K
PoE Mode	ModeB (4578)
Max.PoE Power	Max capacity:150W

	Max capacity for single port: 30W
Prior Ports	1 to 8
Standards	IEEE802.3, IEEE802.3u, IEEE802.3z, IEEE802.3ab, IEEE802.3x, IEEE802.3af, IEEE802.3at, IEEE802.3az
Cooling Fans	0
Max.Power	165W
Operating Temperature	0°C to 45°C (32°F to 113°F)
Operating Humidity	10% to 90% (noncondensing)
Indicator	<p>POWER:</p> <p>Steady on: AC input is normal</p> <p>Off: No AC input</p> <p>PoE:</p> <p>Off: No PoE power supply</p> <p>Steady on: PoE power supply is normal</p> <p>PoE-MAX:</p> <p>off : The POE power supply power of the whole machine is less than 80% of the specification</p> <p>Steady on : The POE power supply power of the whole machine is greater than 85% of the specification</p> <p>LINK/ACT:</p> <p>Off: No link</p> <p>Steady on: Linked</p> <p>Flashing: Transmitting data</p>
Dimensions (W×D×H)	440*195*44mm
Weight	1.99KG
Working Mode	<p>Default (Normal mode) : All ports can communicate with each other, Extend (Surveillance mode): Transmission distance up to 250 meters. Downlink ports can communicate only with uplink ports, VLAN (Secure mode): Downlink ports can communicate only with uplink ports. Enabling PD keepalive function, the switch will restart the IPC via PoE power when the IPC sends no message in a period of time</p>
Compliance	
NDAA Compliant	Support

Dimensions



Zhejiang Uniview Technologies Co., Ltd.



<http://www.uniview.com>



overseasbusiness@uniview.com; globalsupport@uniview.com



No. 369, Xietong Road, Xixing Sub-district, Binjiang District, Hangzhou City, 310051, Zhejiang Province, China



©2023-2025 Zhejiang Uniview Technologies Co., Ltd. All rights reserved.

*Product specifications and availability are subject to change without notice.

*Despite our best efforts, technical or typographical errors may exist in this document.

Uniview cannot be held responsible for any such errors and reserves the right to change the contents of this document without prior notice.