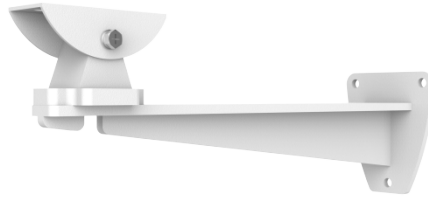


TR-WM06-I-IN Housing Wall Mount Bracket

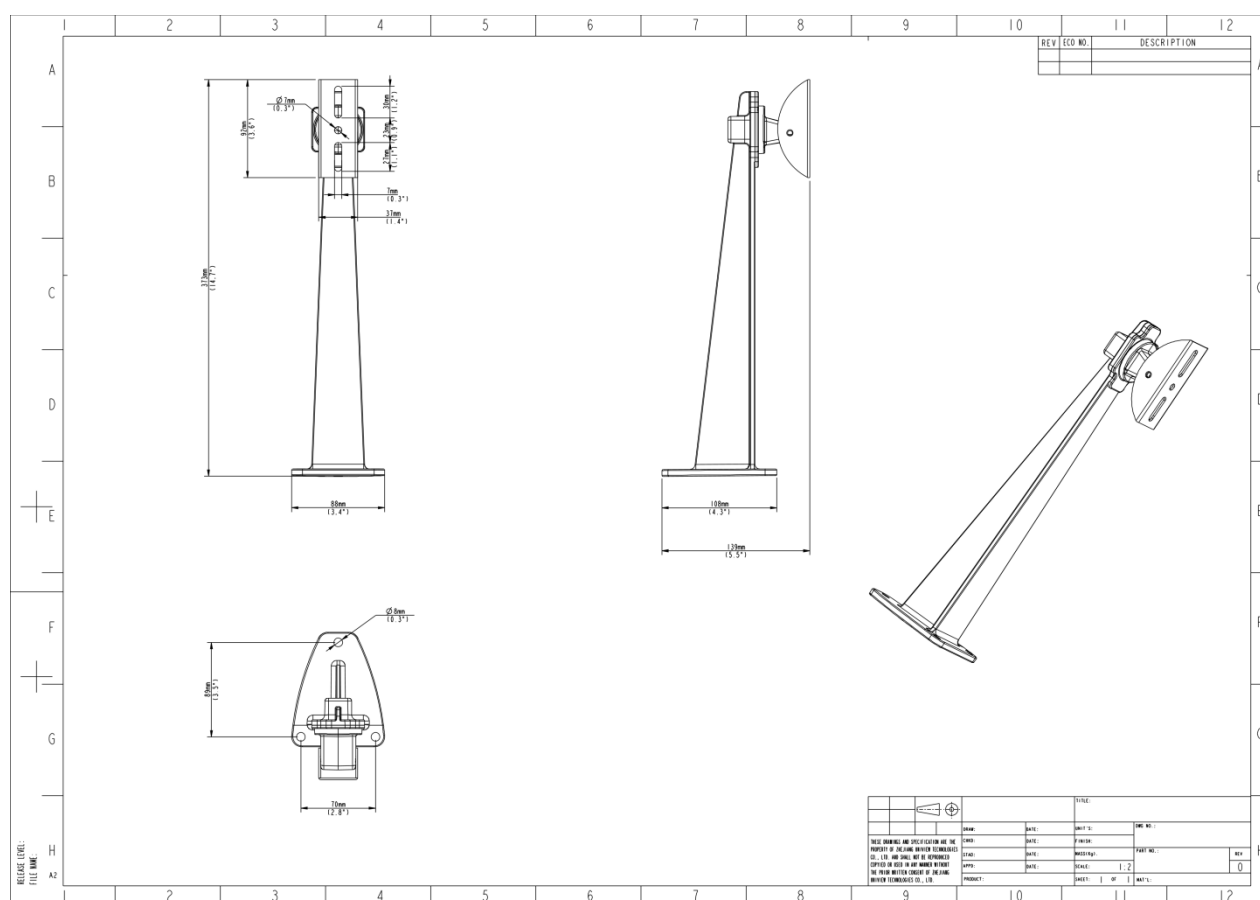
TR-WM06-I-IN



Specifications

Model	TR-WM06-I-IN
Bracket	
Application	Indoor/Outdoor, wall installation for box camera housing
Application Range	28/29 Series Housing
Bracket Dimensions	139mm*88mm*373mm (5.5"x3.4"x14.7")
Bracket Weight	0.8kg(1.76lb)
Bracket Material	Aluminum alloy
Adjustable Range	Horizontal: 360°; Vertical: -45°~0°

Dimensions



Ordering Info

Product Model	Description
TR-WM06-I-IN	Wall Mounting Bracket for 28&29Housing

Unlimited New View

Zhejiang Uniview Technologies Co., Ltd.



<http://www.uniview.com>



overseasbusiness@uniview.com; globalsupport@uniview.com



No. 369, Xietong Road, Xixing Sub-district, Binjiang District, Hangzhou City, 310051, Zhejiang Province, China



©2023-2025 Zhejiang Uniview Technologies Co., Ltd. All rights reserved.

*Product specifications and availability are subject to change without notice.

*Despite our best efforts, technical or typographical errors may exist in this document.

Uniview cannot be held responsible for any such errors and reserves the right to change the contents of this document without prior notice.