

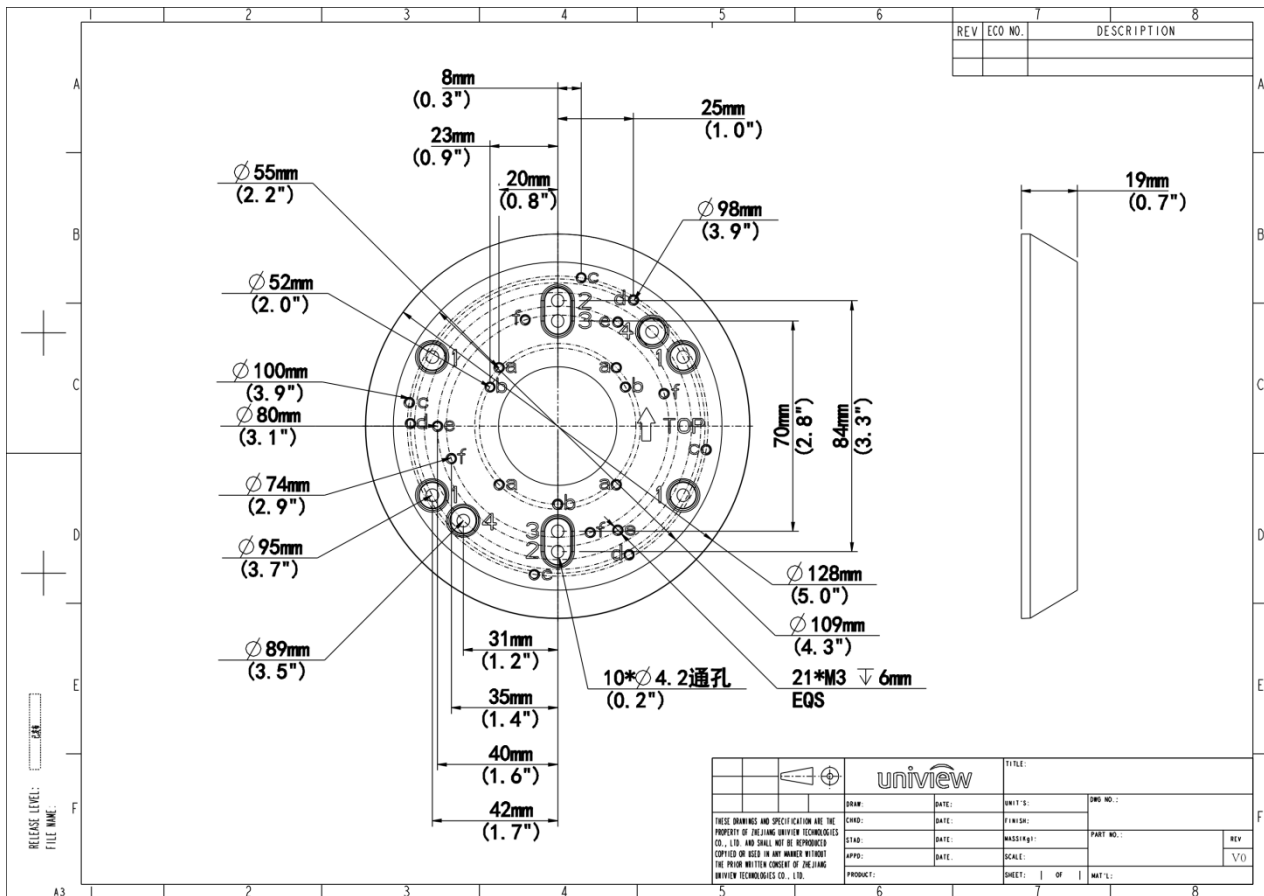
Switch Box Adapter for Fixed Dome and Bullet
TR-SM05-IN



Specifications

| | |
|---------------------------|--|
| Model | TR-SM05-IN |
| Bracket | |
| Application | Electric-box Transfer plate for IPC32X Series, IPC361XX Series, IPC21XX Series, IPC231X SB Series, IPC232X LB Series |
| Bracket Dimensions | Φ128.0mmx18.5mm (5.0" x0.7") |
| Bracket Weight | 0.15kg (0.33lb) |
| Bracket Material | Aluminum alloy |

Dimensions



Ordering Info

| Product Model | Description |
|---------------|-----------------------------------|
| TR-SM05-IN | Switch Box Adapter for Fixed Dome |

Unlimited New View

Zhejiang Uniview Technologies Co., Ltd.



<http://www.uniview.com>



overseasbusiness@uniview.com; globalsupport@uniview.com



No. 369, Xietong Road, Xixing Sub-district, Binjiang District, Hangzhou City, 310051, Zhejiang Province, China



©2023-2025 Zhejiang Uniview Technologies Co., Ltd. All rights reserved.

*Product specifications and availability are subject to change without notice.

Despite our best efforts, technical or typographical errors may exist in this document. Uniview cannot be held responsible for any such errors and reserves the right to change the contents of this document without prior notice.