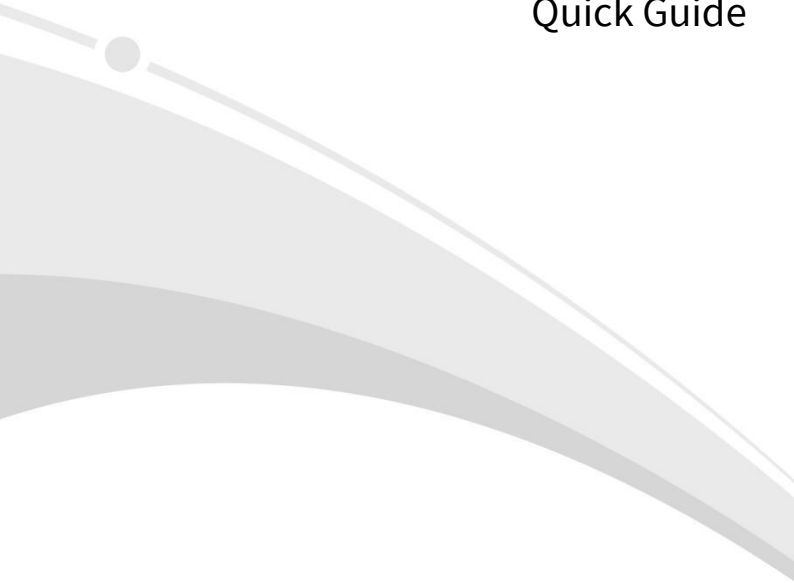


Intelligent Traffic Camera

Quick Guide



V2.00

1 Packing List

Contact your local dealer if the package is damaged or incomplete. The package contents may vary with device model.

No.	Name	Qty	Unit
1	Camera	1	PCS
2*	Mount accessories ⁽¹⁾	1	Set
3	Product documents	1	Set

Remarks: * means optional and supplied with certain models only.

(1) Including one or more items from screws, box wrench, corrugated pipe, etc.

2 Product Overview

The appearance and interfaces may vary with device model.

Figure 2-1 Dimensions

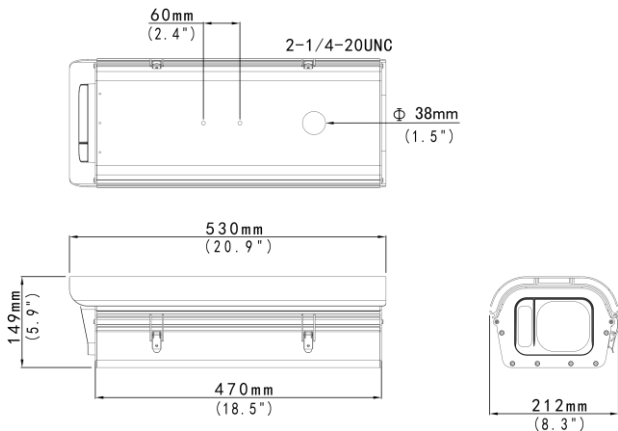
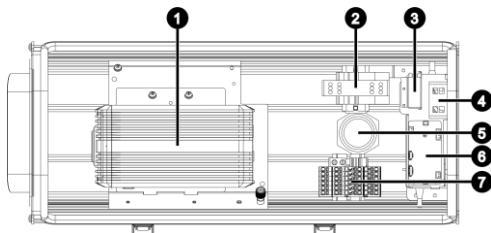


Figure 2-2 Interior View



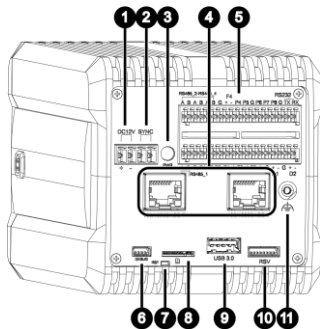
1. Camera	2. Power interface, 220V AC±20%
3. Heating resistor	4. Fan
5. Corrugated pipe connector	6. Housing control board
7. Expansion terminal block	-



CAUTION!

The heating resistor will heat up to remove fog when the temperature inside the camera is below 35°C. Please be careful to avoid burns.

Figure 2-3 Interfaces



1. DC 12V power interface	2. Signal sync interface
3. Power status indicator	4. 1000Mbps electrical port
5. Terminal block	6. Debug interface
7. Reset key	8. Micro SD card slot
9. USB interface	10. RSV communication interface
11. Grounding terminal	-

3 Installation

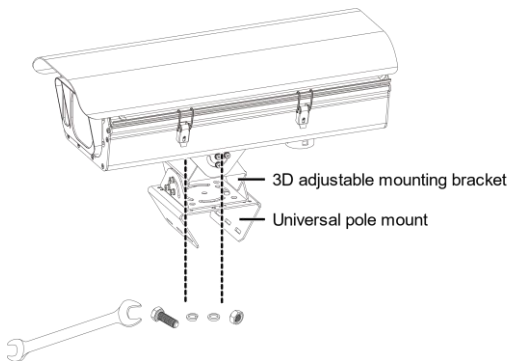
3.1 Mount the Camera



NOTE!

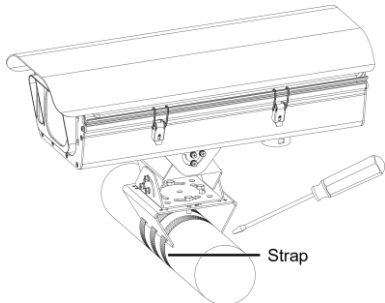
- The 3D adjustable mounting bracket, universal pole mount, and strap are sold separately.
- Before you start, make sure that the latches are fastened.

1. Use the screw assembly (screws, spring washers, flat washers, nuts) to secure the 3D adjustable mounting bracket to the camera and attach the universal pole mount to the 3D bracket.



2. Lead the strap through the holes on both sides of the universal pole mount and secure it to the pole arm. Use a screwdriver to turn the screws on the strap to

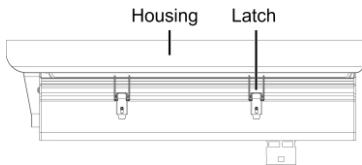
adjust the strap to the appropriate size.



3. Loosen the screws on the 3D adjustable mounting bracket, adjust the shooting angle, and then tighten the screws.

3.2 Open the Housing

Release the latches on the side of the housing and open the housing.



3.3 (Optional) Install the Micro SD Card

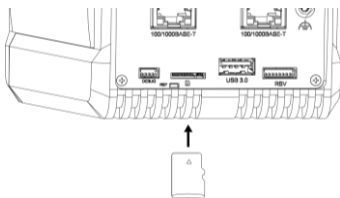
Install a Micro SD card (user-supplied) if you want to save video on an on-board SD card.



NOTE!

- Please format the Micro SD card before use. The SD card can be formatted on the camera's Web interface.
- Please consult your dealer or technical support for the recommended SD card specifications.
- Before you insert or remove the Micro SD card, be sure to disconnect power and wait till the camera stops operation; otherwise, the camera and the Micro SD card may be damaged.

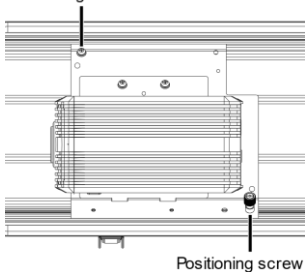
Refer to the orientation marked on the Micro SD card slot and insert the Micro SD card into the Micro SD card slot.



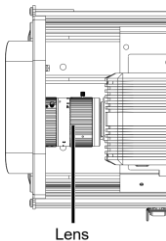
3.4 Install the Lens

1. Loosen the positioning screws.

Positioning screw



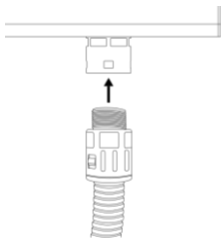
2. Move the camera to allow space for installing the lens, and then install the lens (sold separately).
3. Move the camera to about 1mm away from the front glass.



4. Tighten the positioning screws.

3.5 Install the Corrugated Pipe

Connect the corrugated pipe to the corrugated pipe connector at the bottom of the camera.



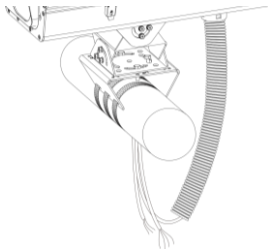
3.6 Connect Cables



NOTE!

- The cable connection between the modules inside the camera has been done at the factory, so you only need to connect the external cables.
- Keep appropriate length of cables inside the camera to allow sufficient ventilation space between the fan and the glass window.

Lead the external cables through the hole at the bottom of the pole arm and then through the corrugated pipe into the camera.



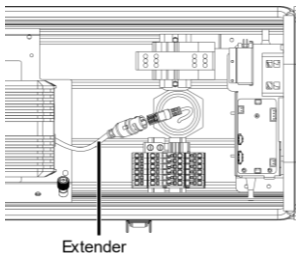
3.6.1 Connect the Network Cable



NOTE!

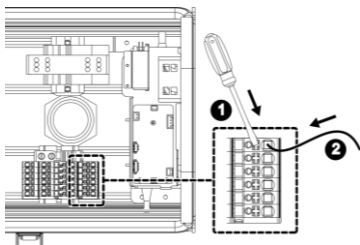
An extender has been connected to the electrical port of the camera at the factory to facilitate the network cable connection.

Connect one end of the network cable to the electrical port or the extender on the camera's rear panel, and the other end to external network.



3.6.2 (Optional) Connect External Devices

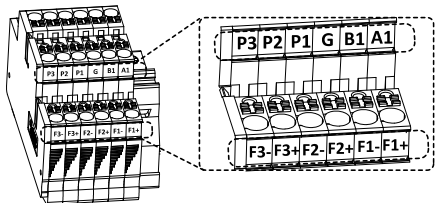
1. Use an appropriate tool (such as a small screwdriver) to press and hold the button on the expansion terminal block, and then insert the cable of the external device into the hole as shown below.



2. Release the tool.

**NOTE!**

Refer to the marks on the side of the terminal block for cable connection. The figure below is for illustrative purpose only.



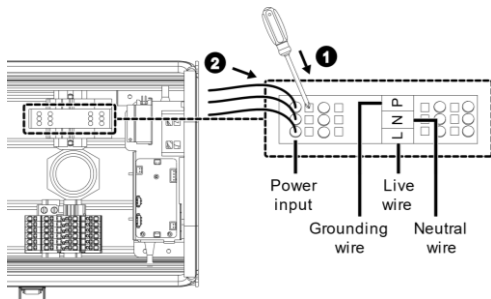
Interface	Mark	Description
RS485	A1	Connects to the RS485+ connector of an external device.
	B1	Connects to the RS485- connector of an external device.
	G	Connects to the grounding cable of an external device.
P	P1/P2/P3	Connects to the strobe trigger+ connector of an illuminator (strobe trigger- is connected to the G port).
F	F1±/ F2±/ F3±	Connects to the flash trigger+/- connector of an illuminator.

3.6.3 Connect the Power Cable

**CAUTION!**

Use independent power supplies for the camera and external illuminator to avoid interference.

1. Insert an appropriate tool (such as a small screwdriver) into the square hole until it hits the bottom, and then insert the power wire into the corresponding round hole.



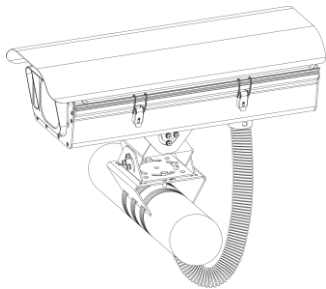
2. Release the tool.

3.7 Close the Housing

1. Close the housing and lock the latches.
2. Use a box wrench to secure the latches with the supplied small screws.

3.8 Fix the Corrugated Pipe

Fix the other end of the corrugated pipe to the hole at the bottom of the pole arm, and seal the joint to prevent water from entering.



4 Startup

Check that the camera is properly installed, and then connect power to start it.

5 Web Login

Log in to the camera's Web interface to perform management or maintenance operations.

Item	Defaults
Network address	<ul style="list-style-type: none">● IP address/subnet mask: 192.168.1.13/255.255.255.0● Gateway: 192.168.1.1 <p>NOTE: DHCP is enabled by default. If a DHCP server is deployed in the network, an IP address may be assigned automatically, and you need to use the assigned IP address to log in.</p>
Username	admin
Password	123456 <p>NOTE: The default password is intended only for your first login. To ensure security, please change the password immediately after your first login. You are strongly recommended to set a strong password of at least nine characters including all three elements: digits, letters and special characters.</p>

Follow the steps to log in to the camera's web interface.

1. Open your browser, input the camera's IP address in the address bar and then press **Enter** to open the login page.



NOTE!

If you're prompted to install a plug-in, follow the on-screen instructions to complete the installation (close all browsers during installation), and then open the browser again to log in.

2. Enter the username and password, and then click **Login**.

6 FAQ

1 How to restore factory default settings?

In ten minutes after the camera is powered on, press and hold the RST button using a suitable pointed object like a toothpick or paper clip for about 15 seconds, and release when the PWR light turns red. The camera will restart and restore factory

default settings. The reset button only works within 10 minutes after the camera is powered on.

2 Failed to install the plug-in?

Before you log in, follow the steps to add the camera's IP to the trusted sites in your IE: Click **Tool** > **Internet Options** > **Security**. Click **Trusted sites**, click **Sites**, and then add the camera's IP address. If you are using Win 7, you also need to save the setup.exe to your computer first, and then right-click the file and select **Run as administrator**.

3 No live videos after first login?

Please turn off the firewall on your computer and then log in again.

Disclaimer and Safety Warnings


Copyright Statement

©2021-2024 Zhejiang Uniview Technologies Co., Ltd. All rights reserved.

No part of this manual may be copied, reproduced, translated or distributed in any form or by any means without prior consent in writing from Zhejiang Uniview Technologies Co., Ltd (referred to as Uniview or us hereafter).

The product described in this manual may contain proprietary software owned by Uniview and its possible licensors. Unless permitted by Uniview and its licensors, no one is allowed to copy, distribute, modify, abstract, decompile, disassemble, decrypt, reverse engineer, rent, transfer, or sublicense the software in any form by any means.

Trademark Acknowledgements

 are trademarks or registered trademarks of Uniview.

All other trademarks, products, services and companies in this manual or the product described in this manual are the property of their respective owners.

Export Compliance Statement

Uniview complies with applicable export control laws and regulations worldwide, including that of the People's Republic of China and the United States, and abides by relevant regulations relating to the export, re-export and transfer of hardware, software and technology. Regarding the product described in this manual, Uniview asks you to fully understand and strictly abide by the applicable export laws and regulations worldwide.

EU Authorised Representative

UNV Technology EUROPE B.V. Room 2945, 3rd Floor, Randstad 21-05 G, 1314 BD, Almere, Netherlands.

Privacy Protection Reminder

Uniview complies with appropriate privacy protection laws and is committed to protecting user privacy. You may want to read our full privacy policy at our website and get to know the ways we process your personal information. Please be aware, using the product described in this manual may involve the collection of personal information such as face, fingerprint, license plate number, email, phone number, GPS. Please abide by your local laws and regulations while using the product.

About This Manual

- This manual is intended for multiple product models, and the photos, illustrations, descriptions, etc. in this manual may be different from the actual appearances, functions, features, etc. of the product.
- This manual is intended for multiple software versions, and the illustrations and descriptions in this manual may be different from the actual GUI and functions of the software.

- Despite our best efforts, technical or typographical errors may exist in this manual. Uniview cannot be held responsible for any such errors and reserves the right to change the manual without prior notice.
- Users are fully responsible for the damages and losses that arise due to improper operation.
- Uniview reserves the right to change any information in this manual without any prior notice or indication. Due to such reasons as product version upgrade or regulatory requirement of relevant regions, this manual will be periodically updated.

Disclaimer of Liability

- To the extent allowed by applicable law, in no event will Uniview be liable for any special, incidental, indirect, consequential damages, nor for any loss of profits, data, and documents.
- The product described in this manual is provided on an "as is" basis. Unless required by applicable law, this manual is only for informational purpose, and all statements, information, and recommendations in this manual are presented without warranty of any kind, expressed or implied, including, but not limited to, merchantability, satisfaction with quality, fitness for a particular purpose, and noninfringement.
- Users must assume total responsibility and all risks for connecting the product to the Internet, including, but not limited to, network attack, hacking, and virus. Uniview strongly recommends that users take all necessary measures to enhance the protection of network, device, data and personal information. Uniview disclaims any liability related thereto but will readily provide necessary security related support.
- To the extent not prohibited by applicable law, in no event will Uniview and its employees, licensors, subsidiary, affiliates be liable for results arising out of using or inability to use the product or service, including, not limited to, loss of profits and any other commercial damages or losses, loss of data, procurement of substitute goods or services; property damage, personal injury, business interruption, loss of business information, or any special, direct, indirect, incidental, consequential, pecuniary, coverage, exemplary, subsidiary losses, however caused and on any theory of liability, whether in contract, strict liability or tort (including negligence or otherwise) in any way out of the use of the product, even if Uniview has been advised of the possibility of such damages (other than as may be required by applicable law in cases involving personal injury, incidental or subsidiary damage).
- To the extent allowed by applicable law, in no event shall Uniview's total liability to you for all damages for the product described in this manual (other than as may be required by applicable law in cases involving personal injury) exceed the amount of money that you have paid for the product.

Network Security

Please take all necessary measures to enhance network security for your device.

The following are necessary measures for the network security of your device:

- **Change default password and set strong password:** You are strongly recommended to change the default password after your first login and set a strong password of at least nine characters including all three elements: digits, letters and special characters.

- **Keep firmware up to date:** It is recommended that your device is always upgraded to the latest version for the latest functions and better security. Visit Uniview's official website or contact your local dealer for the latest firmware.

The following are recommendations for enhancing network security of your device:

- **Change password regularly:** Change your device password on a regular basis and keep the password safe. Make sure only the authorized user can log in to the device.
- **Enable HTTPS/SSL:** Use SSL certificate to encrypt HTTP communications and ensure data security.
- **Enable IP address filtering:** Allow access only from the specified IP addresses.
- **Minimum port mapping:** Configure your router or firewall to open a minimum set of ports to the WAN and keep only the necessary port mappings. Never set the device as the DMZ host or configure a full cone NAT.
- **Disable the automatic login and save password features:** If multiple users have access to your computer, it is recommended that you disable these features to prevent unauthorized access.
- **Choose username and password discretely:** Avoid using the username and password of your social media, bank, email account, etc, as the username and password of your device, in case your social media, bank and email account information is leaked.
- **Restrict user permissions:** If more than one user needs access to your system, make sure each user is granted only the necessary permissions.
- **Disable UPnP:** When UPnP is enabled, the router will automatically map internal ports, and the system will automatically forward port data, which results in the risks of data leakage. Therefore, it is recommended to disable UPnP if HTTP and TCP port mapping have been enabled manually on your router.
- **SNMP:** Disable SNMP if you do not use it. If you do use it, then SNMPv3 is recommended.
- **Multicast:** Multicast is intended to transmit video to multiple devices. If you do not use this function, it is recommended you disable multicast on your network.
- **Check logs:** Check your device logs regularly to detect unauthorized access or abnormal operations.
- **Physical protection:** Keep the device in a locked room or cabinet to prevent unauthorized physical access.
- **Isolate video surveillance network:** Isolating your video surveillance network with other service networks helps prevent unauthorized access to devices in your security system from other service networks.

Learn More

You may also obtain security information under Security Response Center at Uniview's official website.

Safety Warnings

The device must be installed, serviced and maintained by a trained professional with necessary safety knowledge and skills. Before you start using the device, please read through this guide carefully and make sure all applicable requirements are met to avoid danger and loss of property.

Storage, Transportation, and Use

- Store or use the device in a proper environment that meets environmental requirements, including and not limited to, temperature, humidity, dust, corrosive gases, electromagnetic radiation, etc.
- Make sure the device is securely installed or placed on a flat surface to prevent falling.
- Unless otherwise specified, do not stack devices.
- Ensure good ventilation in the operating environment. Do not cover the vents on the device. Allow adequate space for ventilation.
- Protect the device from liquid of any kind.
- Make sure the power supply provides a stable voltage that meets the power requirements of the device. Make sure the power supply's output power exceeds the total maximum power of all the connected devices.
- Verify that the device is properly installed before connecting it to power.
- Do not remove the seal from the device body without consulting Uniview first. Do not attempt to service the product yourself. Contact a trained professional for maintenance.
- Always disconnect the device from power before attempting to move the device.
- Take proper waterproof measures in accordance with requirements before using the device outdoors.

Power Requirements

- Install and use the device in strict accordance with your local electrical safety regulations.
- Use a UL certified power supply that meets LPS requirements if an adapter is used.
- Use the recommended cordset (power cord) in accordance with the specified ratings.
- Only use the power adapter supplied with your device.
- Use a mains socket outlet with a protective earthing (grounding) connection.
- Ground your device properly if the device is intended to be grounded.

Battery Use Caution

- When battery is used, avoid:
 - Extremely high or low temperature and air pressure during use, storage and transportation.
 - Battery replacement.
- Use the battery properly. Improper use of the battery such as the following may cause risks of fire, explosion or leakage of flammable liquid or gas.
 - Replace battery with an incorrect type.
 - Dispose of a battery into fire or a hot oven, or mechanically crushing or cutting of a battery.
- Dispose of the used battery according to your local regulations or the battery manufacturer's instructions.

Avertissement de l'utilisation de la batterie

- Lorsque utiliser la batterie, évitez:
 - Température et pression d'air extrêmement élevées ou basses pendant l'utilisation, le stockage et le transport.
 - Remplacement de la batterie.
- Utilisez la batterie correctement. Mauvaise utilisation de la batterie comme celles mentionnées ici, peut entraîner des risques d'incendie, d'explosion ou de fuite liquide de gaz inflammables.
 - Remplacer la batterie par un type incorrect.

- Disposer d'une batterie dans le feu ou un four chaud, écraser mécaniquement ou couper la batterie.
- Disposer la batterie utilisée conformément à vos règlements locaux ou aux instructions du fabricant de la batterie.

Regulatory Compliance

FCC Statements

This device complies with Part 15 of the FCC Rules. Operation is subject to the following two conditions: (1) this device may not cause harmful interference, and (2) this device must accept any interference received, including interference that may cause undesired operation.

Visit http://en.uniview.com/Support/Download_Center/Product_Installation/Declaration/ for SDoC.

Caution: The user is cautioned that changes or modifications not expressly approved by the party responsible for compliance could void the user's authority to operate the equipment.

NOTE: This equipment has been tested and found to comply with the limits for a Class A digital device, pursuant to part 15 of the FCC Rules. These limits are designed to provide reasonable protection against harmful interference when the equipment is operated in a commercial environment. This equipment generates, uses, and can radiate radio frequency energy and, if not installed and used in accordance with the instruction manual, may cause harmful interference to radio communications. Operation of this equipment in a residential area is likely to cause harmful interference in which case the user will be required to correct the interference at his own expense.

LVD/EMC Directive



This product complies with the European Low Voltage Directive 2014/35/EU and EMC Directive 2014/30/EU.

WEEE Directive-2012/19/EU



The product this manual refers to is covered by the Waste Electrical & Electronic Equipment (WEEE) Directive and must be disposed of in a responsible manner.

Battery Directive-(EU) 2023/1542



Battery in the product complies with the European Battery Regulation (EU) 2023/1542. For proper recycling, return the battery to your supplier or to a designated collection point.