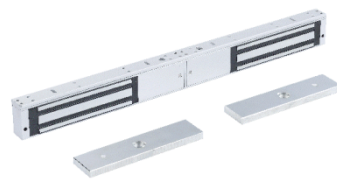


OEA-ML22-500 Double-Door Magnetic Lock (500kg)

OEA-ML22-500



Overview

OEA-ML22-500 is a 500kg double-door magnetic lock for access control systems. It is made of high-strength aluminum alloy and is suitable for wooden doors, glass doors, iron doors, and security doors. The lock is made with fine workmanship and of solid materials, provides strong holding force, low power consumption, and is highly reliable, easy to install, eco-friendly.

Features

- 500kg*2 holding force.
- Internal reverse current protection (MOV).
- Anti-residual magnetism design, wear-resistant material.
- Aluminum shell made of high-strength alloy material.
- Tamper-proof screws.

Specifications

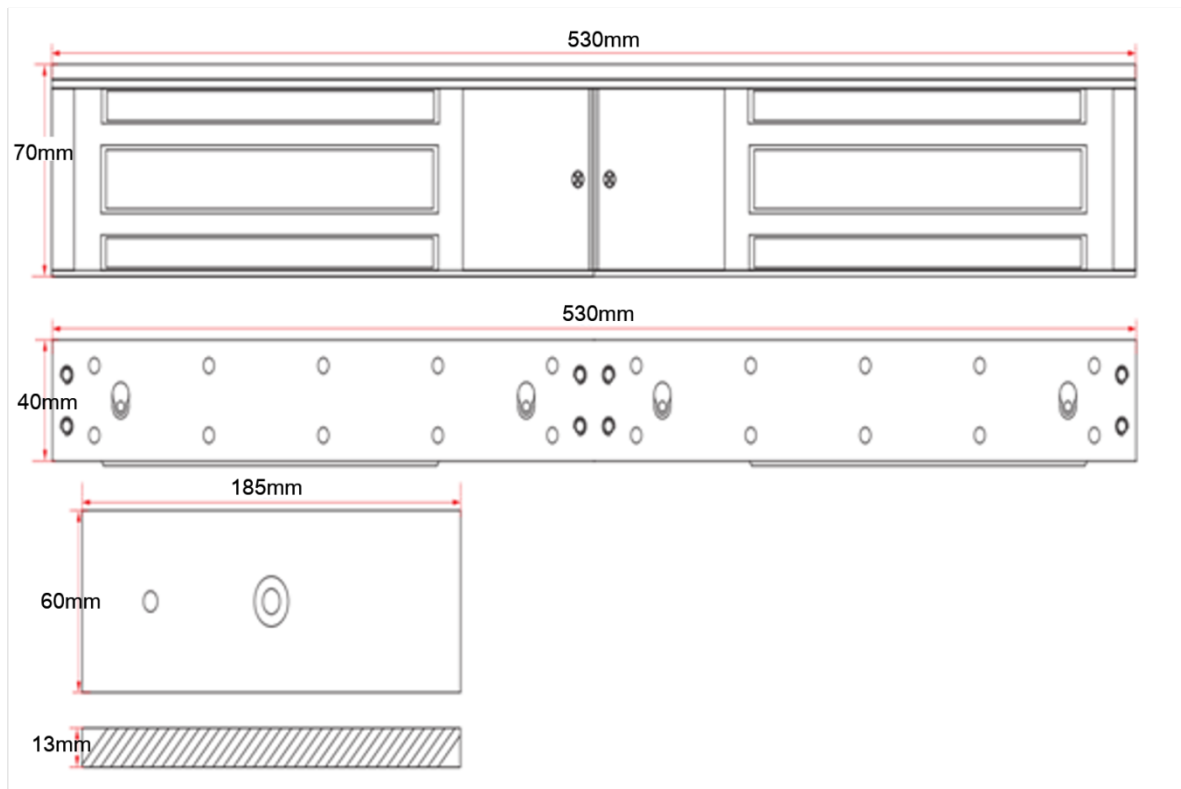
Model	OEA-ML22-500
Hardware Specification	
Power Supply	DC12V/DC24V
Operating Current	600mA*2
Standby Current	600mA*2/300mA*2
Security Type	Failsafe
Operating Environment	Operating temperature: -30°C to +60°C; operating humidity: ≤95%
Weight	9.2kg
Dimensions (L x W x H)	Lock body: 530x70x40(mm); armature plate: 185x60x13(mm)
Door Support	Wooden door, glass door, metal door, etc.

Attestation	CE/FCC/ROHS
-------------	-------------

Ordering Info

Product Model	Description
OEA-ML22-500	Double Door Electromagnetic Lock 500KG

Dimensions



Unlimited New View

Zhejiang Uniview Technologies Co., Ltd.

 <http://www.uniview.com>

 overseasbusiness@uniview.com; globalsupport@uniview.com

 No. 369, Xietong Road, Xixing Sub-district, Binjiang District, Hangzhou City, 310051, Zhejiang Province, China



©2023-2025 Zhejiang Uniview Technologies Co., Ltd. All rights reserved.

*Product specifications and availability are subject to change without notice.

Despite our best efforts, technical or typographical errors may exist in this document. Uniview cannot be held responsible for any such errors and reserves the right to change the contents of this document without prior notice.