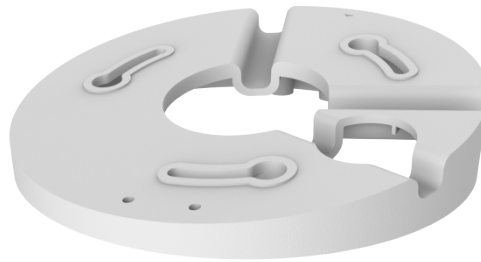


Slant Mounting Bracket for Fixed Dome

TR-UM06-E-IN



Specifications

Model	TR-UM06-E-IN
Bracket	
Application	Indoor, incline installation for IPC32XS/E/L series
Bracket Dimensions	Ø109.6*24.2mm
Bracket Weight	0.04kg(0.11lb)
Bearable Load	1.5kg(3.3lb)
Bracket Material	Plastic

Dimensions

Aggregate product size diagram using "main model" as an example

