

Network Video Recorder NVR824-R-IM Series



Features

- Support Ultra 265/H.265/H.264 video formats 128/256-channel input
- Third-party IP cameras supported with ONVIF conformance: Profile S, Profile G, Profile C, Profile Q, Profile A, Profile T
- Support 2-ch HDMI, 1-ch VGA, HDMI at up to 4K(3840x2160) resolution
- HDMI1, HDMI2 and VGA independent outputs provided
- Up to 12 Megapixels resolution recording
- Redundant power supply optional
- Support HDD hot swap with RAID 0, 1, 5, 6, 10, 50, 60 storage scheme configurable
- Support 2 miniSAS Interfaces
- Support 12V power output
- ANR technology to enhance the storage reliability when the network is disconnected
- Support cloud upgrade
- Support N+1 Hot spare

Specifications

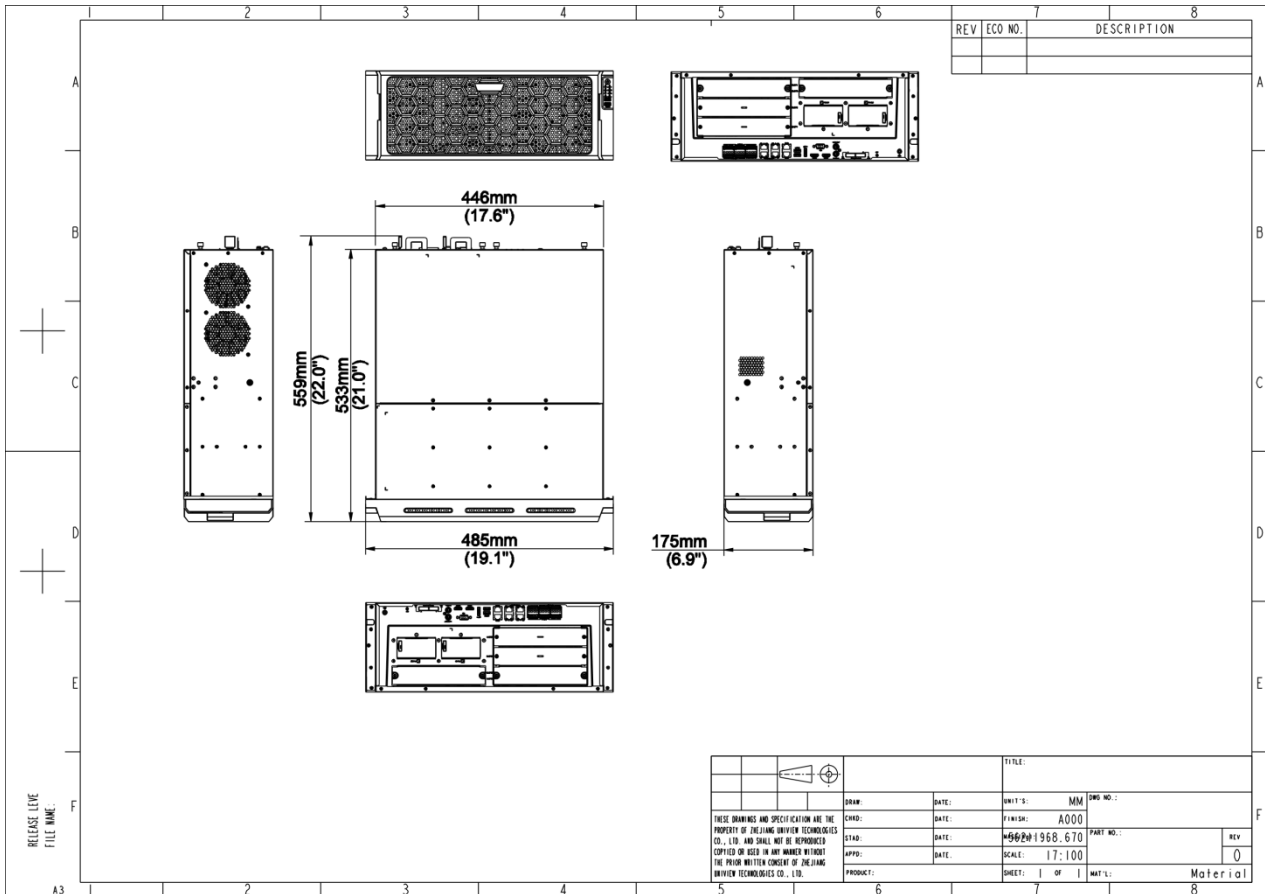
Model	NVR824-128-R-IM-8G	NVR824-256-R-IM-16G
Decoding		
Decoding Format	Ultra 265, H.265, H.264	
Decoding Capability	3 x 12MP@30, 5 x 4K@30, 20 x 1080P@30, 24 x 1080P@25, 40 x 960P@25, 45 x 720P@30, 54 x 720P@25, 96 x D1	
Decoding Capability Description	The resolution of each channel cannot exceed 4096 pixels in length or width, For VGA/HDMI independent output, the VGA live video is output by default. To output the highest resolution video from the HDMI port, please clear the VGA video on the preview page.	
Audio Compression	G.711A, G.711U	
Network		
Incoming Bandwidth	768 Mbps	
Outgoing Bandwidth	768 Mbps	
Remote Users	128	
Protocols	TCP/IP, P2P, UPnP, NTP, DHCP, PPPoE, HTTP, HTTPS, DNS, DDNS, SNMP, SMTP, NFS, RTSP, 802.1x, IPv6, IPv4	
Browser (Plugin)	IE10, IE11, Chrome 45+, Edge 79+, Firefox 52+	
Video/Audio Input		
IP Video Input	128-ch	256-ch
RCA Audio Input	1-ch	
Video/Audio Output		
HDMI Output	4K (3840 × 2160)/30 Hz, 1920 × 1080/60 Hz, 1920 × 1080/50 Hz, 1600 × 1200/60 Hz, 1280 × 1024/60 Hz, 1280 × 720/60 Hz, 1024 × 768/60 Hz	
VGA Output	1920 × 1080/60 Hz, 1920 × 1080/50 Hz, 1600 × 1200/60 Hz, 1280 × 1024/60 Hz, 1280 × 720/60 Hz, 1024 × 768/60 Hz	
RCA Audio Output	1-ch	
Liveview Display	VGA:1/4/6/8/9/16/25/36, HDMI1/HDMI2:1/4/6/8/9/16/25/36/64	
Corridor Mode Screen	3/4/5/7/9/10/12/16/32	
Two-way Audio		
Two-way Audio	1-ch, RCA (Using the audio input and output)	
Snapshot		
FTP/Schedule/Event Snapshot	Full-ch snapshot (max. 4000 × 3000 video resolution, with snapshot resolution same as the video resolution)	
Recording		
Recording Resolution	12 MP/8 MP/6 MP/5 MP/4 MP/3 MP/1080P/960P/720P/D1/2CIF/CIF	
Synchronous Playback in Local	16-ch	
Smart Function		
VCA Detection by IPC	Face Detection, Face Comparison, Vehicle Detection, SIP (Intrusion Detection, Cross Line Detection, Enter Area, Leave Area), Ultra Motion Detection (UMD), Temperature Detection (Fire Detection, Smoking Detection, Temperature Measurement, Smoke and Fire Detection), People Counting (People Flow Counting, Crowd Density Monitoring), Video Metadata, Traffic Monitoring	

Smart by NVR	Face Detection, Face Comparison, Smart Intrusion Prevention (SIP), Video Metadata, (At same channel, only one smart function by NVR can be enabled simultaneously.)	
VCA Search	Face Snapshot Search, Face Comparison Search, Motor Vehicle Search, Non-Motor Vehicle Search, Human Body Search, General Search, People Counting Report	
Smart by IPC	All channels (up to 64 images/s in total)Face Detection, Face Comparison, Vehicle Detection, Temperature Detection, SIP, UMD, Video Metadata, Traffic Monitoring	
by NVR	64-ch	128-ch
Search by Image	Support	
Plate Comparison		
Vehicle Number Library	Up to 5 vehicle picture libraries, with up to 25,000 vehicle pictures in total	
SIP		
SIP by NVR with normal cameras	64-ch	128-ch
Video Metadata		
Video Metadata by NVR with normal cameras	64-ch	128-ch
Video Metadata Type	Motor Vehicle: Vehicle Color, Vehicle Type, Vehicle Brand, Direction. Non-Motor Vehicle: Non-Motor Vehicle Type, Direction, Gender, Age, Upper Garment Length. Human Body: Gender, Age, Mask, Hairstyle, Bag Style, Direction, Upper Garment Length, Lower Garment Length.	
Alarm		
General Alarm	Defocus Detection, Scene Change Detection, Object Left Behind, Object Removed, Auto Tracking, Motion Detection, Tampering, Human Body Detection, Video Loss, Alarm Input, Audio Detection	
Alert Alarm	IP Conflict, Network Disconnected, Disk Offline, Disk Abnormal, Illegal Access, Hard Disk Space Low, Hard Disk Full, Recording/Snapshot Abnormal, High CPU Temperature, High Motherboard Temperature, Array Damaged, Array Degraded	
GUI Language		
GUI Language	38 languages: Simplified Chinese, Traditional Chinese, English, Vietnamese, Thai, Turkish, Spanish (Latin America), Portuguese (Brazil), Spanish, Portuguese, French, German, Italian, Dutch, Polish, Czech, Hungarian, Slovak, Russian, Hebrew, Arabic, Ukrainian, Estonian, Bulgarian, Greek, Romanian, Danish, Swedish, Norwegian, Finnish, Croatian, Slovenia, Serbia, Korean, Japanese, Latvian, Lithuanian, Persian	
Hard Disk		
SATA	24 SATA interfaces	
Capacity	Up to 16 TB for each HDD (The maximum HDD capacity varies with environment temperature)	
Disk Group	Support	
Redundant Storage	Support	
Disk Array Type	RAID 0, 1, 5, 6, 10, 50, 60	
Hot Swap	Support	
External Interface		
Network Interface	4 RJ45 10 M/100 M/1000 M self-adaptive Ethernet Interface	
USB	Front panel: 2 × USB2.0, Rear panel: 2 × USB3.0	
RS485	1	




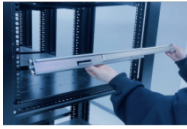

RS232	1
Alarm In	24-ch
Alarm Out	8-ch
eSATA	1
miniSAS	2
Power Output	12 V
Power Supply	AC 100 to 240 V
Power Switch	Support
Redundant Power Supply	Support
Working Environment	
Working Temperature	-10 °C to 50 °C (14 °F to 122 °F)
Working Humidity	≤ 90% RH (non-condensing)
Power Consumption (without HDD)	≤ 300W
Dimensions	
Weight (without HDD)	≤ 12.5Kg (27.56lb)
Height	4U
Dimensions	533mm × 482mm × 131.0mm (21.0" × 19.0" × 5.1") 484.6mm × 533mm × 175.5mm (19.1"×21.0"×6.9")
Certification	
Certification	CE; FCC; UL; RoHS; WEEE
CE	EN 55032, EN 61000-3-3, EN IEC 61000-3-2, EN 55035
FCC	Part15 Subpart B

Dimensions

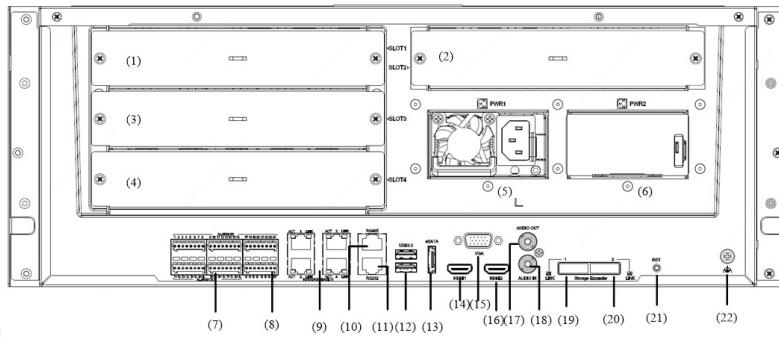
Aggregate product size diagram using NVR824-128-R-IM-8G as an example



Accessories

FB-HD04-B-NB	FB-HD07-B-NB	DEU1016-B
4-ch HDMI Output Decoding Card	7-ch HDMI Output Decoding Card	16 HDDs 3U Disk Enclosure
		
SL-A	PWR-DC12-550A-IN	
Slide Rail	550W Power Accessories Module	
		

Rear Panel



(1) Slot1	(2) Slot2	(3) Slot3
(4) Slot4	(5) Power Supply 1	(6) Power Supply 2(optional)
(7) Alarm in/out	(8) 12V DC Output	(9) Network Interface
(10) RS485	(11) RS232	(12) USB3.0
(13) eSATA	(14) HDMI1 Output	(15) VGA Output
(16) HDMI2 Output	(17) Audio Output	(18) Audio Input
(19) miniSAS	(20) miniSAS	(21) RST
(22) GND		

Unlimited New View

Zhejiang Uniview Technologies Co., Ltd.



<http://www.uniview.com>



overseasbusiness@uniview.com; globalsupport@uniview.com



No. 369, Xietong Road, Xixing Sub-district, Binjiang District, Hangzhou City, 310051, Zhejiang Province, China



©2023-2025 Zhejiang Uniview Technologies Co., Ltd. All rights reserved.

*Product specifications and availability are subject to change without notice.

Despite our best efforts, technical or typographical errors may exist in this document. Uniview cannot be held responsible for any such errors and reserves the right to change the contents of this document without prior notice.