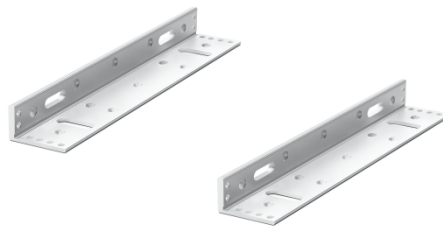


280KG Double Door Electromagnetic Lock L-Shaped Bracket OEA-MS22-280L



Overview

OEA-MS22-280L is two L-Brackets for 280kg double door magnetic locks

Features

- Used to install the armature plate of 280kg double door magnetic locks

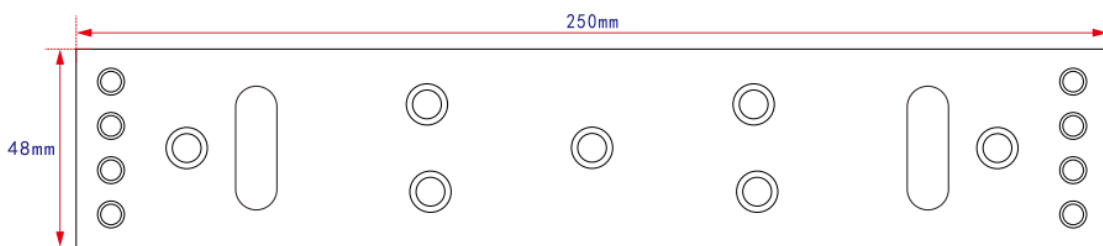
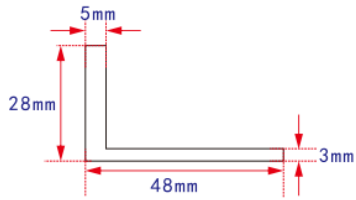
Specifications

Model	OEA-MS22-280L
Physical	
Material	Aluminum alloy
Hardware Specification	
Dimensions (L x W x H)	250*48*28mm*2
Weight	0.27kg*2

Ordering Info

Product Model	Description
OEA-MS22-280L	280KG Double Door Electromagnetic Lock L-Shaped Bracket

Dimensions



Unlimited New View

Zhejiang Uniview Technologies Co., Ltd.

 <http://www.uniview.com>

 overseasbusiness@uniview.com; globalsupport@uniview.com

 No. 369, Xietong Road, Xixing Sub-district, Binjiang District, Hangzhou City, 310051, Zhejiang Province, China



©2023-2025 Zhejiang Uniview Technologies Co., Ltd. All rights reserved.

*Product specifications and availability are subject to change without notice.

Despite our best efforts, technical or typographical errors may exist in this document. Uniview cannot be held responsible for any such errors and reserves the right to change the contents of this document without prior notice.