

Ethernet Switch Datasheet

NSW5110-24GT4GP-IN



주요 특징

- Support RJ45 Auto-MDI/MDIX
- Flow Control for Full Duplex operation and back pressure for Half Duplex Operation;
- Support Energy-Efficient Ethernet (EEE) function (IEEE802.3az);
- Supports a abundant lineup of L2 features, including 802.1Q tag VLAN, Port Mirroring, STP/RSTP/MSTP, Link Aggregation Control Protocol and 802.3x Flow Control function;
- Web, CLI (Console Port, Telnet, SSH), SNMP and RMON bring abundant management policies;

사양

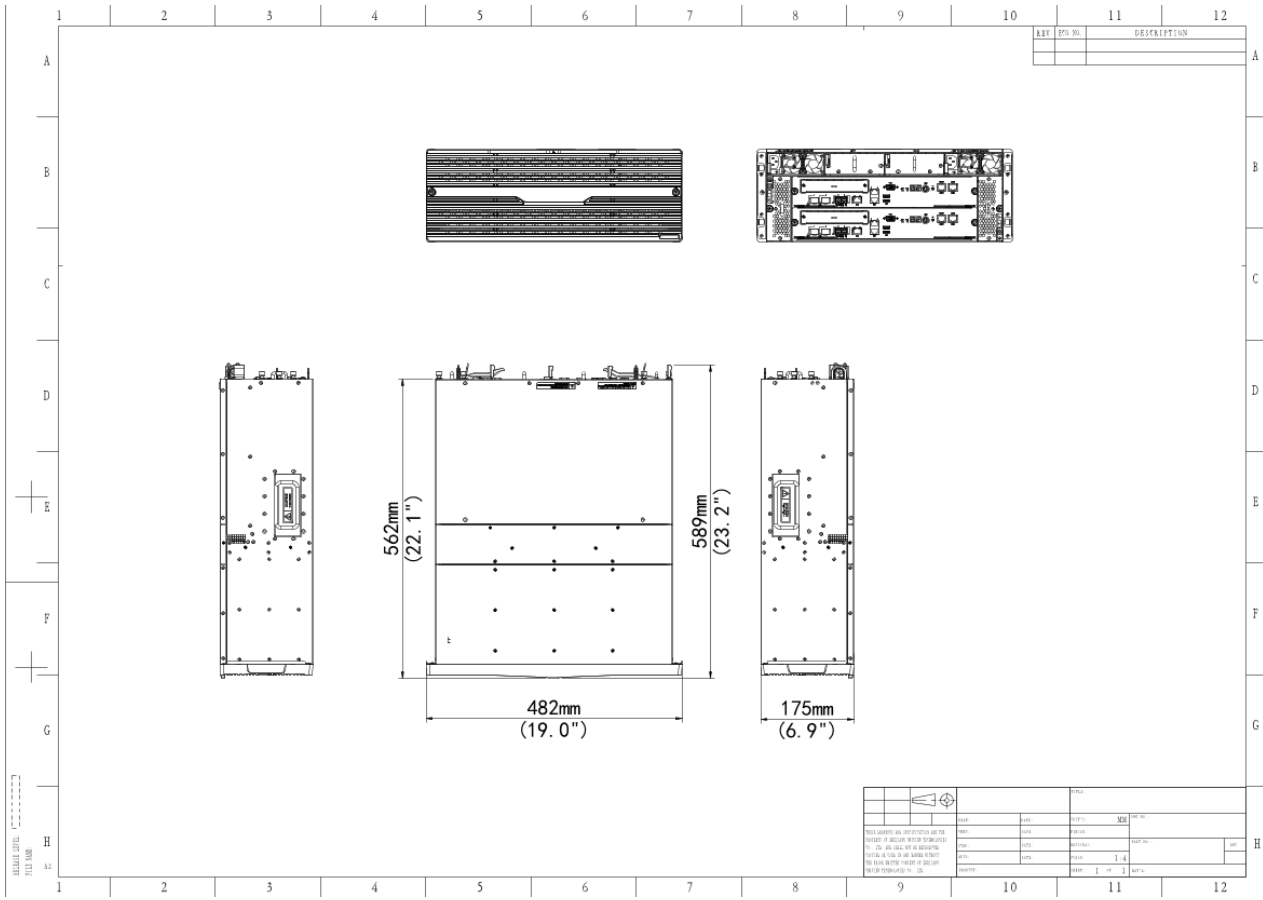
Model	NSW5110-24GT4GP-IN
Hardware Specification	
Ports Type	24×1000Mbps ports (RJ45)+2×1000Mbps Fiber(SFP) ports+2G Combo ports
Standards	IEEE802.3, IEEE802.3u, IEEE802.3z, IEEE802.3ab, IEEE802.3x
Switching capacity	56 Gbps
Forwarding performance	41.66Mpps
Packet Buffer	4 M bit
MAC	8K
Dimensions (W×D×H)	440 × 208 × 44 mm
Weight	<3.6 kg
Mean Time Between Failure	> 50000 hours

(MTBF)	
Software Specification	
IEEE802.1d STP	Support IEEE802.1d STP
IEEE802.1w RSTP	Support IEEE802.1w RSTP
MSTP	Support standard 802.1s MSTP, Support 64 MSTP instances
STP Optional Features	Support port fast, Support BPDU filter, Support BPDU guard, Support hello-time, Support max age, Support forward delay, Support max hops, Support TC ignore
MSTP Port Optional Features	Support port fast, Support BPDU filter, Support BPDU guard, Support TC guard, Support TC filter, Support Auto edge, Support TC protection, Support compatibility mode
AP	Support Flow-Balance Methoddst-ip Destination IP address; dst-mac Destination MAC address; src-dst-ip Source and destination IP address; src-dst-mac Source and destination MAC address; src-ip Source IP address; src-mac Source MAC address, Support AP member port that is included in each AP.
Storm Control	Support multicast storm control, Support control granularity (percentage and kbps are values for 64-byte datagram) 64 kbps, Support broadcast storm control, Support unicast storm control
Mirroring	Support Many-to-one mirror, Support Stream-based mirroring, Support number of mirror groups 4
MAC Address	Support gentries MAC address numbers 8K, Support static MAC address numbers 1024, Support filtering MAC address numbers 1024, Support check and delete address table, Support filtering address , Support static address and dynamic learning address
LLDP	Support LLDP
ONVIF	Support ONVIF detect, Support ONVIF server
IGMP Snooping	Support IGMP snooping groups,

	Support IGMP V1, V2 snooping, Support source IP check, Support multicast policy and filtering, Support IGMP fast Leave
Port Limit	Support egress speed limit granularity, Support Ingress speed limit, Support egress speed limit
Network Tool	Support Ping, Support traceroute
ACE Capacities	Support the input direction is associated with the physical port
QoS	Support QoS hardware queues, Support determine the exit queue according to 802.1p, DSCP, port, Support Stream-based 802.1p Re-marking, Support Stream-based queue maps, Support SP, Support WRR, Support RR, Support WFQ
Port Security	Support Mac filtering time, Support White-list data, Support clear Mac address table, Support Mac address binding, Support max Mac numbers settings, Support blacklist data, Support violation mode
Port Isolation	Support
LOOPBACK	Support
DAI	Support software DAI entries
SNMP	Supporting version (SNMPV1, V2c, V3)
Web Management	Support HTTP access
RMON	Support RMON (1, 2, 3, 9)
System Upgrade	Support system upgrade or page upgrade via TFTP
Save Configuration	Support save configuration
Configuration Management	Support Import, export, backup configuration, restore factory configuration
Syslog/Debug	Support Syslog/Debug
Security Function	Support
Basic Characteristics	Support login authentication (password, none)
Password Security	Support static password encryption transmission, storage, Support strong password and password minimum length check
Radius	Support radius, Support specify multiple groups of servers IP
Tacacs+	Support specify multiple groups of servers IP , Support Tacacs+
SSH	Support SSHv2.0

Anti-dos Attack	Support Interrupting land attack packets and illegal TCP packets
Dot1x	Support 802.1X, Support port base, Support Mac base, Support MAB, Support multiple account switching
Defense Gateway ARP Spoofing	Support defense gateway ARP spoofing
IP Source Guard	Support IP source guard
CPP	Support hardware CPP
ARP Check	Support leverage IP+MAC data binding of IP source guard, Support IP + MAC data binding using DHCP snooping, Support leverage 1X IP+MAC data binding, Support trusted ARP
DHCP Relay	Support allow configuration of the number of servers
DHCP Snooping	Support Option82, Support trust port configuration, Support IP, MAC binding table(IP Source Guard), Support bind to logical ports (including physical interfaces), Support software binding database capacity, Support bind to VLAN
DHCP Server	Support binding table configuration, Support address pool configuration
Telnet	Support Telnet, Support maximum number of connections
TFTP	Support TFTP client
FTP	Support FTP server, Support FTP client
ERPS	Support delete ERPS loop, Support ERPS loop configuration, Support ERPS time configuration
Static And Dynamic LACP Link Aggregation	Support LACP configuration, Support Load-Balance Method; dst-ip Destination IP address; dst-mac Destination MAC address; src-dst-ip Source and destination IP address; src-dst-mac Source and destination MAC address; src-ip Source IP address; src-mac Source MAC address, Support link aggregation groups, Support max link aggregation numbers of each link aggregation group, Support link aggregation port configuration
Compliance	
NDA Compliant	Support

크기



Unlimited New View

浙江宇视科技有限公司



<http://www.uniview.com>



overseasbusiness@uniview.com; globalsupport@uniview.com



South Tower, Building 10, Wanlun Science Park, 88 Jiangling Road, Hangzhou, P.R.China



©2023-2025 Zhejiang Uniview Technologies Co., Ltd. All rights reserved.

*Product specifications and availability are subject to change without notice.

虽然我试图在本资料中提供准确的信息，但不保证资料的内容不含有技术性误差或印刷性错误，为此我司对本资料中的不准确不承担任何责任。我司保留在没有通知或提示的情况下对本资料的内容进行修改的权利。