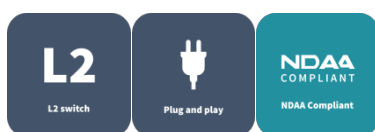


Ethernet PoE Switches Datasheet

SW-2106-LP



Features

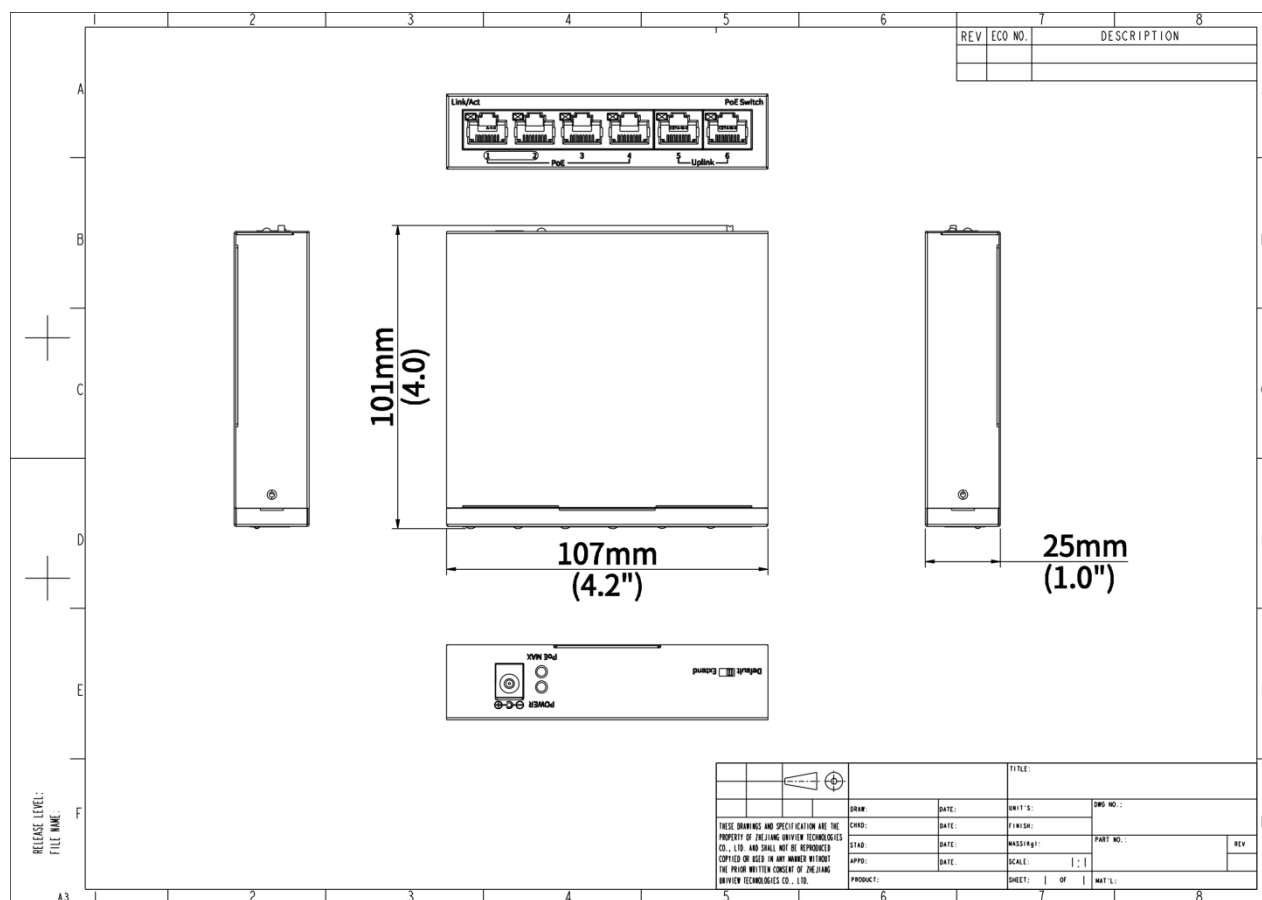
- Multiple working modes to address your business needs: Normal, Secure and Surveillance
- Support port traffic control
- Support for secure mode, all downlink ports can communicate only with uplink ports
- Up to 250m transmission distance on surveillance mode
- Support buffer optimization
- All metal housing, safe and reliable

Specifications

Model	SW-2106-LP
Hardware Specification	
Ports Type	6×100Mbps network ports (RJ45), including 4 PoE ports
Switching capacity	1.2 Gbps
Power Supply	DC: 48/51V, powered by adapter(100 to 240V, 50/60Hz)
Forwarding performance	0.90Mpps
MAC	1K
PoE Standard	IEEE 802.3af, IEEE 802.3 at
Packet Buffer	448K bit
PoE Mode	ModeB (4578)
Max.PoE Power	Max capacity:60W

	Max capacity for single port: 30W
Prior Ports	1 to 2
Standards	IEEE802.3, IEEE802.3u, IEEE802.3az, IEEE802.3x, IEEE802.3af, IEEE802.3at
Cooling Fans	0
Max.Power	65W
Operating Temperature	0°C to 45°C (32°F to 113°F)
Operating Humidity	10% to 90% (noncondensing)
Indicator	<p>POWER:</p> <p>Steady on: AC input is normal</p> <p>Off: No AC input</p> <p>No PoE Indicator</p> <p>PoE-MAX:</p> <p>off : The POE power supply power of the whole machine is less than 80% of the specification</p> <p>Steady on : The POE power supply power of the whole machine is greater than 85% of the specification</p> <p>LINK/ACT:</p> <p>Off: No link</p> <p>Steady on: Linked</p> <p>Flashing: Transmitting data</p>
Dimensions (W×D×H)	108 × 100 × 25.5 mm
Weight	0.19KG
Working Mode	Default (Normal mode) : All ports can communicate with each other, EXTEND (Surveillance mode): Transmission distance up to 250 meters
Compliance	
NDAA Compliant	Support

Dimensions



Zhejiang Uniview Technologies Co., Ltd.



<http://www.uniview.com>



overseasbusiness@uniview.com; globalsupport@uniview.com



No. 369, Xietong Road, Xixing Sub-district, Binjiang District, Hangzhou City, 310051, Zhejiang Province, China



©2023-2025 Zhejiang Uniview Technologies Co., Ltd. All rights reserved.

*Product specifications and availability are subject to change without notice.

*Despite our best efforts, technical or typographical errors may exist in this document.