

Wall Mount Mifare Card Reader

OEC-R3H-M



Overview

OEC-R3H-M wall mount Mifare card reader is a contactless IC card reader. It features high receiving sensitivity and low working current, applicable to scenarios such as access control, attendance, etc.

Features

- Supports Wiegand/RS-485 data output.
- Built-in buzzer.
- Supports indoor and outdoor application.
- Stability, sensitivity, and responsiveness.
- Supports ISO 14443-A and ISO 14443-B protocols.

Specifications

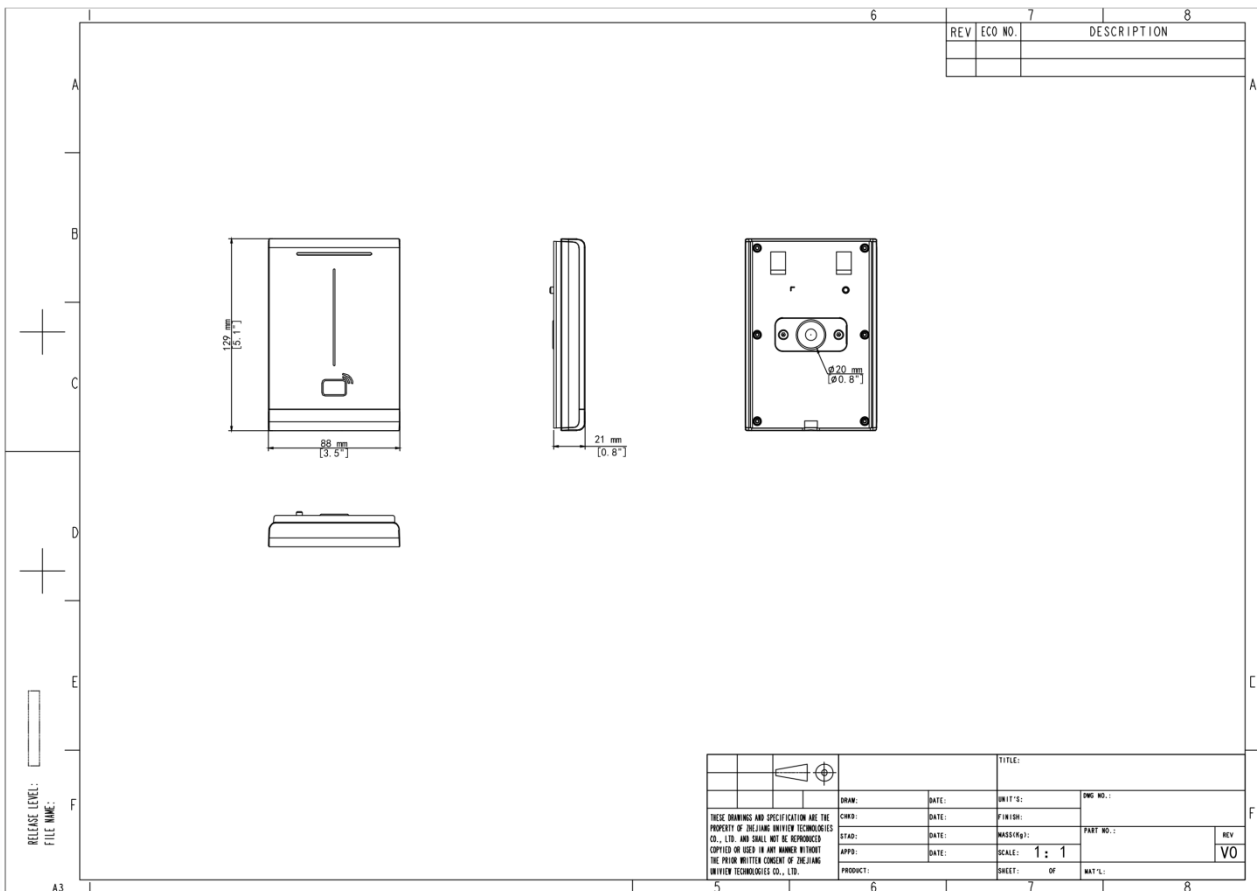
Model	OEC-R3H-M
Hardware Specification	
Operating Frequency	13.56MHz
Interface	Wiegand 26/34, RS485
Dimensions (L x W x H)	129*88*21mm
Weight	134g
Mount Method	115*73mm junction box, 86*86mm junction box
Operating Temperature	-30°C to 65°C
Operating Humidity	10% to 90%
Storage Temperature	-40°C to 65°C
Indicator	Steady blue: Normal operation;

	Steady green for 1s: Card authentication succeeded; Steady red for 1s: Card authentication failed
Power Consumption	0.732W
Operating Voltage	DC 12V ± 25%
Operating Current	61mA
Reading Distance	IC card: max. 5cm
Authentication Mode	Card
Protection Level	IP65
Physical	
Material	PC
Basic Business	
Reading Time	< 1s
Card Type	Mifare card

Ordering Info

Product Model	Description
OEC-R3H-M	Wall Mounted Mifare Card Reader

Dimensions




Unlimited New View

Zhejiang Uniview Technologies Co., Ltd.

 <http://www.uniview.com>

 overseasbusiness@uniview.com; globalsupport@uniview.com

 No. 369, Xietong Road, Xixing Sub-district, Binjiang District, Hangzhou City, 310051, Zhejiang Province, China



©2023-2025 Zhejiang Uniview Technologies Co., Ltd. All rights reserved.

*Product specifications and availability are subject to change without notice.

Despite our best efforts, technical or typographical errors may exist in this document. Uniview cannot be held responsible for any such errors and reserves the right to change the contents of this document without prior notice.