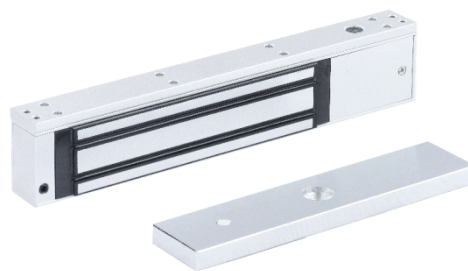


OEA-ML12-280 Single Door Magnetic Lock (280KG)

OEA-ML12-280



Overview

OEA-ML12-280 is a magnetic lock with 280kg holding force designed for single doors, which is made of high-strength aluminum alloy and suitable for wooden doors, glass doors, iron doors, security doors, etc. It features fine workmanship, high solidity, strong suction, low power consumption, high reliability, easy installation, and eco-friendliness.

Features

- 280kg holding force.
- MOV surge protection.
- No residual magnetism, abrasion resistant.
- Solid aluminum alloy housing.
- Double-insulated lock body.
- Tamper-proof screws, stable and safe.
- Supports standard single door (left-hand opening).

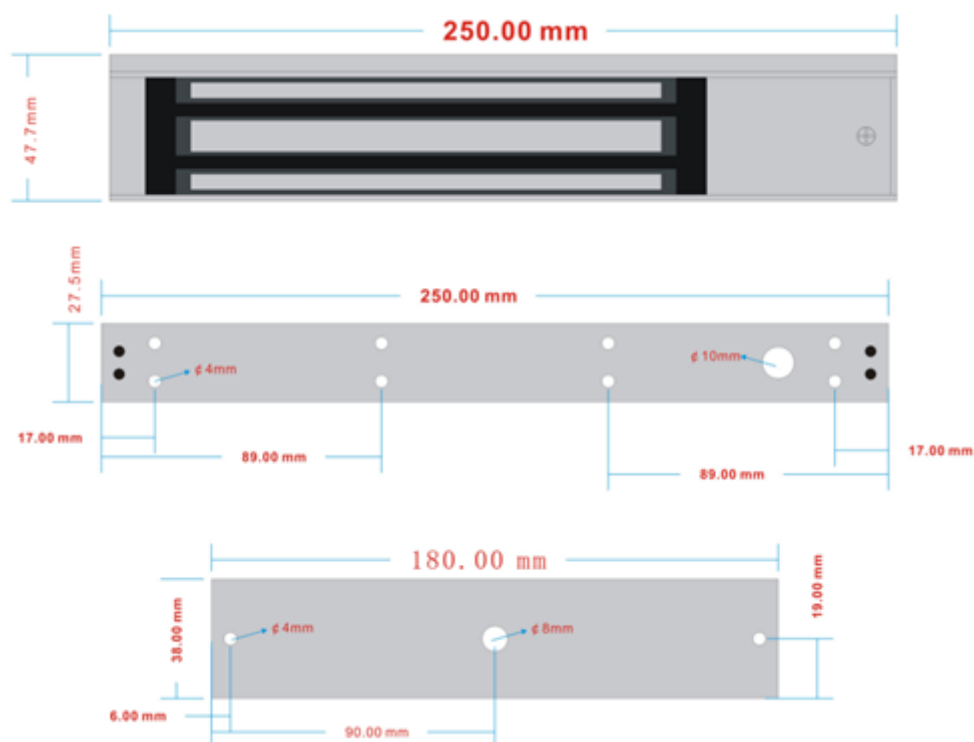
Specifications

Model	OEA-ML12-280
Hardware Specification	
Power Supply	DC12V/DC24V
Operating Current	460mA
Standby Current	460mA/230mA
Security Type	Failsafe
Operating Environment	Operating temperature: -30°C to +60°C, operating humidity: ≤95%
Weight	2kg
Dimensions (L x W x H)	Lock housing: 250×47.7×27.5; armature plate: 180×38×11.7
Door Support	Wooden door, glass door, metal door, etc.
Attestation	CE/FCC/ROHS

Ordering Info

Product Model	Description
OEA-ML12-280	Single Door Electromagnetic Lock 280KG

Dimensions



Unlimited New View

Zhejiang Uniview Technologies Co., Ltd.



<http://www.uniview.com>



overseasbusiness@uniview.com; globalsupport@uniview.com



No. 369, Xietong Road, Xixing Sub-district, Binjiang District, Hangzhou City, 310051, Zhejiang Province, China



©2023-2025 Zhejiang Uniview Technologies Co., Ltd. All rights reserved.

*Product specifications and availability are subject to change without notice.

*Despite our best efforts, technical or typographical errors may exist in this document.

Uniview cannot be held responsible for any such errors and reserves the right to change the contents of this document without prior notice.