

Cloud Managed Ethernet PoE Switch NSW3000-24T1GT1GC-POE-IN



Overview

The NSW3000 series Ethernet PoE switch is a cloud managed switch self-developed by Uniview with high performance, easy to use and maintain. The product adopts the leading high performance hardware architecture and industrial design concepts to enhance the environmental adaptability of the network. It provides a lightweight 2 layers of network basic configuration, including port mirroring, port anti-loop, VLAN, link aggregation, flow control, etc. It supports auto-discovery of connected video devices and generation of network topology; supports unified management and configuration on the software for rapid maintenance of multiple devices; and supports viewing the device status and managing devices on the Web or app. The switch meets the user's requirements to access the network with highly reliability and low cost, widely used in scenarios such as stores, supermarkets, enterprises, campuses, etc.

Features

- Supports unified configuration, management, and search on the software, convenient for rapid operation and maintenance of multiple devices; supports automatically discovering the connected video devices and generating a network topology on the software.
- Supports Web login, and device configuration and management on the Web interface; supports visiting the cloud by scanning the QR code, and allows to view the device status in real time on the app, and remotely restart the PoE power supply.
- Supports PoE power supply and allows to view the power; allows to enable or disable PoE power supply for the powered device; allows up to 250m power supply using a standard network cable.
- Supports the extend mode for up to 250m communication range and 10Mbps full-duplex port rate.
- Allows to report port abnormal alarms to the software for realtime monitoring.
- Supports port priority. The packets received by the priority port will be forwarded first and the priority port will be powered first

when the PoE power supply is full.

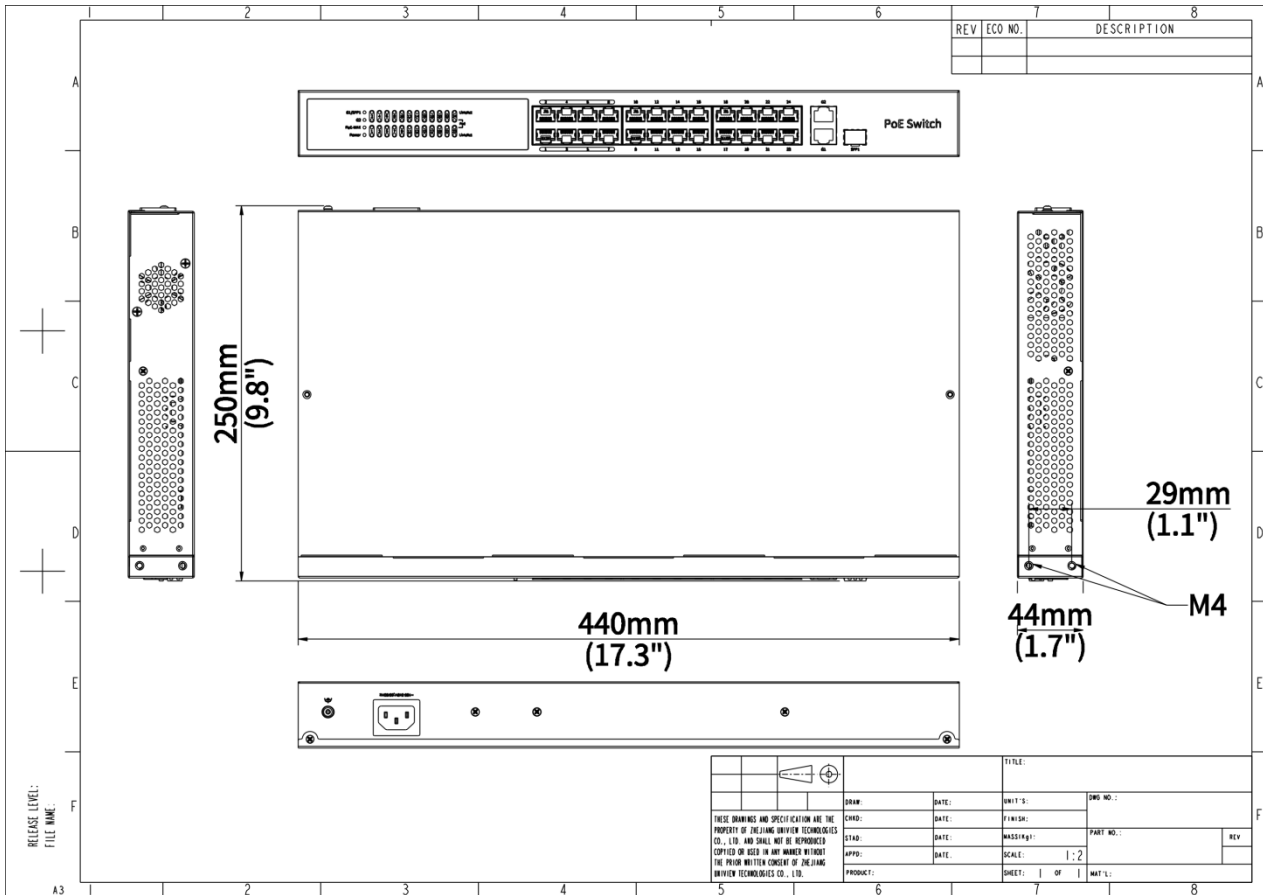
- All metal casing, secure and reliable.

Specifications

Model	NSW3000-24T1GT1GC-POE-IN
Hardware Specification	
Ports Type	24 x 10/100Mbps POE port (RJ45) + 1 x Gigabit port (RJ45) + 1 x Gigabit Combo
Standards	IEEE802.3, IEEE802.3u, IEEE802.3z, IEEE802.3ab, IEEE802.3x, IEEE802.3af, IEEE802.3at, IEEE802.3az
Switching capacity	8.8 Gbps
Forwarding performance	6.55Mpps
Packet Buffer	4 M bit
MAC	16K
Weight	2.9kg
Dimensions (W×D×H)	440mm x 244.8mm x 44mm
PoE Standard	IEEE 802.3af, IEEE 802.3 at
Max.PoE Power	Maximum total power: 370W Maximum PoE power for single port: 30W
PoE Mode	ModeA (1236), ModeB (4578)
Power Supply	AC: 100 to 240V, 50/60Hz
Max.Power	385W
Prior Ports	1 to 8
Cooling Fans	1
Operating Humidity	5% to 90% RH, noncondensing
Operating Temperature	0°C to 45°C (32°F to 113°F)
Indicator	Power: Steady on: Normal power input Off: Abnormal power input PoE: Off: The PoE port is not supplying power Steady on: The PoE port is supplying power normally Link/Act: Off: Disconnected to the port On: Connected to the port Blinking: Transmitting data MAX: Off: The total PoE power is less than 80% of the total power of the device Steady on: The total PoE power is higher than 85% of the total power of the device
Software Specification	
Ethernet	Supports full duplex, half duplex, and auto-negotiation working modes. Supports port auto-negotiation rate. Supports port priority flow control. Supports a link aggregation group (consist of two uplink ports)

	<p>Supports port flow statistics</p> <p>Supports enabling/disabling ports</p>
VLAN	Supports both access and trunk modes; allows up to 32 VLANs with IDs from 1 to 4095
MAC	<p>Support (up to 16K).</p> <p>Supports clearing the dynamic MAC address</p>
POE	<p>Allows to view PoE status and power.</p> <p>Allows to enable/disable PoE power supply.</p>
Loop Detection	Loop Detection
QoS	<p>Supports port rate limitation.</p> <p>Supports broadcast storm control.</p>
Security	<p>Supports port isolation (only for the downlink ports).</p> <p>Supports locking login IP address, up to 64 addresses can be locked</p>
Maintenance	<p>Supports N:1 port mirroring.</p> <p>Supports unified software configuration, management, and search.</p> <p>Supports discovering the connected video devices and generating a network topology on the software.</p> <p>Supports device upgrade, factory settings restoration, configuration import, configuration export, logs export, and device restart on the software.</p>
System	<p>Allows to view the device name, device model, serial number, current version, IP address, MAC address, DNS, operation time, etc.</p> <p>Allows to edit and manage the IP address and device name</p> <p>Supports single-user management, user authentication, and password modification</p> <p>Supports manual time configuration and NTP</p> <p>Allows to view other switches information on the same network, up to 32 switches</p> <p>Allows to view the connected video devices information, up to 64 devices</p>
Compliance	
NDA Compliant	Support

Dimensions



Unlimited New View

Zhejiang Uniview Technologies Co., Ltd.



<http://www.uniview.com>



overseasbusiness@uniview.com; globalsupport@uniview.com



No. 369, Xietong Road, Xixing Sub-district, Binjiang District, Hangzhou City, 310051, Zhejiang Province, China



©2023-2025 Zhejiang Uniview Technologies Co., Ltd. All rights reserved.

*Product specifications and availability are subject to change without notice.

Despite our best efforts, technical or typographical errors may exist in this document. Uniview cannot be held responsible for any such errors and reserves the right to change the contents of this document without prior notice.