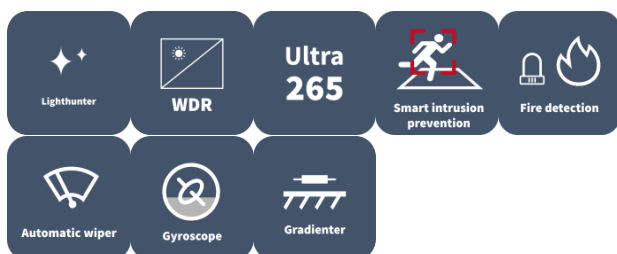


## 2MP Thermal & Optical Dual-spectrum Starlight Intelligent Positioning System

### TIC7632EL-F75-2X55G



## Features

- Thermal & Optical dual-spectrum image, dual video with single IP address, adaptable to more various scenes
- Passive infrared thermal imaging, meet the requirement of concealed monitoring and not affected by bad weather condition such as fog, smoke, rain, snow and night etc.
- Starlight illumination
- Gyroscope stabilization for stable picture
- Vari-focal laser: 800m (2624.7ft) distance, proportional to optical zoom of camera module
- 2D/3D DNR (Digital Noise Reduction)
- Smart linkage: thermal channel support fire detection, optical channel can link to the fire position and zoom in, more accurate to judge fire situation
- Smart intrusion prevention based on deep learning algorithm: cross line, enter area, leave area, intrusion, support smart tracking
- Support 1080P@60fps, which has the smoother motion image
- Ultra265, H.265, H.264, MJPEG
- Triple streams
- Customize OSD
- ONVIF Conformance
- Rain-sensing auto wiper
- Embedded gradienter to ensure the horizontal position while installation
- Power supply: DC 48V±25%、DC 24V±15%、AC 24V±25%
- Support 1/1 audio in/out, 7/2 alarm in/out, 1 Serial port RS485

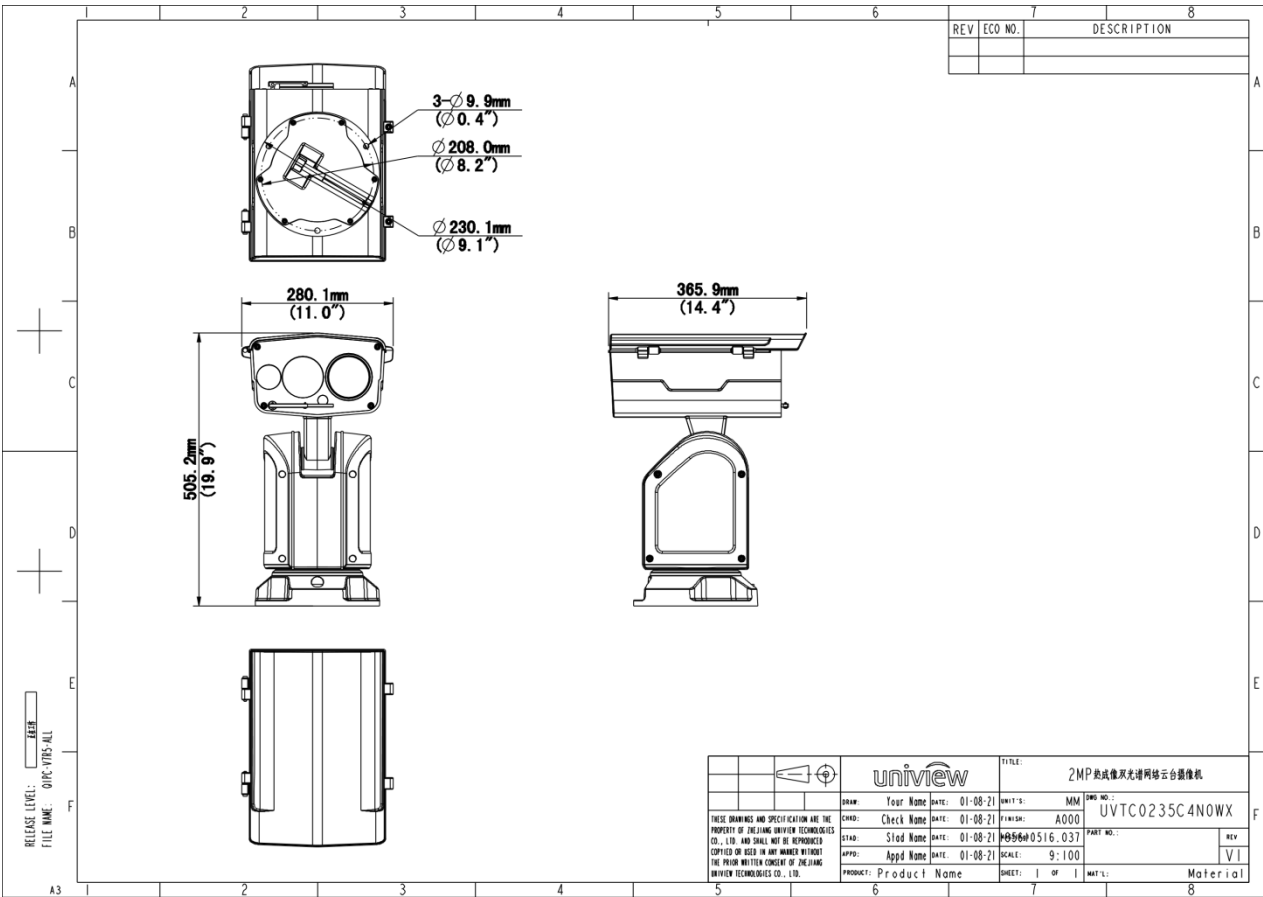
- Support up to 256G Micro SD card
- Wide temperature range: -40°C to 70°C (-40°F to 158°F)
- IP66

## Specifications

Model	TIC7632EL-F75-2X55G
<b>Camera</b>	
Pixel Size	17 um
NETD	≤ 50 mk@F1.0@23±3 °C
Shutter	Auto/Manual, 1 to 1/100000 s
WDR	120 dB
S/N	>52 dB
<b>Illuminator</b>	
Light On/Off Control	Auto/Manual
<b>Video</b>	
Video Compression	Ultra 265, H.265, H.264, MJPEG
Video Resolution	Main Stream: 2MP (1920×1080): Max.60fps; Sub Stream: 2MP (1920×1080): Max.60fps;Third Stream: D1(720 x 576): Max.60fps;
Video Bit Rate	128 Kbps to 16 Mbps
U-code	Support
ROI	Up to 8 areas
Video Stream	Triple streams
OSD	Up to 8 OSDs
Privacy Mask	24 areas, up to 8 areas per scene
<b>Image</b>	
White Balance	Auto, Outdoor, Fine tune, Sodium lamp, Locked, Auto2
Digital Noise Reduction	2D/3D DNR
Flip	Normal, Flip vertical, Flip horizontal, 180°
HLC	Support
BLC	Support
Defog	Digital defog, Optical defog
Heatwave Reduction	Support
<b>Events</b>	
Fire Detection	Support the detection of fire point in the environment and link the optical camera zoom tracking and alarm
General Function	Watermark, IP address filtering, Access policy, ARP protection, RTSP authentication, User authentication, HTTP authentication, Alarm input, Alarm output
<b>Intelligent</b>	
Exception Detection	Object removed, Object Left Behind, Scene change
Auto Tracking	Support
<b>Audio</b>	
Audio Compression	G.711U, G.711A
Audio Bitrate	128 Kbps

Two-way Audio	Support
Suppression	Support
Sampling Rate	16KHZ
<b>Storage</b>	
Edge Storage	MicroSD, up to 256 GB
Network Storage	ANR, NAS (NFS)
<b>Network</b>	
Protocols	IGMP, RTP, SMTP, IPv4, IPv6, ICMP, ARP, TCP, UDP, DHCP, PPPoE, RTSP, RTCP, RTMP, DNS, DDNS, NTP, FTP, UPnP, HTTP, HTTPS, 802.1x, SNMP, QoS, SSL/TLS, SSH
Compatible Integration	ONVIF (Profile S, Profile G, Profile T), API, SDK
User/Host	Up to 32 users. 3 user levels: administrator, common user and operator
Security	Password Protection, Strong Password, HTTPS Encryption, Export Operation Logs, Basic and Digest Authentication for RTSP, Digest Authentication for HTTP, TLS 1.2, WSSE and Digest Authentication for ONVIF
Client	EZStation, EZLive, EZView
Web Browser	Plug-in required live view: IE 10+, Chrome 45+, Firefox 52+, Edge 79+
<b>PTZ</b>	
Pan Range	360° (endless)
Pan Speed	0.1°/s ~ 140°/s
Tilt Range	-90° ~ 45°
Tilt Speed	0.1° ~ 40°/s
Number of Presets	1024
<b>Interface</b>	
Audio I/O	1 Input: impedance 35 kΩ, amplitude 2 V [p-p], 1 Output: impedance 600 Ω, amplitude 2 V [p-p]
Alarm I/O	7/2
Serial Port	1 × RS485
Network	1 × RJ45 10 M/100 M/1000 M Base-TX Ethernet + 1 × 100 M/1000 M SFP
Video Output	Supported (thermal module)
<b>General</b>	
Power	DC 48V±25%、DC 24V±15%、AC 24V±25%
Power Consumption	Max 119W
Power Interface	Two-core terminal block
Dimensions	505mm x 280mm x 366mm(19.9" x 11.0" x 14.4")
Weight	15.09kg(33.27lb)
Working Environment	-40 °C to 70 °C (-40 °F to 158 °F), Humidity: ≤ 95% RH (non-condensing)
Storage Environment	-40 °C to 70 °C (-40 °F to 158 °F), Humidity: ≤ 95% RH (non-condensing)
Surge Protection	6 KV
Reset Button	Support

## Dimensions



Accessories

TR-WM08-B

Wall Mounting Bracket for Explosion-proof  
Pan-Tilt



Zhejiang Uniview Technologies Co., Ltd.



<http://www.uniview.com>



[overseasbusiness@uniview.com](mailto:overseasbusiness@uniview.com); [globalsupport@uniview.com](mailto:globalsupport@uniview.com)



No. 369, Xietong Road, Xixing Sub-district, Binjiang District, Hangzhou City, 310051, Zhejiang Province, China  
(Zhejiang) Pilot Free Trade Zone, China



©2023-2025 Zhejiang Uniview Technologies Co., Ltd. All rights reserved.

\*Product specifications and availability are subject to change without notice.

\*Despite our best efforts, technical or typographical errors may exist in this document.

Uniview cannot be held responsible for any such errors and reserves the right to change the contents of this document without prior notice.