

Desktop Mifare Card Enroller OEC-W2D-M



Overview

OEC-W2D-M desktop Mifare card enroller can read card numbers and write data to the specified sectors of a card to achieve both read and write functions. The device is often used with UNV Guard and EZAccess.

Features

- Supports USB power supply.
- Supports Mifare card.
- Supports reading card numbers and writing data to a card's specified sectors.

Specifications

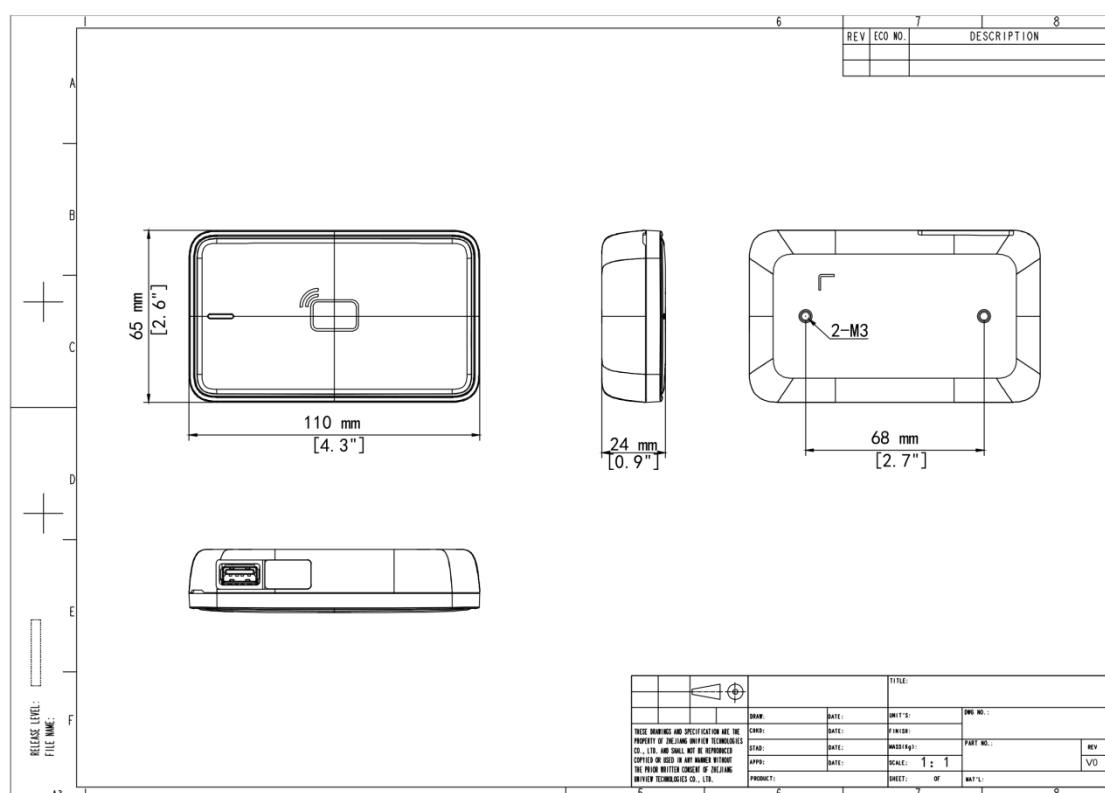
Model	OEC-W2D-M
Hardware Specification	
Material	PC
Weight	0.17kg (with package), 0.058kg (net weight)
Mount Method	Desktop mount
Power Supply	Voltage: DC 5V (powered by USB), current $\leq 116\text{mA}$
Operating Frequency	13.56MHz
Reading Distance	IC card: $\leq 3\text{cm}$
Operating Environment	Temperature: -30°C to 65°C , humidity: 10% to 90%
Dimensions (L x W x H)	110mm*65mm*24mm
Interface	USB (plug and play, driver-free)
Basic Business	
Card Protocol	ISO 14443-A, ISO 14443-B

Reading Time	< 1s
Data Format	10-digit decimal card number
Specification Index	
Application Scenario	Indoors

Ordering Info

Product Model	Description
OEC-W2D-M	Desktop Mifare Card Issuer

Dimensions



Zhejiang Uniview Technologies Co., Ltd.



<http://www.uniview.com>



overseasbusiness@uniview.com; globalsupport@uniview.com



No. 369, Xietong Road, Xixing Sub-district, Binjiang District, Hangzhou City, 310051, Zhejiang Province, China



©2023-2025 Zhejiang Uniview Technologies Co., Ltd. All rights reserved.

*Product specifications and availability are subject to change without notice.

*Despite our best efforts, technical or typographical errors may exist in this document.