

4MP+6MP 42X Wise-ISP MultiView Dual-light Network PTZ Camera

IPC98246EFW-X42-W-VH1



Features

- Panoramic dual-lens splicing, three-lens design, capturing both the big picture and details at the same time.
- Both the panorama and details channels utilize 1/1.8" high-sensitivity CMOS sensors to capture clear images even when light level drops to almost zero at night.
- Panorama adopts the cutting-edge splicing technology to output a horizontal 200° and vertical 80° stitched image for wide scenes.
- Panorama supports a maximum of 3680 × 1656@30 fps HD video output, while details supports a maximum of 2688 × 1520@30 fps HD video output.
- Dual-channel with one IP, providing a panoramic view and live details at the same time.
- Built-in Wise-ISP algorithm enables intelligent noise reduction and stunning visual effects in low-light conditions.
- Panorama supports motorized vertical adjustment from 0° to 30° to deal with complex scenes.
- Supports panoramic linkage: After an event is detected by the panorama channel, the camera automatically triggers the details channel to track the target and capture snapshots. The supported events include intrusion detection, cross line detection, enter area, and leave area.
- Supports drag-to-zoom: User can drag on the panoramic image to view the magnified details of the area of interest at the center of the details channel.
- Supports multiple deep-learning video content analysis, including smart intrusion prevention (SIP) and people flow counting for the panorama channel, and SIP, people flow counting, multi-target detection, and automatic tracking for the details channel.
- Perimeter protection: supports cross line, enter area, leave area, and intrusion detection; supports classifying and detecting motor vehicles, non-motor vehicles, pedestrians, and triggering alarms.

- Multi-target detection: supports classifying, detecting, and capturing motor vehicles, non-motor vehicles, and pedestrians; supports metadata extraction for motor vehicles, non-motor vehicles, faces, and human bodies.
- People counting: including people flow counting and crowd density monitoring, suitable for various application scenarios.
- Auto tracking: supports classifying and tracking motor vehicles, non-motor vehicles, and pedestrians, and returning to the initial position at the end of the set tracking time.
- Supports optical defog, automatically adjusts the defog level as needed.
- Full-spectrum illumination: 30 m warm light illumination for panorama, and 350 m IR illumination for details.
- Adaptive highlight compensation automatically adjusts image brightness at night when there are moving vehicles on the road.
- IP67 protection.

Specifications

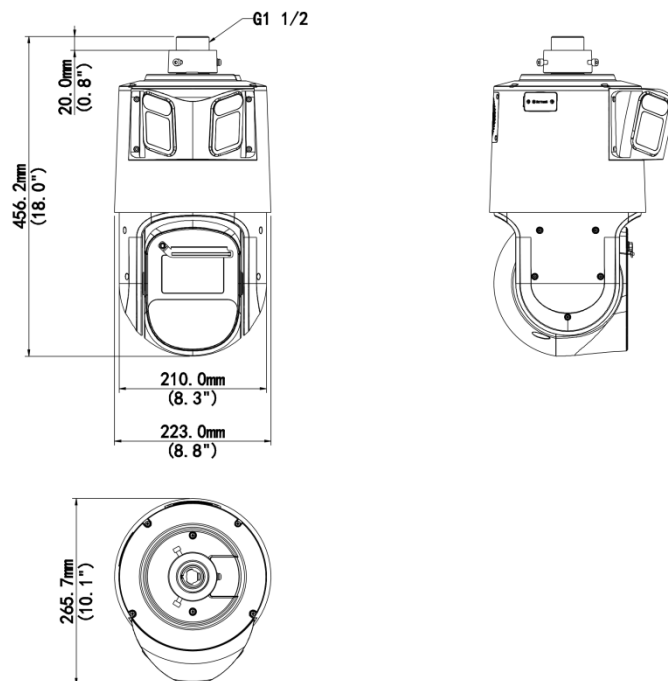
Channel	Channel 1 (Panorama)	Channel 2 (Detail)
Camera		
Sensor	1/1.8" CMOS	
Max Resolution	6 MP	4 MP
Min. Illumination	Color: 0.0005 lux (F1.2, AGC ON) 0 lux with IR	
Shutter	Auto/Manual, 1 to 1/100000 s	
WDR	120 dB	
S/N	>56 dB	
Lens		
Digital Zoom	N/A	16X
Optical Zoom	N/A	42X
Field of View (H)	200° ± 5°	59.47° ~ 2.20°
Field of View (V)	78°	35.62° ~ 1.24°
DORI		
DORI Distance (Lens)	2.2mm	6 ~ 252mm
DORI Distance (Detect)	34.1m (112.0ft)	107.2m (351.8ft) ~ 3330.6m (10927.2ft)
DORI Distance (Observe)	13.7m (44.8ft)	42.9m (140.7ft) ~ 1332.2m (4370.9ft)
DORI Distance (Recognize)	6.8m (22.4ft)	21.4m (70.4ft) ~ 666.1m (2185.4ft)
DORI Distance (Identify)	3.4m (11.2ft)	10.7m (35.2ft) ~ 333.1m (1092.7ft)
Intelligent		
Metadata Analyse	Support human body, human face, motor vehicle and non-motor vehicle image capture and attribute collection	
Linkage Function	Support. Triggered by fixed lens via smart intrusion prevention function to track target	
People Counting	Support people flow counting and crowd density monitoring	

Smart Intrusion Prevention	Cross line detection, intrusion detection, enter area detection, leave area detection (support false alarm filtering and the classification of human, non-motor vehicle and vehicle)	
Multi-target Detection	N/A	Support
Auto Tracking	N/A	Support, target filtering: human, non-motor vehicle and vehicle
Image		
Defog	Digital defog	Optical defog
White Balance	Auto, Outdoor, Fine tune, Sodium lamp, Locked, Auto2	
Smart IR	N/A	Support
Flip	Flip vertical	Normal, Flip vertical, Flip horizontal, 180°
HLC	Support	
BLC	Support	
Heatwave Reduction	N/A	Support
Illuminator		
Light On/Off Control	Auto/Manual	
Illumination Distance (VF laser)	N/A	350 m (1148.2 ft)
Illumination Distance (Warm Light)	30 m (98.4 ft)	N/A
Video		
Frame Rate-Main Stream	6MP (3680*1656), Max 30fps; 6MP (3632*1632), Max 30fps; 1200*536, Max 30fps; 960*432, Max 30fps;	4MP (2688*1520), Max 30fps; 4MP (2560*1440), Max 30fps; 2MP (1920*1080), Max 30fps; 720P (1280*720), Max 30fps; D1 (720*576), Max 30fps; 640*360, Max 30fps;
Frame Rate-Sub Stream	1200*536, Max 30fps; 960*432, Max 30fps;	2MP (1920*1080), Max 30fps; 720P (1280*720), Max 30fps; D1 (720*576), Max 30fps; 640*360, Max 30fps;
Frame Rate-Third Stream	960*432, Max 30fps;	D1 (720*576), Max 30fps; 640*360, Max 30fps; 2CIF (704*288), Max 30fps; CIF (352*288), Max 30fps;
Frame Rate Recommendation	3680*1656@30fps+1200*536@30fps+960*432@30fps 3632*1632@30fps+1200*536@30fps+960*432@30fps	2688*1520@30fps+1080P@30fps+D1@30fps 2560*1440@30fps+1080P@30fps+D1@30fps
Privacy Mask	24 areas, up to 8 areas per scene	
Video Compression	Ultra 265, H.265, H.264, MJPEG	
Video Bit Rate	128 Kbps to 16 Mbps	
U-code	Support	
ROI	Up to 8 areas	
Video Stream	Triple streams	

OSD	Up to 10 OSDs	
Events		
Basic Detection	Motion detection, Audio detection, Tampering alarm, Ultra motion detection	
General Function	Watermark, IP address filtering, Alarm input, Alarm output, Access policy, ARP protection, RTSP authentication, User authentication, HTTP authentication	Watermark, IP address filtering, Access policy, Alarm output, Alarm input, User authentication, RTSP authentication, ARP protection, HTTP authentication
PTZ		
Pan Range	N/A	360°
Pan Speed	N/A	0.1°/s ~ 180°/s
Tilt Range	0° ~ 30°	-15° ~ 90°
Tilt Speed	N/A	0.1°/s ~ 180°/s
Number of Presets	N/A	1024
Preset Patrol	N/A	16 patrols, up to 64 presets for each patrol
Preset Image Freeze	N/A	Support
Home Position	N/A	Support
3D Location	N/A	Support
Number of Patrol	N/A	16
Snow Removal Mode	N/A	Support
Patrol Recording	N/A	Support
Audio		
Audio Compression	G.711U, G.711A	
Audio Bitrate	128 Kbps	
Two-way Audio	Support	
Suppression	Support	
Sampling Rate	8 kHz, 16 kHz	
Storage		
Edge Storage	Micro SD, up to 512 GB	
Network Storage	ANR, NAS (NFS)	
Network		
Protocols	SSH, IGMP, RTP, RTCP, SMTP, IPv4, IPv6, ICMP, ARP, TCP, UDP, DHCP, PPPoE, RTSP, RTMP, DNS, DDNS, NTP, FTP, UPnP, HTTP, HTTPS, 802.1x, SNMP, QoS, SSL/TLS	
Compatible Integration	ONVIF (Profile S, Profile G, Profile T, Profile M), API, SDK	ONVIF (Profile S, Profile G, Profile T), API, SDK
User/Host	Up to 32 users. 3 user levels: administrator, common user and operator	
Security	TLS 1.3, Password Protection, Strong Password, HTTPS Encryption, Export Operation Logs, Basic and Digest Authentication for RTSP, Digest Authentication for HTTP, TLS 1.2, WSSE and Digest Authentication for ONVIF	
Client	EZStation, UNV-Link, UNV-Link Pro	
Web Browser	Plug-in required live view: IE 10+, Chrome 45+, Firefox 52+, Edge 79+	
Interface		

Audio I/O	1 Input: impedance 1 kΩ, amplitude 2.5 V [p-p], 1 Output: impedance 600 Ω, amplitude 2 V [p-p]	
Alarm I/O	7/2	
Serial Port	1 channel RS485 interface	
Built-in Speaker	Support	
Network	1 × RJ45 1000 M Base-TX Ethernet	
Certification		
EMC	CE-EMC (EN 55032: 2015+A1: 2020, EN 61000-3-3: 2013+A1: 2019, EN IEC 61000-3-2: 2019+A1: 2021, EN 55035: 2017+A11: 2020) FCC (FCC CFR 47 part15 B, ANSI C63.4-2014)	
Safety	CE LVD (EN 62368-1:2014+A11:2017) UL (UL 62368-1, 2nd Ed., Issue Date: 2014-12-01)	
Environment	CE-RoHS (2011/65/EU; (EU) 2015/863)	
Protection	IP67 (IEC 60529: 1989+AMD1: 1999+AMD2: 2013)	
General		
Power	DC24V (±25%), AC24V (±25%), POE (IEEE802.3bt)	
Power Consumption	74W MAX	
Power Interface	Wires with cold-pressed terminal	
Dimensions	456 x 223 x 266 mm (17.95" x 8.78" x 10.47") (L x W x H)	
Weight	8.4kg	
Working Environment	-40 °C to 70 °C (-40 °F to 158 °F), Humidity: ≤ 95% RH (non-condensing)	
Storage Environment	-40 °C to 70 °C (-40 °F to 158 °F), Humidity: ≤ 95% RH (non-condensing)	
Surge Protection	6KV	
Web Client Language	22 Languages: Traditional Chinese, English, Simplified Chinese, Polish, German, Russian, French, Korean, Dutch, Czech, Portuguese (Europe), Portuguese (Brazil), Japanese, Thai, Turkish, Spanish (Latin America), Spanish (Europe), Hungarian, Italian, Vietnamese, Arabic, Slovak	
Live View		
Maximum Bitstream	35	
Maximum Bandwidth	50Mbps	
3D Privacy Mask	N/A	Support

Dimensions



Zhejiang Uniview Technologies Co., Ltd.

No. 369, Xietong Road, Xixing Sub-district, Binjiang District, Hangzhou City, 310051, Zhejiang Province, China

Email: overseasbusiness@uniview.com; globalsupport@uniview.com

<http://www.uniview.com>

©2024-2025 Zhejiang Uniview Technologies Co., Ltd. All rights reserved.

*Product specifications and availability are subject to change without notice.

*Despite our best efforts, technical or typographical errors may exist in this document. Uniview cannot be held responsible for any such errors and reserves the right to change the contents of this document without prior notice.