

4MP+4MP LightHunter Dual-lens Network PTZ Camera

IPC94144SFW-X25-F40C



Features

- Fixed camera and PTZ camera integration, dual channels with one IP, look at overall situation and consider details at the same time
- Ultra 265, H.265, H.264, MJPEG
- 25X optical zoom of PTZ channel allows for closer viewing of subjects
- Smart intrusion prevention, support false alarm filtering, include Cross Line, Intrusion, Enter Area, Leave Area detection
- People Counting, support people flow counting and crowd density monitoring, suitable for different statistical scenarios
- PTZ channel can be linked to fixed channels smart intrusion prevention to track the objects triggering the rule
- Support sound and light warning, makes warning and alarming more noticeable
- LightHunter technology ensures ultra-high image quality in low illumination environment
- IR & warm light illumination to deal with different scenes and achieve full-color illumination
- DC12V or PoE+(IEEE 802.3at) power supply
- Alarm 2 in and 1 out, Audio 1 in and 1 out

Specifications

Channel	Channel 1 (Panorama)	Channel 2 (Detail)
Camera		
Min. Illumination	Color: 0.003 lux (F1.6, AGC ON) 0 lux with IR	Color: 0.003 lux (F1.5, AGC ON) 0 lux with IR
Day/Night	IR-cut filter with auto switch (ICR)	
Shutter	Auto/Manual, 1 to 1/100000 s	
WDR	120 dB	
S/N	>56 dB	
Lens		
Focal Length	4.8 to 120 mm	
Optical Zoom	N/A	25X
Iris	F1.5 to F3.8	
Field of View (H)	91.3°	55.46° ~ 3.09°
Field of View (V)	46.7°	32.94° ~ 1.73°
Field of View (D)	112.3°	68.22° ~ 3.65°
DORI		
DORI Distance (Detect)	90.0m (295.3ft)	123.8m ~ 2475.0m (406.0ft ~ 8120.1ft)
DORI Distance (Observe)	36.0m (118.1ft)	49.5m ~ 990.0m (162.4ft ~ 3248.0ft)
DORI Distance (Recognize)	18.0m (59.1ft)	24.8m ~ 495.0m (81.2ft ~ 1624.0ft)
DORI Distance (Identify)	9.0m (29.5ft)	12.4m ~ 247.5m (40.6ft ~ 812.0ft)
Illuminator		
Illumination Distance (Warm Light)	30 m (98.4 ft)	N/A
Illumination Distance (IR)	N/A	100 m (328.1 ft)
Wavelength	N/A	850 nm

Supplemental Light	Warm light	
Light On/Off Control	Auto/Manual	
PTZ		
Pan Range	N/A	360°
Pan Speed	N/A	0.1°/s ~ 80°/s
Tilt Speed	N/A	0.1°/s ~ 80°/s
Tilt Range	18° ± 5°	-15° ~ 90°
Number of Presets (IPC)	N/A	1024
Number of Presets	N/A	1024
Preset Patrol	N/A	16 patrols, up to 64 presets for each patrol
Route Patrol	N/A	16 patrols, up to 32 actions for each patrol
Recorded Patrol	N/A	16 patrols, up to 128 actions for each patrol
Patrol Stay Time	15 s to 1800 s	
Preset Image Freeze	N/A	
Home Position	N/A	Support
Video		
Frame Rate	Main Stream: 4MP (2688×1520), Max 30fps; Sub Stream: 720P (1280×720), Max 30fps; Third Stream: D1 (720×576), Max 30fps;	Main Stream: 4MP (2688×1520), Max 30fps; Sub Stream: 1080P (1920×1080), Max 30fps; Third Stream: D1 (720×576), Max 30fps;
Privacy Mask	Up to 4 areas	24 areas, up to 4 areas per scene
Frame Rate-Main Stream	4MP (2688 × 1520) @ 25 fps (Default) 4MP (2688 × 1520), Max 30fps; 4MP (2560 × 1440), Max 30fps; 2MP (1920 × 1080), Max 30fps; 720P (1280 × 720), Max 30fps; D1 (720 × 576), Max 30fps; 640 × 360, Max 30fps;	
Frame Rate-Sub Stream	720P (1280 × 720), Max 30fps; D1 (720 × 576), Max 30fps; 640 × 360, Max 30fps;	2MP (1920 × 1080), Max 30fps; 720P (1280 × 720), Max 30fps; D1 (720 × 576), Max 30fps; 640 × 360, Max 30fps;

Frame Rate-Third Stream	D1 (720 × 576), Max 30fps; 640 × 360, Max 30fps; 2CIF (704 × 288) , Max 30fps; CIF (352 × 288) , Max 30fps;	
Frame Rate Recommendation	2688 × 1520@30fps+720P@30fps+D1@16fps 2688 × 1520@30fps+720P@25fps+D1@30fps 2688 × 1520@25fps+720P@25fps+D1@25fps 2560 × 1440@30fps+720P@30fps+D1@30fps 2560 × 1440@30fps+720P@25fps+D1@30fps 2560 × 1440@25fps+720P@25fps+D1@25fps 1080P@30fps+720P@30fps+D1@30fps 1080P@25fps+720P@25fps+D1@25fps	2688 × 1520@30fps+1080P@30fps+D1@16fps 2688 × 1520@30fps+1080P@25fps+D1@30fps 2688 × 1520@25fps+1080P@25fps+D1@25fps 2560 × 1440@30fps+1080P@30fps+D1@30fps 2560 × 1440@30fps+1080P@25fps+D1@30fps 2560 × 1440@25fps+1080P@25fps+D1@25fps 1080P@30fps+1080P@30fps+D1@30fps 1080P@25fps+1080P@25fps+D1@25fps
Video Compression	Ultra 265, H.265, H.264, MJPEG	
Video Bit Rate	128 Kbps to 16 Mbps	
U-code	Support	
ROI	Support	
Video Stream	Triple Streams	
OSD	Up to 8 OSDs	
Image		
Defog	Digital Defog	
White Balance	Auto, Outdoor, Fine Tune, Sodium Lamp, Locked, Auto2	
Digital Noise Reduction	2D/3D DNR	
Smart IR	Support	
Flip	Normal, Flip Vertical, Flip Horizontal, 180°	
HLC	Support	
BLC	Support	
Heatwave Reduction	Support	
Intelligent		
People Counting	Support People Flow Counting and Crowd Density Monitoring	
Linkage Function	Support. Triggered by fixed lens via smart intrusion prevention function to track target	N/A
Smart Intrusion Prevention	Cross line detection, intrusion detection (support false alarm filtering and the classification of human, non-motor vehicle and vehicle)	

Events

Basic Detection	Motion Detection, Audio Detection, Tampering Alarm
General Function	Watermark, IP Address Filtering, Access Policy, ARP Protection, RTSP Authentication, User Authentication, Alarm Input, Alarm Output

Audio

Audio Compression	G.711U, G.711A
Audio Bitrate	128 Kbps
Two-way Audio	Support
Suppression	Support
Sampling Rate	16 kHz

Storage

Edge Storage	Micro SD, up to 512 GB
Network Storage	ANR

Network

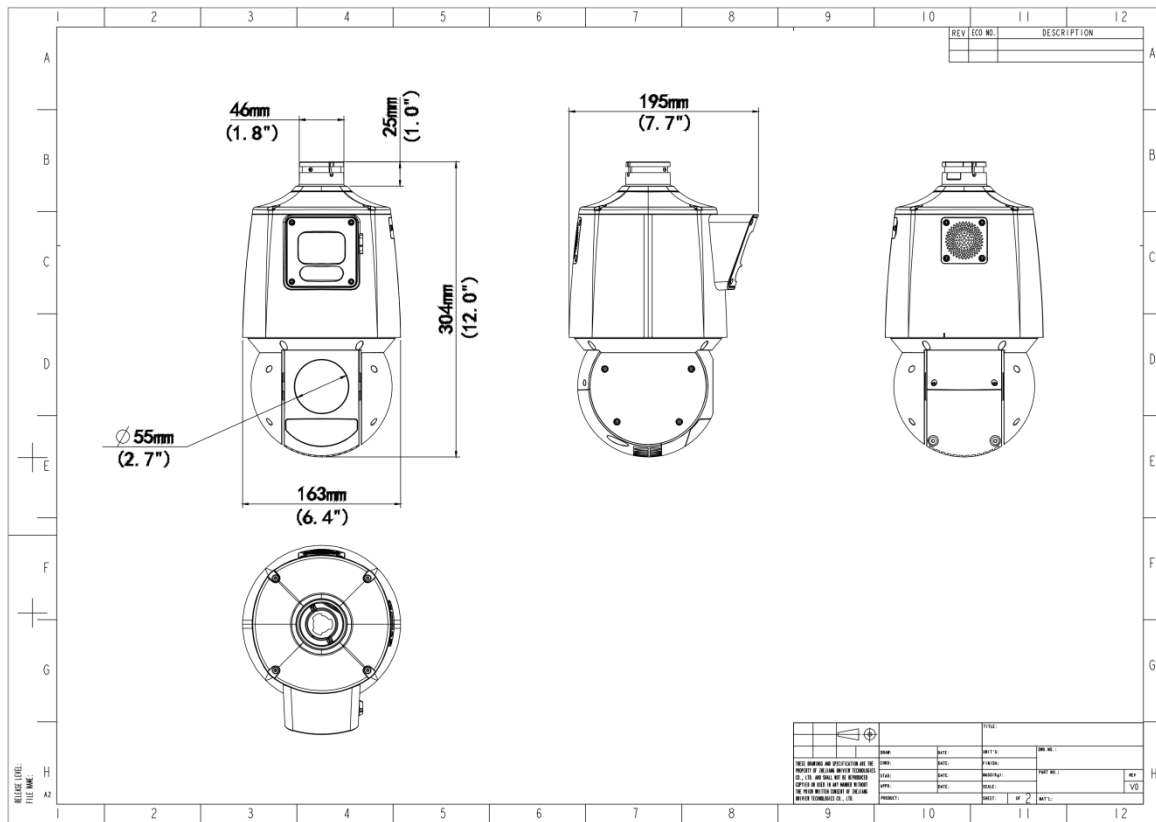
Protocols	SSH, IGMP, RTP, RTCP, SMTP, IPv4, IPv6, ICMP, ARP, TCP, UDP, DHCP, PPPoE, RTSP, RTMP, DNS, DDNS, NTP, FTP, UPnP, HTTP, HTTPS, 802.1x, SNMP, QoS, SSL/TLS	
Compatible Integration	ONVIF (Profile S, Profile G, Profile T, Profile M), API, SDK	
User/Host	Up to 32 users. 3 user levels: administrator, common user and operator	
Security	TLS1.3, Password Protection, Strong Password, HTTPS Encryption, Export Operation Logs, Basic and Digest Authentication for RTSP, Digest Authentication for HTTP, TLS 1.2, WSSE and Digest Authentication for ONVIF	Password Protection, Strong Password, HTTPS Encryption, Export Operation Logs, Basic and Digest Authentication for RTSP, Digest Authentication for HTTP, TLS 1.2, WSSE and Digest Authentication for ONVIF, TLS1.3
Client	EZStation, UNV-Link, UNV-Link Pro	
Web Browser	Plug-in required live view: IE 10+, Chrome 45+, Firefox 52+, Edge 79+	

Interface

Audio I/O	1/1, 1 Output: impedance 600 Ω , amplitude 2 V [p-p]
Alarm I/O	2/1
Serial Port	1 channel RS485 interface
Built-in Mic	N/A
Built-in Speaker	Support
WIFI	N/A

Network	1 × RJ45 10 M/100 M Base-TX Ethernet
Video Output	N/A
Certification	
EMC	CE-EMC (EN 55032: 2015+A1: 2020, EN 61000-3-3: 2013+A1: 2019, EN IEC 61000-3-2: 2019+A1: 2021, EN 55035: 2017+A11: 2020) FCC (FCC CFR 47 part15 B, ANSI C63.4-2014)
Safety	CE LVD (EN 62368-1: 2014+A11: 2017) UL (UL 62368-1, 2nd Ed , Issue Date: 2014-12-01)
Environment	CE-RoHS (2011/65/EU; (EU) 2015/863)
Protection	IP66 (IEC 60529 : 1989+AMD1: 1999+AMD2: 2013)
General	
Power	DC12V (±25%), PoE+ (IEEE 802.3at)
Power Consumption	MAX 24W
Power Interface	Ø5.5 mm coaxial power plug
Dimensions	304 x 195 x 163mm (12.0" x 7.7" x 6.4") (L x W x H)
Weight	2.27kg (5.00lb)
Working Environment	-40 °C to 65 °C (-40 °F to 149 °F), Humidity: ≤ 95% RH (non-condensing)
Storage Environment	-40 °C to 70 °C (-40 °F to 158 °F), Humidity: ≤ 95% RH (non-condensing)
Surge Protection	4 KV
Reset Button	Support
Web Client Language	22 Languages Traditional Chinese, English, Simplified Chinese, Polish, German, Russian, French, Korean, Dutch, Czech, Portuguese (Europe), Portuguese (Brazil), Japanese, Thai, Turkish, Spanish (Latin America), Spanish (Europe), Hungarian, Italian, Vietnamese, Arabic, Slovak

Dimensions



Accessories

TR-UF45-A-IN

Dome Indoor Ceiling Mounting Pedestal



TR-SE45-A-IN

Dome Ceiling Mounting Pole 500



TR-SE45-IN

Dome Ceiling Mounting Pole 200



TR-CE45-IN

Dome Indoor Ceiling Mounting Bracket



TR-WE45-IN

Dome Wall Mounting Bracket



TR-WE45-A-IN

Long Wall Mounting Bracket for Dome



TR-WE45-B-IN

Dome Gooseneck Bracket



TR-JB12-IN

Dome Junction Box



TR-UP08-A-IN

Dome Pole Mounting Bracket



TR-UP08-B-IN

Aluminium Alloy Pole Mounting Bracket



TR-UC08-A-IN

Dome Corner Mounting Bracket



TR-UC08-B-IN

Aluminium Alloy Corner Mounting Bracket



Zhejiang Uniview Technologies Co., Ltd.

No. 369, Xietong Road, Xixing Sub-district, Binjiang District, Hangzhou City, 310051, Zhejiang Province, China (Zhejiang) Pilot Free Trade Zone, China

Email: overseasbusiness@uniview.com; globalsupport@uniview.com

<http://www.uniview.com>

©2023-2024 Zhejiang Uniview Technologies Co., Ltd. All rights reserved.

*Product specifications and availability are subject to change without notice.

*Despite our best efforts, technical or typographical errors may exist in this document. Uniview cannot be held responsible for any such errors and reserves the right to change the contents of this document without prior notice.