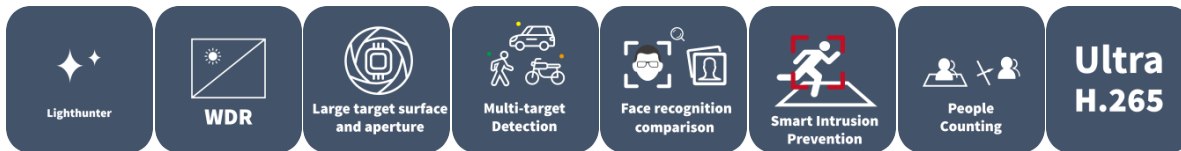


8MP+4MP Bi-Channel LightHunter Intelligent Bullet Network Camera

IPC28184EA-ADX5K-F40-I1



Features

- One IP with two channels, combines the details and full view, making target area stand out without losing overall view
- 3840*2160@30fps in the main stream of detailed channel with ISP algorithm, provide high definition image
- Ultra 265, H.265, H.264, MJPEG
- Built-in dual Mic, efficiently realizes the noise control by noise reduction algorithm
- Two types of illumination light, offer three illumination modes and support sound-light warning
- Detailed channel supports electric control and tilt angle adjustment, easier for installation and debugging
- Switching among three Intelligent functions, suitable for various application scenes
- Smart intrusion prevention, support false alarm filtering, realize accurate detection based on specific target
- LightHunter technology ensures ultra-high image quality in low illumination environment
- Audio 2 in and 1 out, Alarm 3 in and 2 out

Specifications

Channel	Channel 1	Channel 2
---------	-----------	-----------

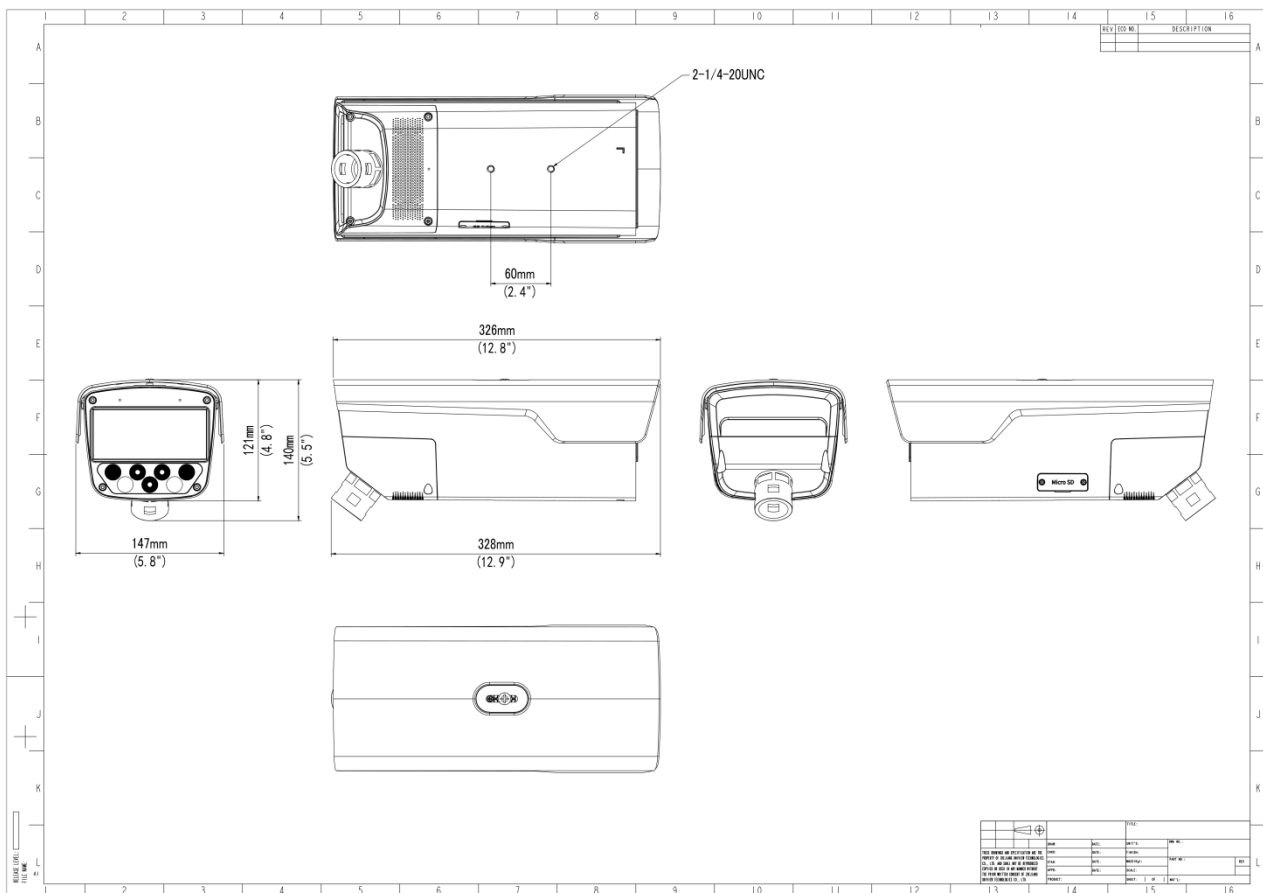
Camera		
Max Resolution	4 MP	8 MP
Sensor	1/1.8" CMOS	
Min. Illumination	Colour:0.0005lux (F1.0, AGC ON)	Colour:0.005lux (F1.6, AGC ON) 0 lux with IR
Day/Night	N/A	IR-cut filter with auto switch (ICR)
Shutter	Auto/Manual, 1 to 1/100000 s	
Adjustment Angle	Tilt: -10° to 10° (electric control , for installation and debugging)	
WDR	120 dB	
S/N	>56 dB	
Lens		
Focal Length	4.0 mm	10 to 50 mm
Optical Zoom	N/A	5X
Iris Type	Fixed	DC-iris
Iris	F1.0	F1.6
Field of View (H)	94.7°	33.8°~8.4°
Field of View (V)	50.3°	18.8°~4.6°
Field of View (D)	116.5°	39.9°~10.0°
DORI		
DORI Distance (Detect)	79.1m(259.6ft)	292.5m(959.6ft)~1237.5m(4060.0ft)
DORI Distance (Observe)	31.7m(103.9ft)	117.0m(383.9ft)~495.0m(1624.0ft)
DORI Distance (Recognize)	15.8m(51.9ft)	58.5m(191.9ft)~247.5m(812.0ft)
DORI Distance (Identify)	7.9m(26.0ft)	29.3m(96.0ft)~123.8m(406.0ft)
Illuminator		
Illumination Distance (Warm Light)	Up to 30m (98.43ft)	
Illumination Distance (IR)	N/A	Up to 50m (164.0ft)
Wavelength	N/A	750 nm
Light On/Off Control	Auto/Manual	
Video		
Video Compression	Ultra 265, H.265, H.264, MJPEG	

Frame Rate-Main Stream	4MP(2688*1520), Max 30fps	8MP(3840*2160), Max 30fps
Frame Rate-Sub Stream	2MP (1920*1080), Max 30fps	
Frame Rate-Third Stream	D1 (720*576), Max 30fps	
Video Bit Rate	128 Kbps to 16 Mbps	
U-code	Support	
ROI	Support	
Video Stream	Triple Streams	
OSD	Up to 10 OSDs	
Image		
White Balance	Auto, Outdoor, Fine Tune, Sodium Lamp, Locked, Auto2	
Digital Noise Reduction	2D/3D DNR	
Smart IR	Support	
Flip	Normal, Flip Vertical, Flip Horizontal, 180°, 90° Clockwise, 90° Anti-clockwise	
HLC	Support	
BLC	Support	
Defog	Digital Defog	
Intelligent		
Smart Intrusion Prevention	Cross line detection, intrusion detection, enter area detection, leave area detection (support false alarm filtering and the classification of human, non-motor vehicle and vehicle)	
Recognition	N/A	Face Recognition: Max support 16 face libraries, Max supports 100000 faces in face library
Metadata Analyse	N/A	Support human body, human face, motor vehicle and non-motor vehicle image capture and attribute collection
People Counting	N/A	Support People Flow Counting and Crowd Density Monitoring
Events		
Basic Detection	Motion Detection, Tampering Alarm, Audio Detection	Motion Detection, Tampering Alarm, Audio Detection, Object Removed, Object Left Behind
General Function	Watermark, IP Address Filtering, Access Policy, ARP Protection, RTSP Authentication, User Authentication, HTTP Authentication, Alarm Input, Alarm Output	
Audio		
Audio Compression	G.711U, G.711A	

Audio Bitrate	128 Kbps
Two-way Audio	Support
Suppression	Support
Sampling Rate	16KHZ
Storage	
Edge Storage	Micro SD, up to 512 GB
Network Storage	ANR, NAS (NFS)
Network	
Protocols	SSH, IGMP, RTP, RTCP, SMTP, IPv4, IPv6, ICMP, ARP, TCP, UDP, DHCP, PPPoE, RTSP, RTMP, DNS, DDNS, NTP, FTP, UPnP, HTTP, HTTPS, 802.1x, SNMP, QoS, SSL/TLS
Compatible Integration	ONVIF (Profile S, Profile G, Profile T, Profile M), API, SDK
User/Host	Up to 32 users. 3 user levels: administrator, common user and operator
Security	TLS1.3, Password Protection, Strong Password, HTTPS Encryption, Export Operation Logs, Basic and Digest Authentication for RTSP, Digest Authentication for HTTP, TLS 1.2, WSSE and Digest Authentication for ONVIF
Client	EZStation, UNV-Link, UNV-Link Pro
Web Browser	Plug-in required live view: IE 10+, Chrome 45+, Firefox 52+, Edge 79+
Interface	
Audio I/O	2 Input: impedance 1 k Ω , amplitude 2.5 V [p-p], 1 Output: impedance 600 Ω , amplitude 2.5 V [p-p]
Alarm I/O	3/2
Serial Port	1 channel RS485 interface
Built-in Mic	Built-in two mics
Built-in Speaker	Support
Network	1 \times RJ45 10 M/100 M/1000 M Base-TX Ethernet
Certification	
EMC	CE-EMC (EN 55032: 2015+A1:2020,EN 61000-3-3: 2013+A1: 2019,EN IEC 61000-3-2: 2019+A1: 2021,EN 55035: 2017+A11:2020) FCC (FCC CFR 47 part15 B, ANSI C63.4-2014)
Safety	CE LVD (EN 62368-1:2014+A11:2017) UL (UL 62368-1, 2nd Ed., Issue Date: 2014-12-01)
Environment	CE-RoHS (2011/65/EU;(EU)2015/863); WEEE (2012/19/EU); Reach (Regulation (EC) No 1907/2006)
Protection	IP66 (IEC 60529:1989+AMD1:1999+AMD2:2013)

General	
Power	AC 24 V±25%
Power Consumption	Max 31w
Power Interface	Wires with cold-pressed terminal
Dimensions	326 x 147 x 121 mm (12.8" x 5.8" x 4.8") (L x W x H)
Weight	2.11kg
Working Environment	-30 °C to 60 °C (-22 °F to 140 °F), Humidity: ≤ 95% RH (non-condensing)
Storage Environment	-40 °C to 70 °C (-40 °F to 158 °F), Humidity: ≤ 95% RH (non-condensing)
Surge Protection	6 KV
Reset Button	Support
Web Client Language	22 Languages: Traditional Chinese, English, Simplified Chinese, Polish, German, Russian, French, Korean, Dutch, Czech, Portuguese (Europe), Portuguese (Brazil), Japanese, Thai, Turkish, Spanish (Latin America), Spanish (Europe), Hungarian, Italian, Vietnamese, Arabic, Slovak

Dimensions



Accessories

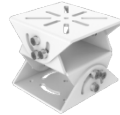
TR-CM06-IN

Box Housing Ceiling Mounting Bracket

et

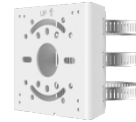
TR-UV06-A-IN

3D Adjustable Mounting Bracket



TR-UP06-IN

Universal Pole Mounting Bracket



Zhejiang Uniview Technologies Co., Ltd.

No. 369, Xietong Road, Xixing Sub-district, Binjiang District, Hangzhou City, 310051, Zhejiang Province, China (Zhejiang) Pilot Free Trade Zone, China

Email: overseasbusiness@uniview.com; globalsupport@uniview.com

<http://www.uniview.com>

©2023-2025 Zhejiang Uniview Technologies Co., Ltd. All rights reserved.

*Product specifications and availability are subject to change without notice.

*Despite our best efforts, technical or typographical errors may exist in this document. Uniview cannot be held responsible for any such errors and reserves the right to change the contents of this document without prior notice.