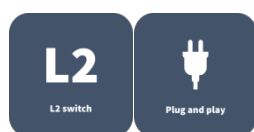


Ethernet PoE Switches Datasheet

SW-2226-LP



Features

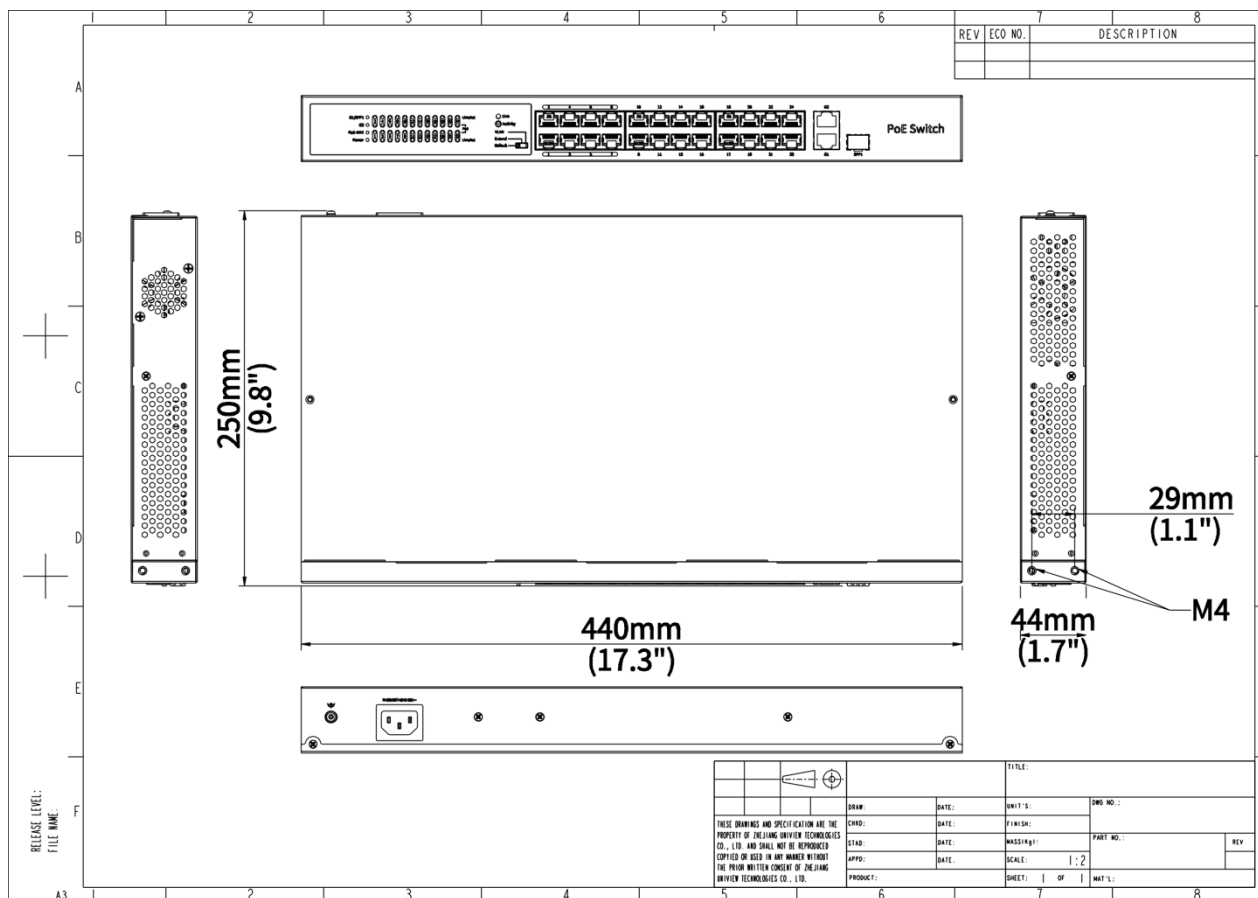
- Multiple working modes to address your business needs: Normal, Secure and Surveillance
- Support port traffic control
- Support for secure mode, all downlink ports can communicate only with uplink ports
- Up to 250m transmission distance on surveillance mode
- Support buffer optimization
- All metal housing, safe and reliable

Specifications

Model	SW-2226-LP
Hardware Specification	
Ports Type	24×100Mbps PoE ports (RJ45)+ 1×1000Mbps GigaEthernet ports +1×1000Mbps Combo ports
Switching capacity	8.8 Gbps
Power Supply	AC: 100 to 240V, 50/60Hz
Forwarding performance	6.55Mpps
MAC	16K
PoE Standard	IEEE 802.3af, IEEE 802.3 at
Packet Buffer	4 M bit
PoE Mode	ModeB (4578)
Max.PoE Power	Max capacity:250W

	Max capacity for single port: 30W
Prior Ports	1 to 8
Standards	IEEE802.3, IEEE802.3u, IEEE802.3az, IEEE802.3x, IEEE802.3af, IEEE802.3at
Cooling Fans	0
Max.Power	270W
Operating Temperature	0°C to 45°C (32°F to 113°F)
Operating Humidity	10% to 90% (noncondensing)
Indicator	<p>POWER:</p> <p>Steady on: AC input is normal</p> <p>Off: No AC input</p> <p>PoE:</p> <p>Off: No PoE power supply</p> <p>Steady on: PoE power supply is normal</p> <p>PoE-MAX:</p> <p>off : The POE power supply power of the whole machine is less than 80% of the specification</p> <p>Steady on : The POE power supply power of the whole machine is greater than 85% of the specification</p> <p>LINK/ACT:</p> <p>Off: No link</p> <p>Steady on: Linked</p> <p>Flashing: Transmitting data</p>
Dimensions (W×D×H)	440 × 189.8 × 44 mm
Weight	2.15KG
Working Mode	Default (Normal mode) : All ports can communicate with each other, EXTEND (Surveillance mode): Transmission distance up to 250 meters
Compliance	
NDAA Compliant	Support

Dimensions



Zhejiang Uniview Technologies Co., Ltd.



<http://www.uniview.com>



overseasbusiness@uniview.com; globalsupport@uniview.com



No. 369, Xietong Road, Xixing Sub-district, Binjiang District, Hangzhou City, 310051, Zhejiang Province, China



©2023-2025 Zhejiang Uniview Technologies Co., Ltd. All rights reserved.

*Product specifications and availability are subject to change without notice.

*Despite our best efforts, technical or typographical errors may exist in this document.

Uniview cannot be held responsible for any such errors and reserves the right to change the contents of this document without prior notice.