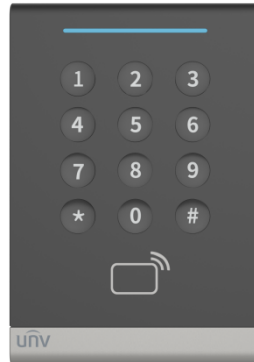


Wall Mount Mifare Card Reader with Keypad

OEC-R3H-MK



Overview

OEC-R3H-MK is a contactless RF IC card reader with a keypad. It features high receiving sensitivity and low working current, applicable to scenarios such as access control, attendance, etc.

Features

- Support Wiegand/RS485 data output.
- Built-in buzzer.
- Supports indoor and outdoor application.
- Stable, sensitive, and responsive.
- Supports ISO 14443-A and ISO 14443-B protocols.

Specifications

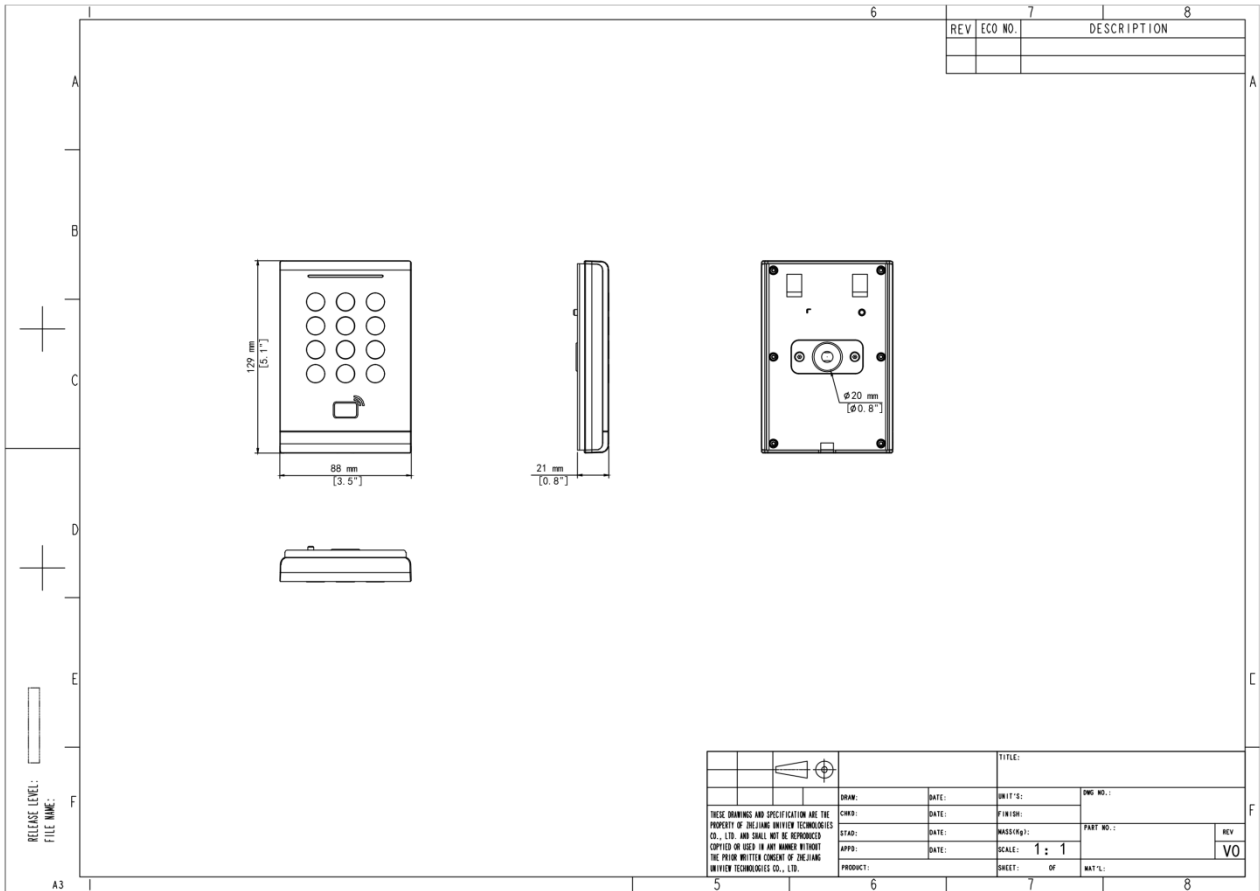
Model	OEC-R3H-MK
Hardware Specification	
Operating Frequency	13.56MHz
Interface	Wiegand 26/34, RS485
Material	PC

Dimensions (L x W x H)	129*88*21mm
Weight	145g
Mount Method	115*73mm junction box, 86*86mm junction box
Operating Temperature	-30°C to 65°C
Operating Humidity	10% to 90%
Storage Temperature	-40°C to 65°C
Indicator	Steady blue: Normal operation; Steady green for 1s: Card authentication succeeded; Steady red for 1s: Card authentication failed
Power Consumption	0.864W
Operating Voltage	DC 12V ± 25%
Operating Current	72mA
Reading Distance	IC card: max. 5cm
Authentication Mode	Card, password
Protection Level	IP65
Basic Business	
Reading Time	< 1s
Card Type	Mifare card

Ordering Info

Product Model	Description
OEC-R3H-MK	Wall Mounted Mifare Keyboard Card Reader

Dimensions



Zhejiang Uniview Technologies Co., Ltd.

No. 369, Xietong Road, Xixing Sub-district, Binjiang District, Hangzhou City, 310051, Zhejiang Province, China

Email: overseasbusiness@uniview.com; globalsupport@uniview.com

<http://www.uniview.com>

©2023-2025 Zhejiang Uniview Technologies Co., Ltd. All rights reserved.

*Product specifications and availability are subject to change without notice.

*Despite our best efforts, technical or typographical errors may exist in this document. Uniview cannot be held responsible for any such errors and reserves the right to change the contents of this document without prior notice.