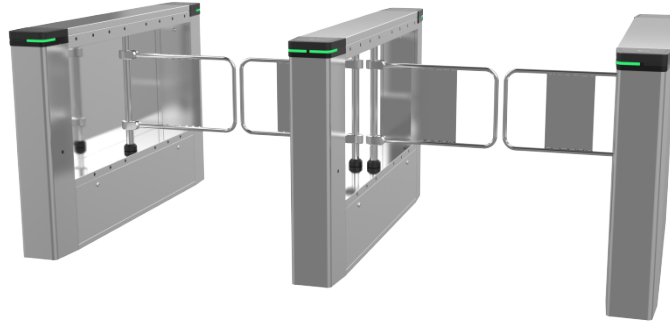


OFG8501 Swing Barrier

OFG8501



Overview

OFG8501 swing barrier is designed for smart access control. It can work with UNV smart terminals to perfectly integrate UNV smart technology into barrier gates to achieve precise access control and resolve issues plaguing traditional barrier gates such as illegal access using credentials of authorized persons. It supports multiple door opening modes such as authentication (QR code, IC card), induction, and normally open. This product is made of austenitic stainless steel; has a simple and elegant design; adopts advanced movement production technology to ensure long-term stable operation; and can be widely used in transportation, parks, universities, justice, energy, medical care and other industries.

Features

- Powerful and stable control core
- Advanced movement structure and high-quality brushless DC motor realize precise control, stable operation and long lifetime.
- Cutting-edge motor control technology, which integrates closed-loop control system, DSP-based intelligent motor control system, and self-developed motor control algorithm to achieve precise control and positioning of barriers with stable performance.
- All-round security design
- Ensures safety by triple intelligent anti-pinch technologies: IR detection, impact detection, and current detection.
- Safety voltage below 24V prevents electric shock.
- The barrier can remain open to allow unobstructed access in case of emergency.
- The barrier is unlocked in case of power failure to allow unobstructed access.
- Allows flexible selection of normally open or normally closed and adjustment of barrier opening/closing speed to suit various scenarios.
- Full-fledged IR light curtains
- 16 pairs of IR light curtains with matrix cycle scanning control improve detection accuracy.
- Sensitive detects illegal access such as reverse access and tailgating (with a tailgating accuracy of 2cm) and triggers alarms through sound, light, etc.

- Alarms can be uploaded to the back-end management system through the serial port, and can be linked with other security systems.
- Easy to install and maintain
- Easy installation with only 3 cables.
- Automatically detects malfunctions and triggers alarms for user-friendly maintenance and use.
- Other features
- Supports device configuration such as working mode, control mode, and door opening time on the control panel using numeric keys.
- Simple and convenient full-digital adjustment.
- Multiple I/O interfaces for various external devices.
- Supports device maintenance via network including troubleshooting, event management, passing mode configuration, and movement control.
- Supports people counting by IR detection and data uploading to the management platform for statistics.
- Supports detecting events such as tailgating, reverse access and intrusion and triggering alarms, and reporting the alarm records to the management platform.

Specifications

M	OFG850	OFG850	OFG850	OFG850	OFG850	OFG850	OFG850	OFG850	OFG850	OFG850	OFG850	OFG850
od	1-R-YS6	1-M-YS	1-L-YS6	1-R-YS7	1-M-YS	1-L-YS7	1-M-YS	1-L-YS9	1-R-YS9	1-R-YS1	1-M-YS	1-L-YS1
el	5-A	65-A	5-A	5-A	75-A	5-A	95-A	5-A	5-A	05-A	105-A	05-A
Hardware Specification												
M ot or	Brushless DC motor											
Th e nu m be r of ho les	L: 1; M: 2; R: 1											
La ne wi dt h	650-1050mm (The specific width is subject to the model number)											

Ba rri er m at eri al	Stainless steel pipe
IR de te ct or	16 pairs
Di m en sio ns (L × W ×H)	1500mm*190mm*960mm
Pe de st al m at eri al	Wall thickness 1.2mm, top cover 1.5mm, 304brushed stainless steel
Po we r su pp ly	220V input; 24VDC/3A, 12VDC/7A output
IO	Smart terminal*2+remote control*2+fire*2+linkage*2 +door opening button*2
Vo ice	Built-in amplifier and speaker

In di ca tor co lor	Red/green
Al ar m m od e	Audible and visual alarm
Re tro gr ad e m oti on de te cti on	Reverse break-in detection
Physical	
W ei gh t	L: 50KG M: 56.9KG R: 51.85KG
Mechanical	
Int erf ac e	RS485×1, RS232×1, network interface, CAN
Specification index	
Cl osi ng ac cu ra cy	≤1°

Anti-pinch detection	Anti-pinch by IR detection, impact detection, and current detection
Throughput	30 to 60 people per minute, depending on the foot traffic and passing mode
Operating environment	Operating humidity: < 95%, non-condensing; operating temperature: -20°C to 60°C; outdoor shade
Power consumption	Standby: 30W, operating: 50W
MCBF	6 million times
Fire alarm linkage	Automatic door opening for unobstructed access in case of power failure.

Ordering Info

Product Model	Description
OFG8501-L-YS65-A	Swing Speed Gate(Left Side Machine)
OFG8501-L-YS75-A	Swing Speed Gate(Left Side Machine)
OFG8501-L-YS95-A	Swing Speed Gate(Left Side Machine)
OFG8501-M-YS65-A	Swing Speed Gate(Intermediate Machine)
OFG8501-M-YS75-A	Swing Speed Gate(Intermediate Machine)
OFG8501-M-YS95-A	Swing Speed Gate(Intermediate Machine)
OFG8501-R-YS65-A	Swing Speed Gate(Right Side Machine)
OFG8501-R-YS75-A	Swing Speed Gate(Right Side Machine)
OFG8501-R-YS95-A	Swing Speed Gate(Right Side Machine)
OFG8501-L-YS105-A	Swing Speed Gate(Left Side Machine)
OFG8501-M-YS105-A	Swing Speed Gate(Intermediate Machine)
OFG8501-R-YS105-A	Swing Speed Gate(Right Side Machine)

Accessories

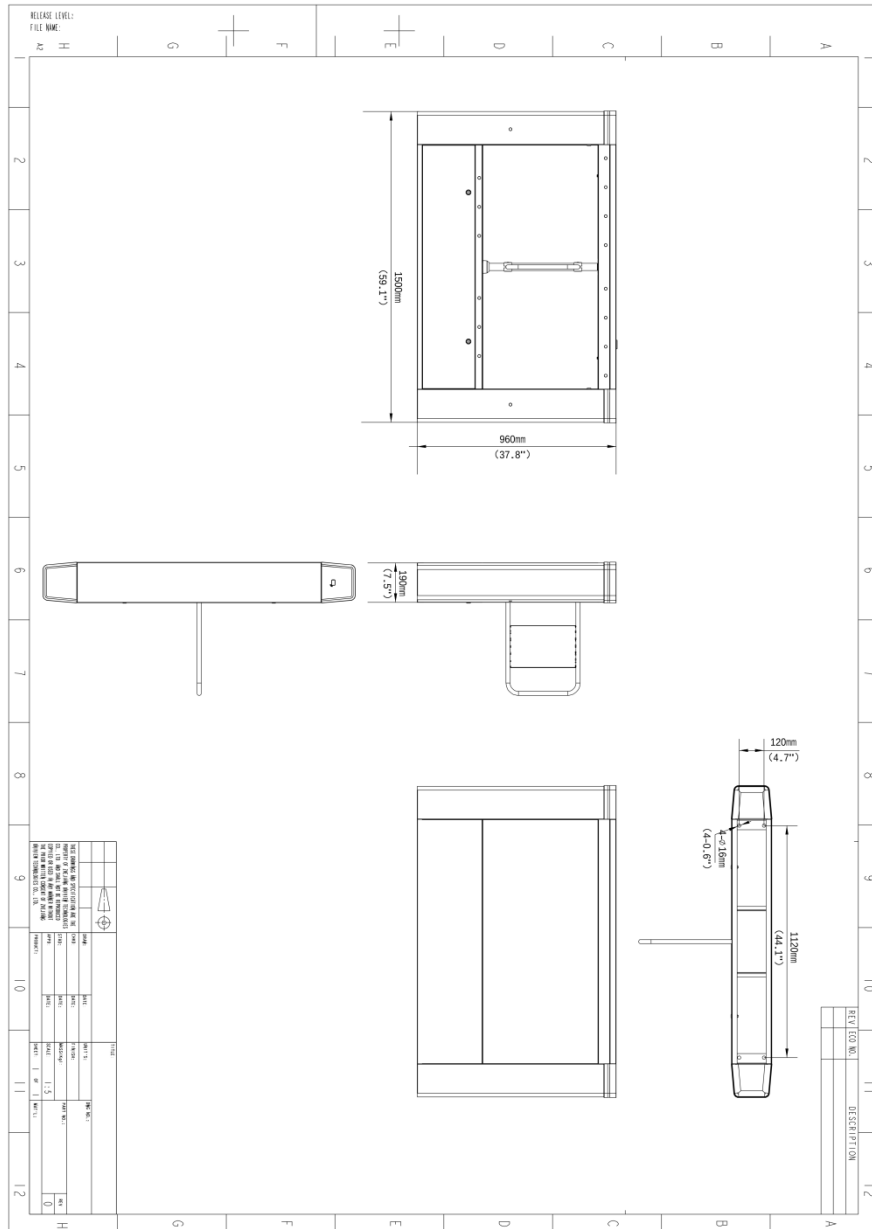
OEC-R3H-M

Wall Mounted Mifare Card Reader



Dimensions

Aggregate product size diagram using OFG8501-R-YS65-A as an example



Zhejiang Uniview Technologies Co., Ltd.

No. 369, Xietong Road, Xixing Sub-district, Binjiang District, Hangzhou City, 310051, Zhejiang Province, China

Email: overseasbusiness@uniview.com; globalsupport@uniview.com

<http://www.uniview.com>

©2023-2025 Zhejiang Uniview Technologies Co., Ltd. All rights reserved.

*Product specifications and availability are subject to change without notice.

*Despite our best efforts, technical or typographical errors may exist in this document. Uniview cannot be held responsible for any such errors and reserves the right to change the contents of this document without prior notice.